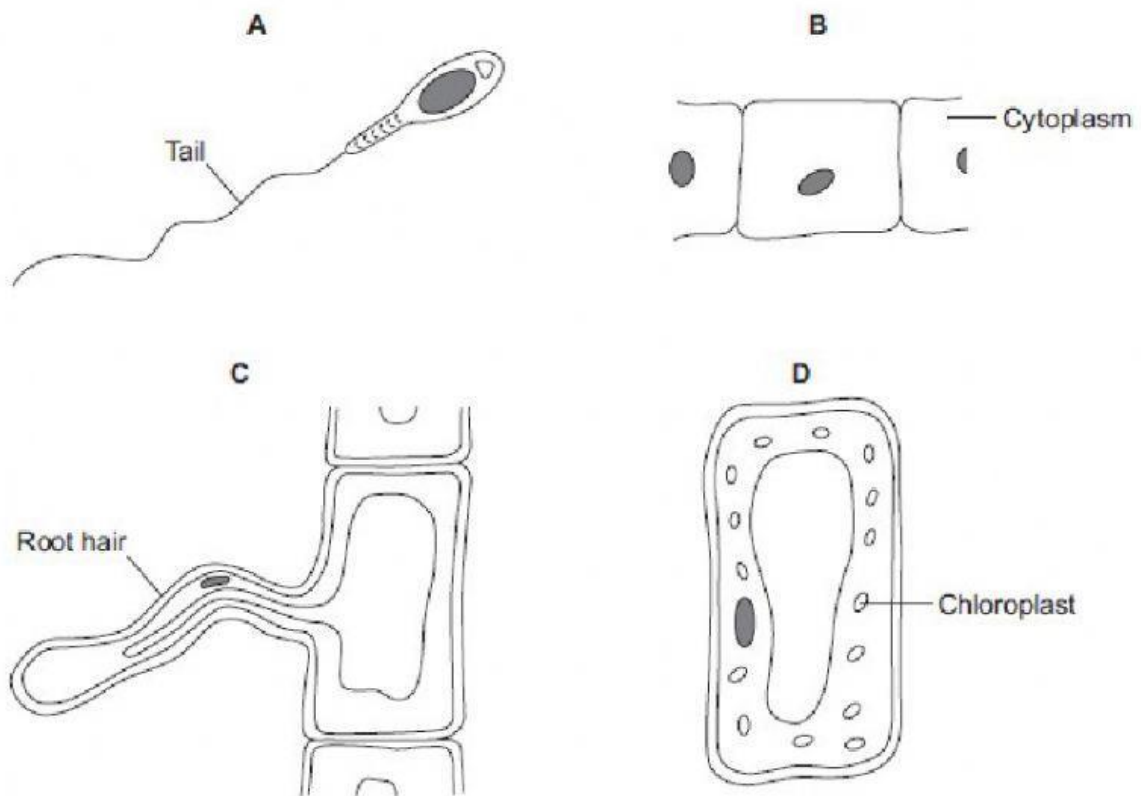


Q5. The diagrams show four types of cell, **A**, **B**, **C** and **D**.
Two of the cells are plant cells and two are animal cells.



(a) (i) Which **two** of the cells are plant cells?

Tick (✓) **one** box.

A and B

☐

A and D

☐

C and D

☐

(1)

(ii) Give **one** reason for your answer.

(1)

(b) (i) Which cell, **A**, **B**, **C** or **D**, is adapted for swimming?

☐

(1)

(ii) Which cell, **A**, **B**, **C** or **D**, can produce glucose by photosynthesis?

(1)

(c) Cells **A**, **B**, **C** and **D** all use oxygen.

For what process do cells use oxygen?

Draw a ring around **one** answer.

osmosis

photosynthesis

respiration

(1)

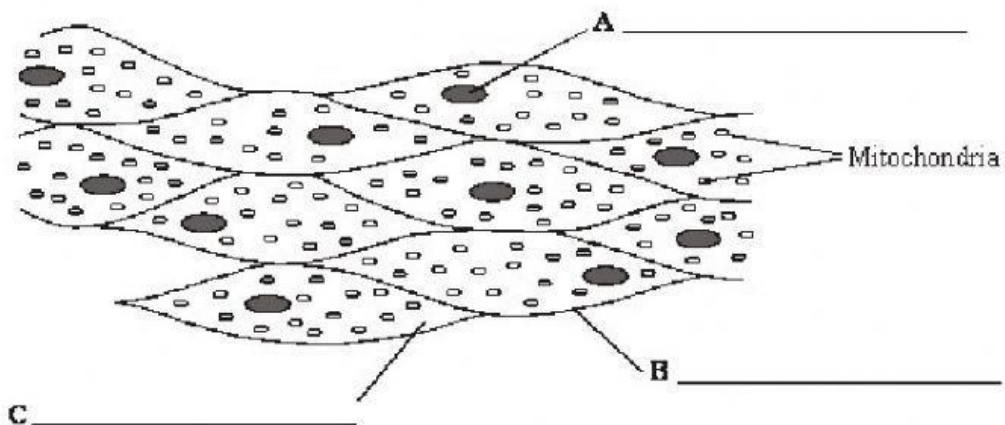
(Total 5 marks)

Q6. Water travels through plants in xylem tissue.

(a) Describe the structure of xylem tissue.

(2)

Q7. The diagram shows a group of muscle cells from the wall of the intestine.



(a) On the diagram, use words from the box to name the structures labelled **A**, **B** and **C**.

cell membrane

cell wall

chloroplast

cytoplasm

nucleus

(3)

(b) How are these muscle cells adapted to release a lot of energy?
