

UNIDAD EDUCATIVA INDOAMÉRICA
VICERRECTORADO
AÑO LECTIVO 2021-2022
INSTRUMENTO DE EVALUACIÓN
QUIMESTRAL EVALUATION

VREA-02-04

INFORMATIVE DATA:

STUDENT'S NAME: _____

SUBJECT: _____

ÁREA: Lengua extranjera

LEVEL / SUBLEVEL: EGB / Elemental CLASS: _____ PARALLEL: _____

DATE: _____

TEACHER: Lic. Nataly Mesias

INSTRUCTIONS:

1. Before answering, read each question carefully.
2. Blots, cross outs or o amendments (use of liquid paper) void the question.
3. The time available for the test is 60 minutes.
4. Use blue pen (non-erasable) to answer all questions.
5. Remember: academic dishonesty will be penalized according to articles 223, 224, 330 and 331 of the LOEI Regulations stipulated in the Institutional Academic Honor Code.

REFERENCE:

Art. 186 of the LOEI Regulation Types of evaluation (Summative evaluation)

QUESTIONNAIRE

A. SORTING

LIVING BEINGS: I.CN.2.2.1. Classify animals into vertebrates and invertebrates, based on the presence or absence of the vertebral column and its external characteristics (body parts, body cover, size, way of moving, feeding). In turn, group vertebrates according to their characteristics.

SKILL: CN.2.1.4. Observe and describe the characteristics of animals and classify them into vertebrates and invertebrates, by the presence or absence of a backbone.

INSTRUCTIONS: Classify the following animals as **vertebrates** or **invertebrates**.



Vertebrates

Invertebrates

.....

.....

.....

.....

.....

.....

.....

.....

.....

.....

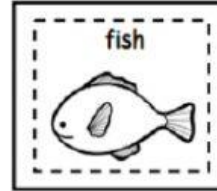
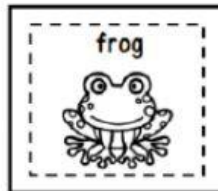
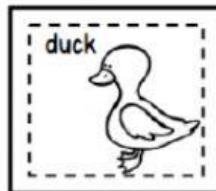
B. LAVELLING

LIVING BEINGS: I.CN.2.2.1. Classify animals into vertebrates and invertebrates, based on the presence or absence of the vertebral column and its external characteristics (body parts, body cover, size, way of moving, feeding). In turn, group vertebrates according to their characteristics.

SKILL: CN.2.1.4. Observe and describe the characteristics of animals and classify them into vertebrates and invertebrates, by the presence or absence of a backbone.

INSTRUCTIONS: Write the **group of vertebrates** to which each of the following animals belong.

Mammal – Amphibian – Reptile – Bird - Fish



C. LABELLING

LIVING BEINGS: I.CN.2.2.1. Classify animals into vertebrates and invertebrates, based on the presence or absence of the vertebral column and its external characteristics (body parts, body cover, size, way of moving, feeding). In turn, group vertebrates according to their characteristics.

SKILL: CN.2.1.4. Observe and describe the characteristics of animals and classify them into vertebrates and invertebrates, by the presence or absence of a backbone.

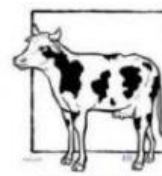
INSTRUCTIONS: Look at the following animals and classify them as **herbivorous, carnivorous, or omnivorous**.



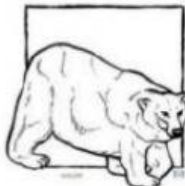
a. _____



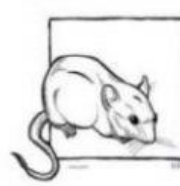
b. _____



c. _____



d. _____



e. _____

D. MULTIPLE CHOICE

LIVING BEINGS: I.CN.2.1.1. Explain the life cycle of humans, plants, and animals (Insects, fish, reptiles, birds, and mammals), from the identification of the changes that occur in their stages and importance.

SKILL: CN.2.1.2. Observe and identify changes in the life cycle of different animals (insects, fish, reptiles, birds, and mammals) and compare them with changes in the human life cycle.

INSTRUCTIONS: Read the information about **classification of animals based on birth** and **fill in the blanks** with the correct word or phrases.

their mother's womb

viviparous

oviparous

eggs

animals are born from
 Birds, fish and most reptiles are
oviparous.



animals are born from
 and drink their mother's
milk. Almost all mammals and some reptiles
are viviparous.

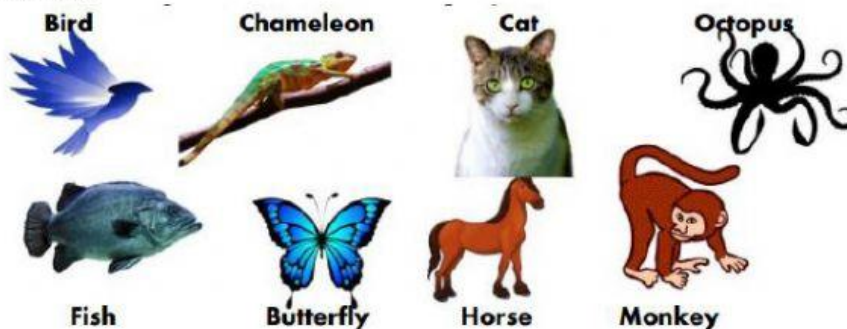


E. MATCHING

LIVING BEINGS: I.CN.2.2.1. Classify animals into vertebrates and invertebrates, based on the presence or absence of the vertebral column and its external characteristics (body parts, body cover, size, way of moving, feeding). In turn, group vertebrates according to their characteristics.

SKILL: CN.2.1.2. Observe and identify changes in the life cycle of different animals (insects, fish, reptiles, birds, and mammals) and compare them with changes in the human life cycle.

INSTRUCTIONS: Look at the following **animals** and classify them according to their **habitats**.



Terrestrial	Aquatic
_____	_____
_____	_____
Aerial	Arboreal
_____	_____
_____	_____

A. TRUE / FALSE

LIVING BEINGS: I.CN.2.2.1. Classify animals into vertebrates and invertebrates, based on the presence or absence of the vertebral column and its external characteristics (body parts, body cover, size, way of moving, feeding). In turn, group vertebrates according to their characteristics.

SKILL: CN.2.1.4. Observe and describe the characteristics of animals and classify them into vertebrates and invertebrates, by the presence or absence of a backbone.

INSTRUCTIONS: Read the following statements about the **classification of animals based on nature** and choose **T** if the sentence is **true** or **F** if the sentence is **false**.

- Wild animals live in a house. ☐
- Domestic animals survive in the wild. ☐
- Wild animals eat cookies. ☐
- Domestic animals live near people. ☐