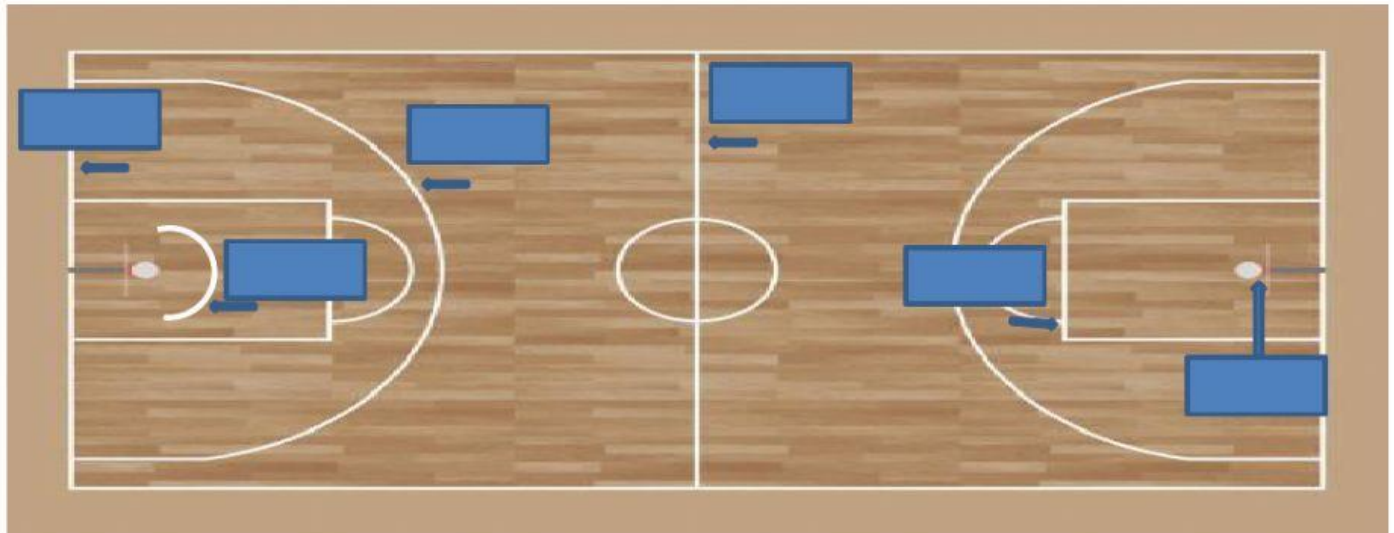


1) Drag the name of the lines to the correct place in the picture

END LINE : HALF-COURT LINE : BACKBOARD : KEY AREA ARC  
FREE-THROW LINE : 3 POINT LINE



2) Choose the correct option to complete the sentences.

- a) Basketball is played in a
- b) The touch-line is                      meters long.
- c) The en-line is                      meters long.
- d) The half-court line is at                      meters from the end-line
- e) The free- throw line is at                      meters from the backboard
- f) The center circle diameter is                      meters

3) Basketball equipment: Match the pictures and their names.



Hoop



Whistle



Net



Backboard



High-tops/sneakers/ trainers

Ankle brace

