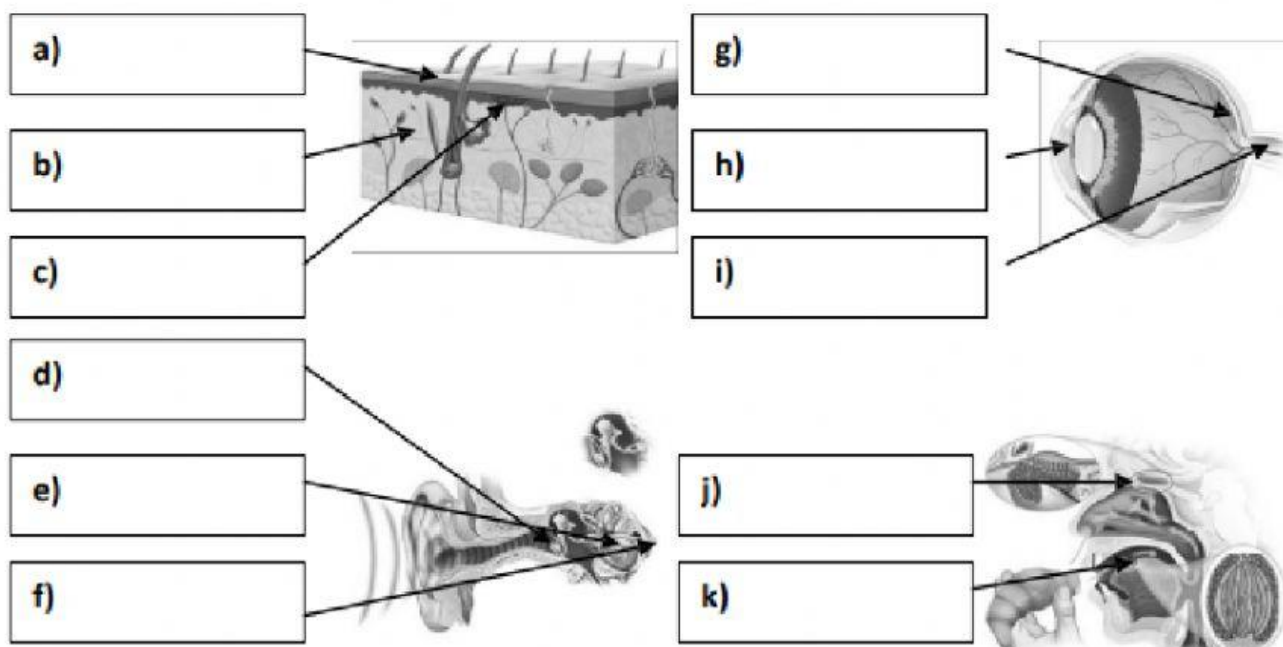


**1. Choose the correct word.**

- a) The brain is the most important organ of the *nervous / interactive* system.
- b) The brain gets information from the *sensory / selective* nerves.
- c) Then the brain sends information to the *mechanical / motor* nerves.
- d) Nerve cells use *involuntary / electrical* impulses to transmit messages.
- e) A nerve cell is *star-shaped / oval*, with a long extension called an axon.
- f) The axon *sends / receives* nerve impulses to the dendrites of other nerve cells.

**2. Label the diagrams.**



**3. Complete these sentences:**

- a) The \_\_\_\_\_ is the exterior part of your skin.
- b) The axon is a long extension of a neuron that transmits \_\_\_\_\_.
- c) A neuron is a star-shaped cell that sends and \_\_\_\_\_ messages.
- d) The dermis is the layer of your skin where the \_\_\_\_\_ are found.
- e) A synapse is the space between two \_\_\_\_\_.
- f) Nerve \_\_\_\_\_ are electrical signals created by a neuron that transmit messages.
- g) \_\_\_\_\_ are short, thin fibres of a neuron that receive nerve impulses.