

## Grade 4 Year's End Review

**Directions:** Use your notes and you knowledge to help answer the questions.

1. What do all vertebrates have one thing in common?
2. Which of the following is not included in the vertebrate group?

**fish      mammals      mollusks      reptiles      amphibians      birds**

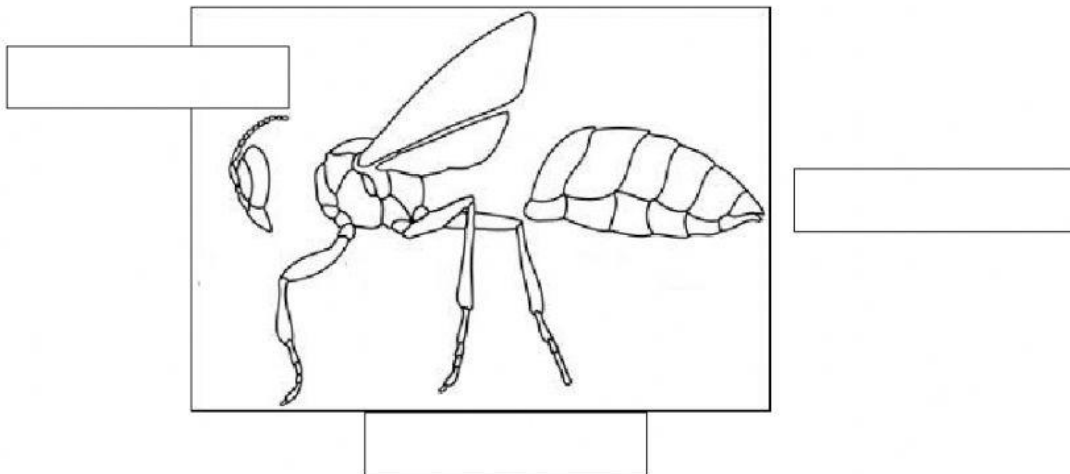
3. Most invertebrates have \_\_\_\_\_ this is a hard outer covering that protects an animal's body and gives it support.

4. Which will not be part of the invertebrate group?

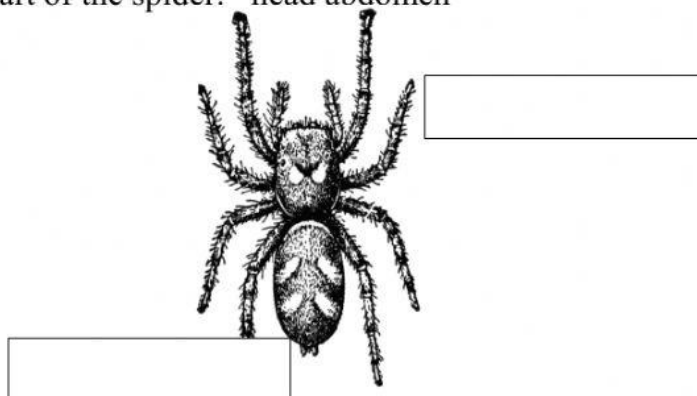
**insects      mammal      spiders      mollusks      sponges      spiny-skinned      worms**

5. Insects and spiders are invertebrates that belong to the group called \_\_\_\_\_

6. Label the parts of the insect. **thorax      head      abdomen**

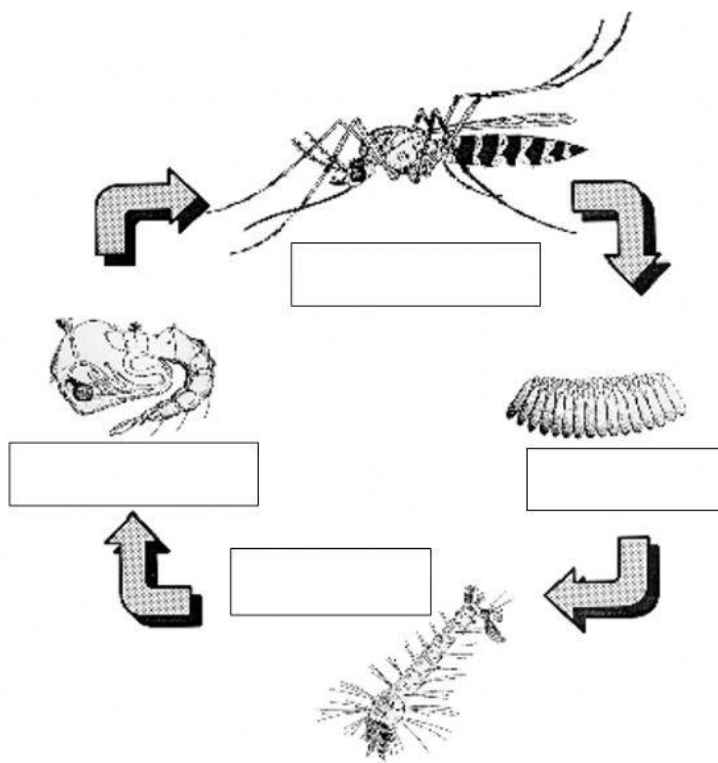


7. Label the part of the spider: **head      abdomen**

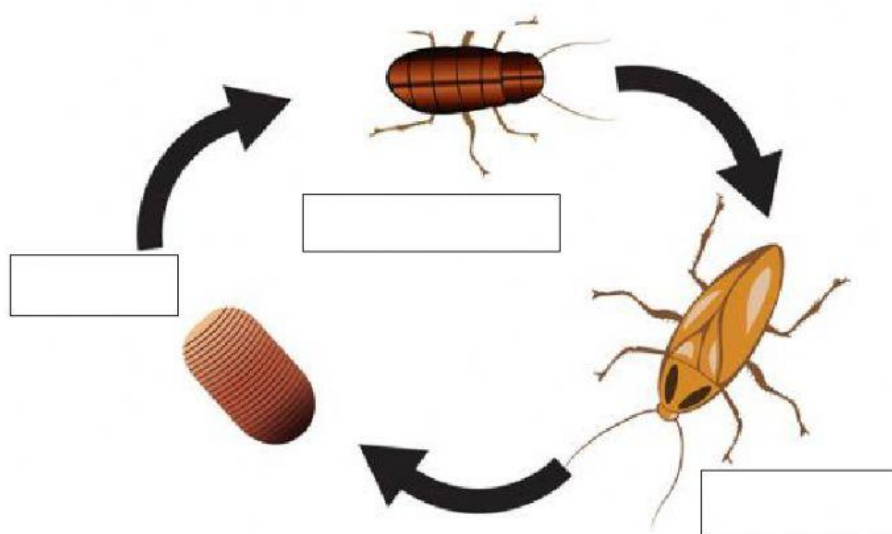


8. A life cycle is : \_\_\_\_\_

9. Label the life cycle of the mosquito: **egg, larva, nymph and adult.**



10. Label the life cycles the cockroach: **egg, nymph, and adult.**



11. \_\_\_\_\_ is a body part, **behaviour**, **covering** or an **action** that helps an animal to survive in its environment

12. \_\_\_\_\_ is an adaptation in which an animal looks or sounds like another animal.

13. \_\_\_\_\_ is an animal's colour, shape or pattern that helps it blend in with its environment.

14. Complete the sentences of the respiratory system.

Air enters the body through the \_\_\_\_\_ or mouth and goes down the \_\_\_\_\_ into the \_\_\_\_\_ get \_\_\_\_\_ and gives off \_\_\_\_\_

15. Use the letters to write next to the correct parts of the respiratory system.

Nasal passage \_\_\_\_\_

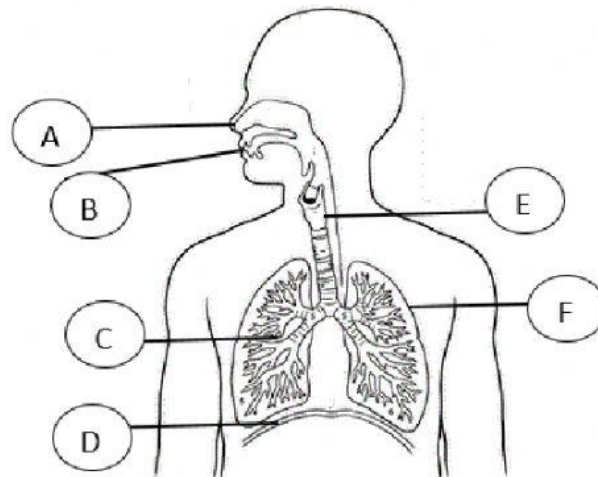
Mouth \_\_\_\_\_

Trachea \_\_\_\_\_

Lung \_\_\_\_\_

Diaphragm \_\_\_\_\_

Alveoli \_\_\_\_\_



16. Write the letters next to the correct part of the nervous system.

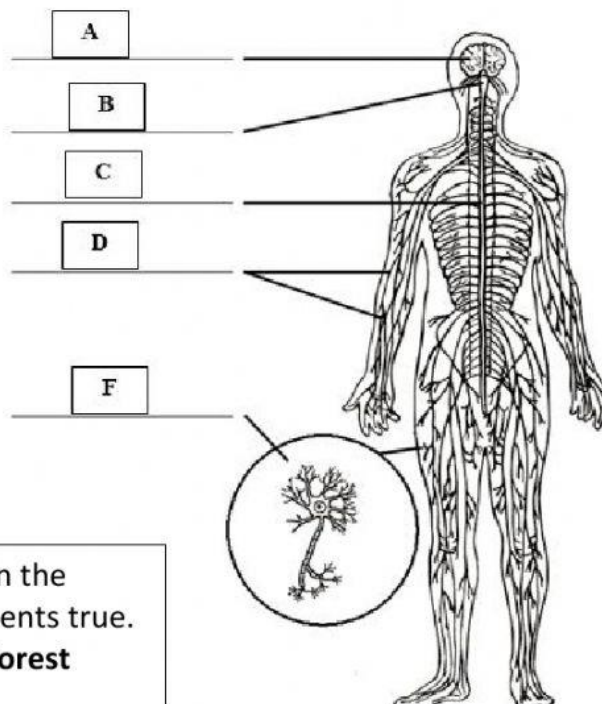
brain \_\_\_\_\_

spinal cord \_\_\_\_\_

nerves \_\_\_\_\_

brain stem \_\_\_\_\_

nerve cells \_\_\_\_\_



Use the words and write them in the blank space to make the statements true.

**Coral reef ecosystem pine forest**

17. An \_\_\_\_\_ is a place where living things and nonliving things interact.

\_\_\_\_\_ provide protection from storms by breaking up the force of the waves before they reach the shoreline.

19. A \_\_\_\_\_ is an area in which the main plants are trees.