

Test 2

Listening

Part I

- 5 questions -

Listen and draw lines. There is one example.

Alex

May

Sally

Fred



Pat

Jack

Peter

Listening

Part 2 - 5 questions -

Listen and write. There is one example.



LAKE TOWN SPORTS CENTRE

He goes to the sports centre: every Saturday

1 His name: Peter

2 His age:

3 Sport he wants to play:

4 He needs this to play: a

5 Mrs River is: his

Listening

Part 3

- 5 questions -

Jill is telling her mum about a 'Show and Tell' lesson she had at school today and things her classmates brought to class. What did each child bring to class?

Listen and write a letter in each box. There is one example.



Alex



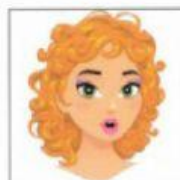
Vicky



Fred



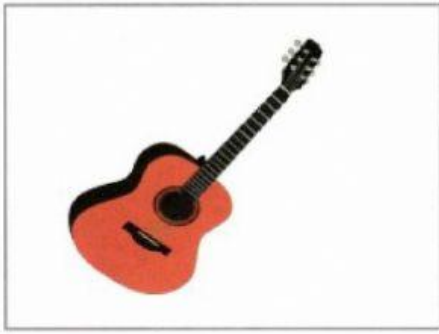
Jill



Anna



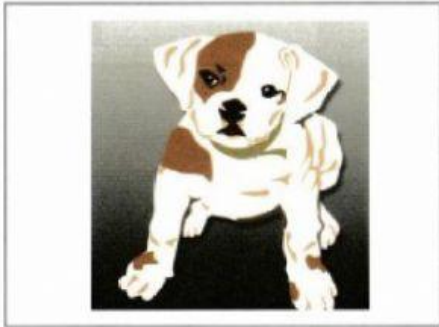
Sally



A



B



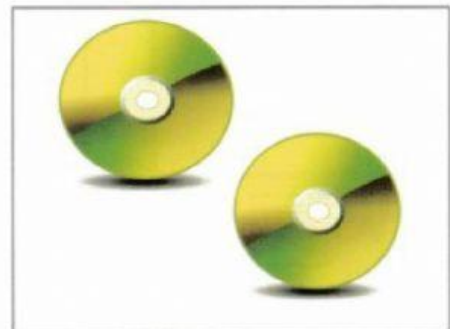
C



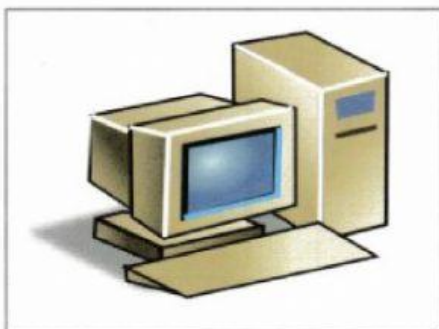
D



E



F



G



H

Listening

Part 4

- 5 questions -

Listen and tick (✓) the box. There is one example.

Which dress does Vicky choose?



A ☐



B ☒



C ☐

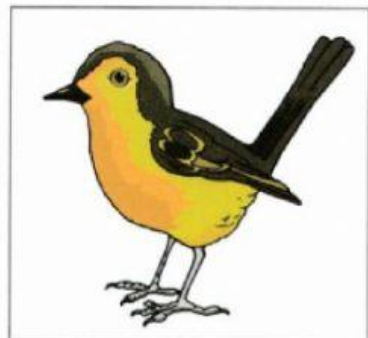
1 What does Nick see in the tree?



A ☐

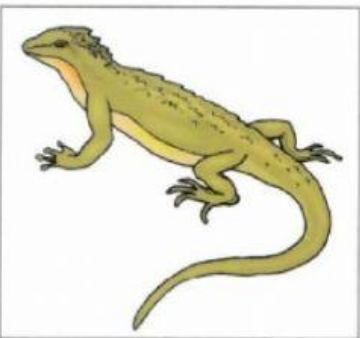


B ☐



C ☐

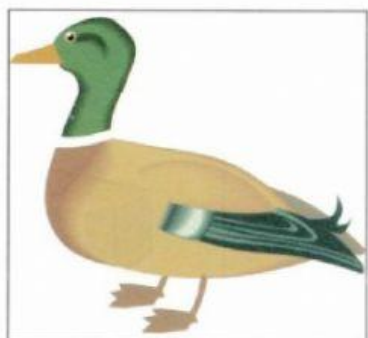
2 What has Miss Daisy got?



A ☐



B ☐



C ☐

3 What does Mary like to do on Saturday afternoon?



A ☐



B ☐

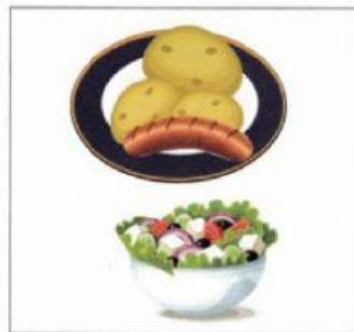


C ☐

4 What is Sam's mum cooking for dinner?



A ☐



B ☐



C ☐

5 What can't Fred find?



A ☐



B ☐



C ☐

Listening

Part 5

- 5 questions -

Listen and colour and write. There is one example.

