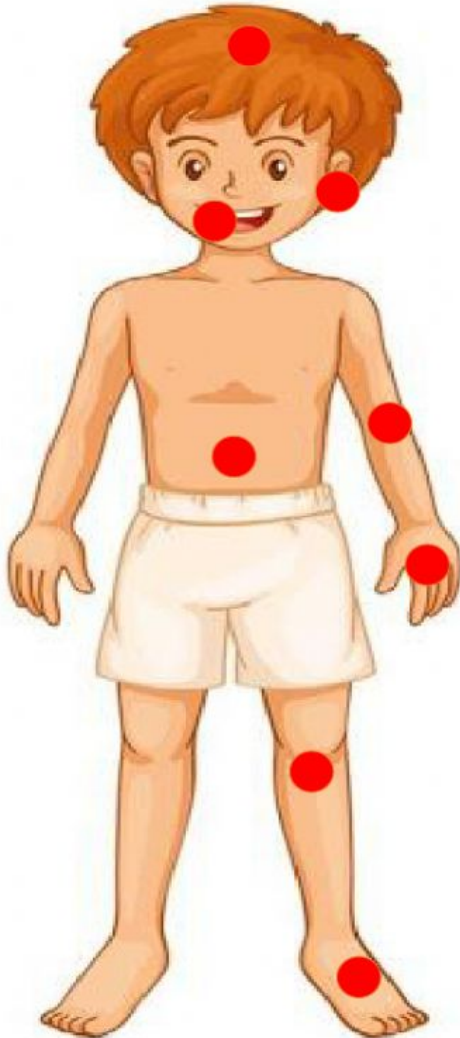


# HEALTH

## 1. MATCH THE BODY PARTS.



● HEAD

EYE ●

● TOOTH

MOUTH ●

● ARM

● STOMACH

NOSE ●

● EAR

● HAND

● FOOT

● LEG

HAIR ●



2. MATCH THE ILLNESS.



COLD ●

● COUGH

STOMACHACHE ●

TEMPERATURE ●

● TOOTHACHE

● HEADACHE

BACKACHE ●

● EARACHE

● RUNNY NOSE

