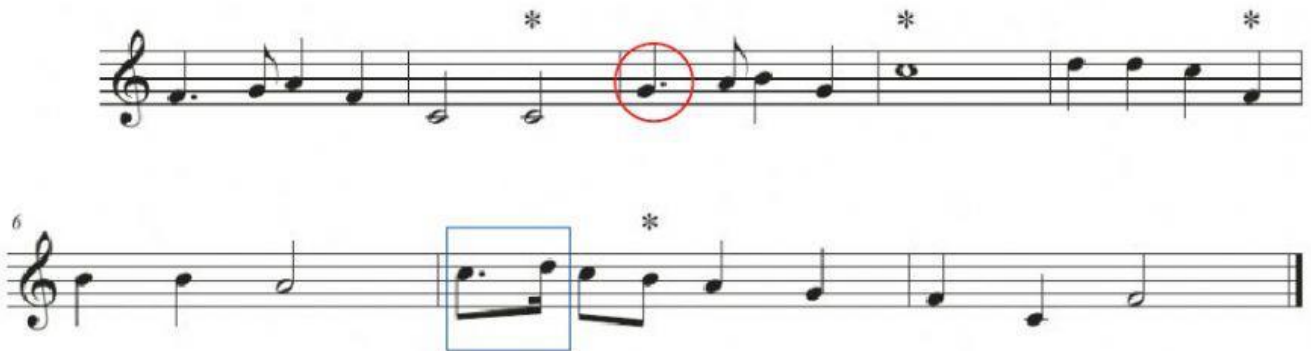


Analysis exercises

Analysis 1



1. How many measures are in the song?
2. How many beats in each measure?
3. What is the longest note value?
4. What is the shortest note value?
5. What clef is used for the song?
6. Write the letter name of the highest note in the song:
7. Write the letter name of the notes marked * in the following measures:

Measure 2

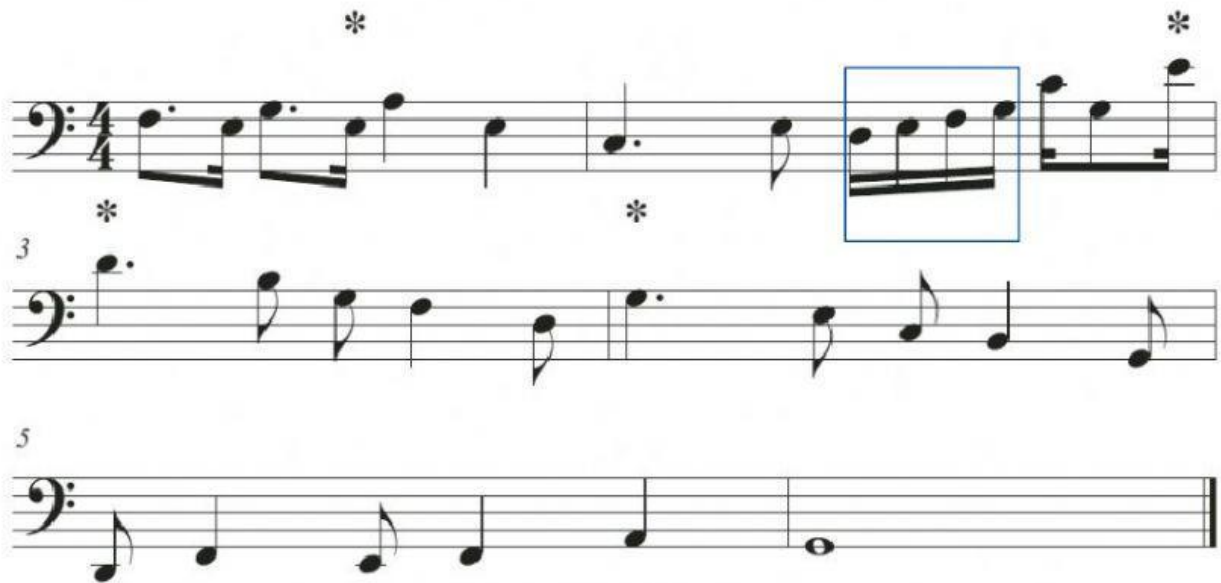
Measure 4

Measure 5

Measure 7

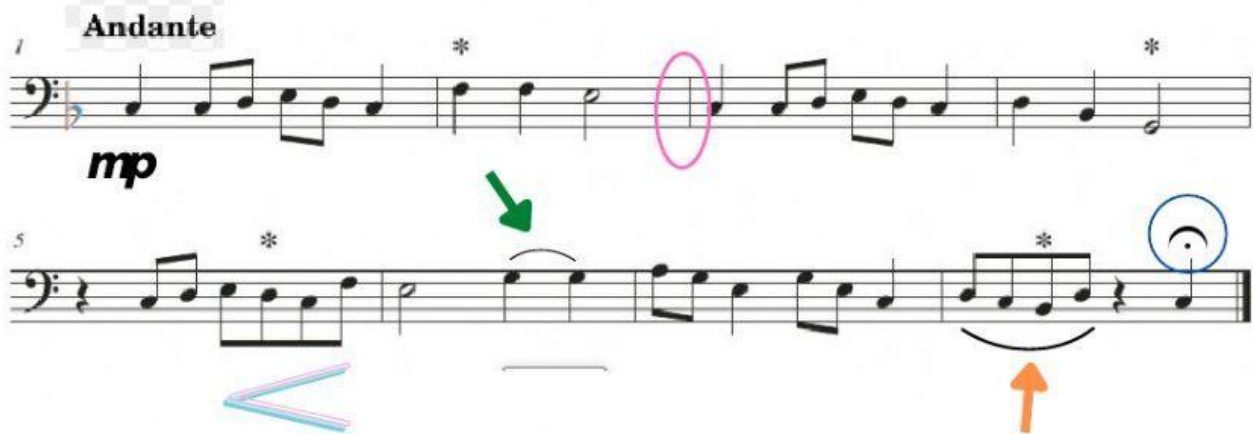
8. How do you call the symbol circled in red?
9. How many beats last the figures in the blue square?

Analysis 2



1. How many measures are in the song?
2. How many beats in each measure?
3. What is the longest note value?
4. What clef is used for the song?
5. Write the letter name of the lowest note in the song:
6. Which measure contains the highest note? Measure
7. Which measure contains the lowest note? Measure
8. Write the letter name of the notes marked * in the following measures:
Measure 1
Measure 2
Measure 3
Measure 4
9. How many beats last the figures in the blue square?

Analysis 3



1. How many measures are in the song?

2. Write the letter name of the notes marked * in the following measures:

Measure 2

Measure 4

Measure 5

Measure 8

3. What's the name of the musical sign indicated with a green arrow?

4. What's the name of the musical sign indicated with an orange arrow?

5. What's the name of the musical sign circled in blue?

6. What's the name of the musical sign in the pink oval?

7. What type of indication is "Andante" in this piece?

8. What's the meaning of *mp*?

9. What does this sign mean?



10. The accidentals at the beginning of the staff are called...