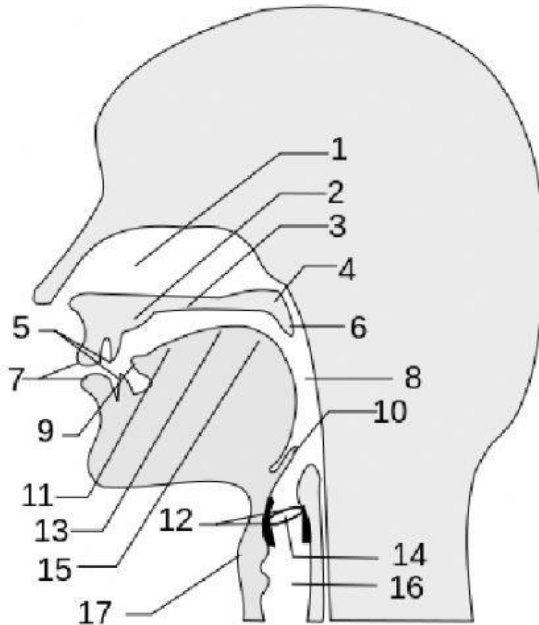


THE VOCAL TRACT

Label the speech organs and resonators. Write all of the names in uppercase letters.



1. .
2. .
3. .
4. .
5. .
6. .
7. .
8. .
9. .
- 10..
- 11..
- 12..
- 13..
- 14..
- 15..
- 16..
- 17..

Match the words and the concepts

LARYNX

LIPS

ARTICULATION

ORAL CAVITY

LUNGS

VOCAL FOLDS

PALATE

VELUM

TONGUE

RESONATORS

They are anatomic intensifiers of the human voice. They can change the quality of a sound.

It's also called soft palate. It controls airflow through the nasal cavity.

It's the most important component of the vocal tract because its size and shape can be varied.

They can assume different positions in the articulation of different vowel sounds: spread, neutral, rounded.

They are two bands of smooth muscle tissue found in the larynx.

It's a rigid structure at the top of the trachea and below the pharynx. It contains the vocal folds.

They expand and contract in inhalation and exhalation.

The production of speech sounds.

It's an active articulator. Its parts are the tip, blade, front, back, root.

It's a concave structure that separates the mouth from the nasal cavity.