

Human reproduction

MATCH THE PICTURES TO THEIR DEFINITION



Female reproductive organ where a fertilized egg develops into a foetus.



Muscular canal that leads from the vulva to the uterus.

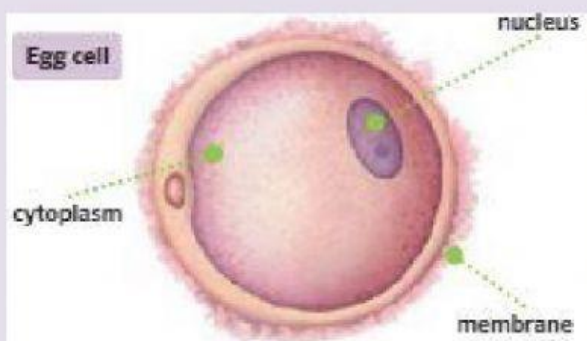


Female reproductive cell, also named ova.



The two female reproductive organs where egg cells are produced.

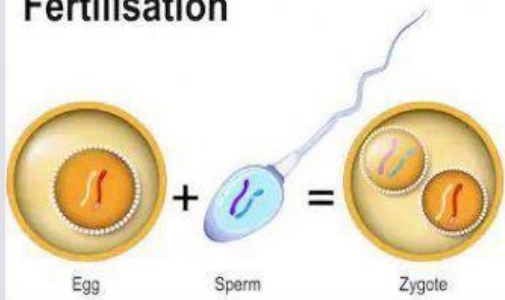
Tubes that connect the ovaries to the uterus. Fertilisation usually occurs here.



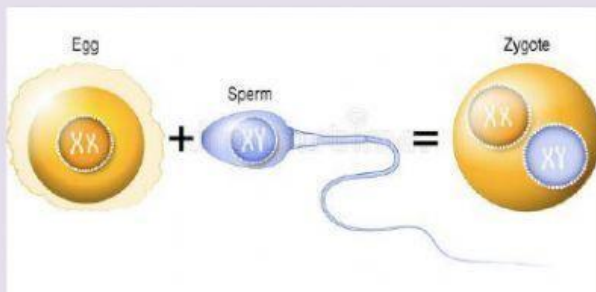


A fertilised egg cell

Fertilisation



Physical and psychological changes we go through to become sexually mature. It's when the secondary sexual characteristics appear.



Male and female reproductive cells.

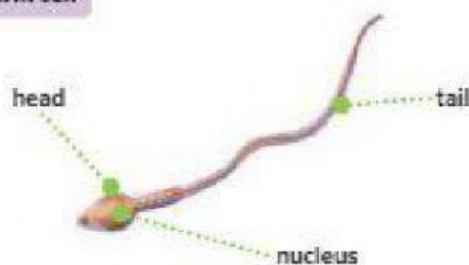


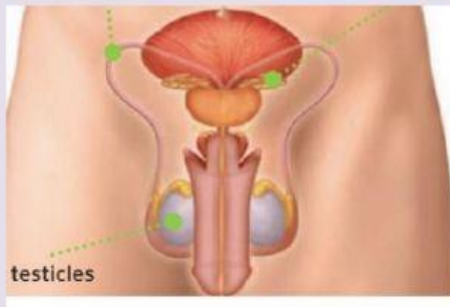
Puberty

Male reproductive cell.

It takes place when a male and female reproductive cells join to form a zygote

Sperm cell

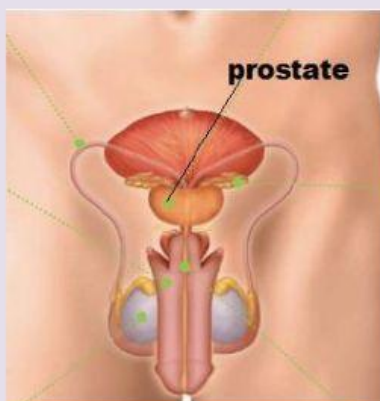




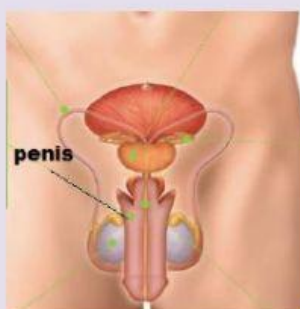
Small glands connected to the vas deference. They produce a liquid that becomes part of the semen which provide sperm cells with nutrients.



Male reproductive organs where sperm cells are produced.



Large gland that produces a white liquid that becomes part of the semen.



Tubes that connect the testicles to the seminal vesicles and the prostate gland .



Male external reproductive organ. It contains the urethra which carries both urine and semen out of the body.