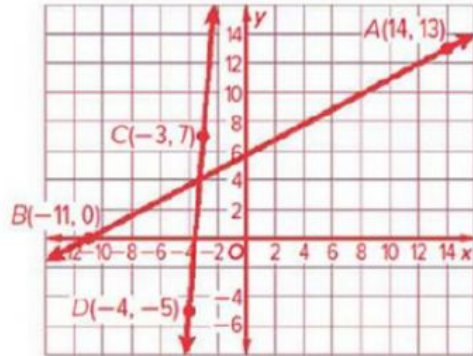


## Grade 9A2-Group C

### Check

Determine whether  $\overleftrightarrow{AB}$  and  $\overleftrightarrow{CD}$  are parallel, perpendicular, or neither for  $A(14, 13)$ ,  $B(-11, 0)$ ,  $C(-3, 7)$ , and  $D(-4, -5)$ . Graph each line to verify your answer.



Hint: 1- find the slope of the two lines

2- if the lines parallel the slope of two lines will be equal

3- if the lines perpendicular then the product of two slopes will be -1

4- other than that its neither