

THE FEMALE REPRODUCTIVE SYSTEM

1. Label the organs. Write the following words in the correct place (Write them in capital letters)

FALLOPIAN TUBES

VAGINA

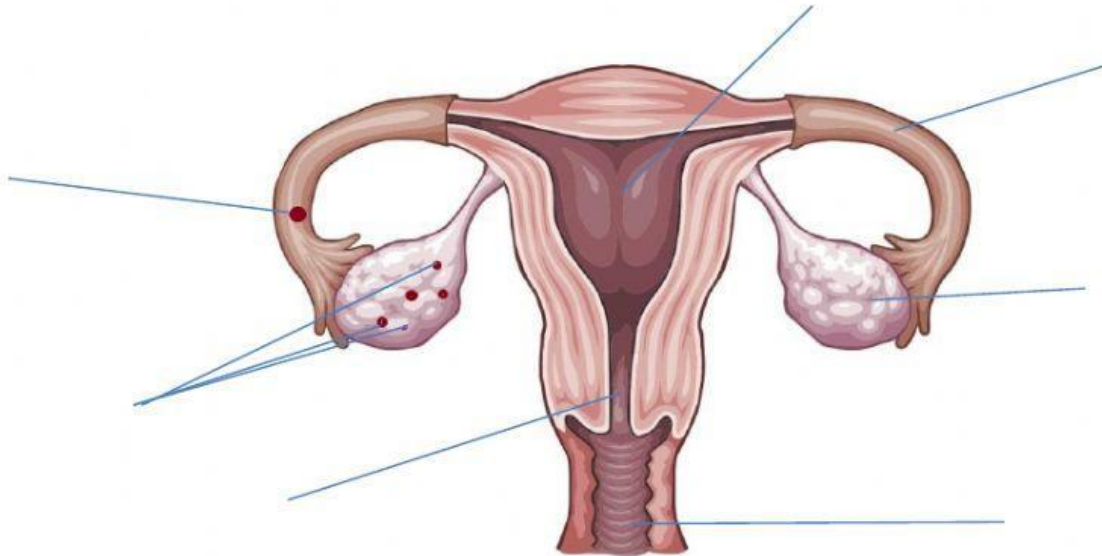
UTERUS

OVUM

OVARIES

OVA

CERVIX



2. Label the organs. Write the following words in the correct place. Some organs belong to the urinary system (Write them in capital letters).

VAGINA

UTERUS

FALLOPIAN TUBE

URETHRA

CERVIX

BLADDER

OVARY

