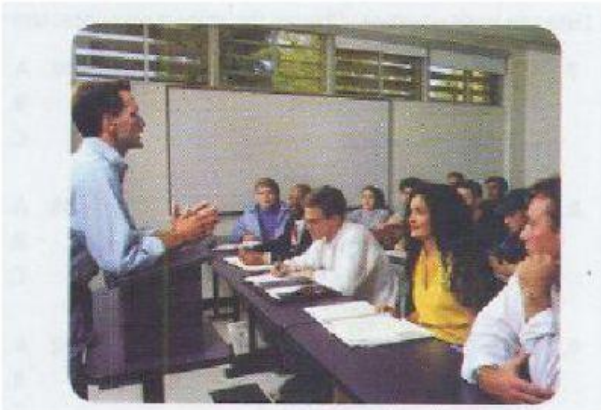
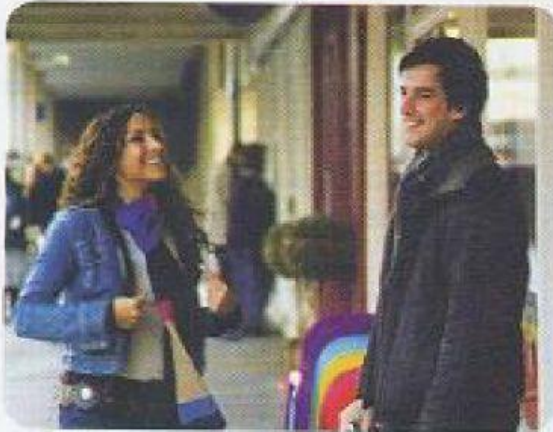


CD 4-5 Listen to part of a talk in a history class.



1. What is the talk mainly about?
  - A. Housing shortages in Rome
  - B. The history of high-rise buildings
  - C. The development of construction technology
  - D. Difficulties of life in the ancient world
  
2. What reasons does the professor give for the height limitation on buildings?
  - A. Lack of construction technology
  - B. Rules set by the government
  - C. Taller buildings were impractical for inhabitants
  - D. Safety concerns over multi-story buildings
  
3. What would generally be found on the upper stories of ancient Roman buildings?
  - A. Poor tenants
  - B. Wealthy families
  - C. Water tanks
  - D. Shops
  
4. What will the professor most likely talk about next?
  - A. High-rise apartments in modern times
  - B. Building practices in 12th century Europe
  - C. The palaces of the Roman Emperors
  - D. Unsafe buildings in other ancient societies

CD 4-6 ))) Listen to a conversation between two students.



5. What are the speakers mainly discussing?
- A. Differences in their musical tastes
  - B. Problems with a counselor
  - C. Issues with fellow students
  - D. Difficulties in finding accommodations
6. What will the man do about the situation?
- A. Insure the room is kept clean
  - B. Move in with his old roommate
  - C. Talk to a counselor about his problem
  - D. Wait before taking any further action

Listen again to part of the conversation.

7. What can be inferred about the man and his former roommate, Bill?
- A. They got along very well.
  - B. They were both studying for medical school.
  - C. They couldn't afford to be roommates this year.
  - D. They no longer go to the same university.

CD 4-7 ))) Listen to a conversation between a student and a woman.



8. What is the woman's occupation?
- A. Campus Housing officer
  - B. Private real estate agent
  - C. Furniture shop employee
  - D. Electronics salesperson
9. What does the man say about the application form?
- A. He needs a replacement form.
  - B. He never received it.
  - C. He's already submitted it.
  - D. He didn't read it.

Listen again to part of the conversation.

10. What does the woman imply?
- A. The man is already too late to apply for housing.
  - B. The man should apply soon, but doesn't need to pay the registration fee.
  - C. If the man waits to apply, there might not be any housing available.
  - D. The man is not taking the situation seriously.