



Name: ()	Class:	Date:
Parent's Initial:	Marks: /	Results: %

Section A: Multiple Choice. Choose the correct answer (40pts)

1. All living things need _____ to stay alive.

- (1) air only
- (2) air and water only
- (3) water and food only
- (4) air, food and water

()

2. Study the diagram below.



Which characteristic of living things is shown below?

- (1) Living things grow.
- (2) Living things respond to changes in their surroundings.
- (3) Living things need water and food to survive.
- (4) Living things do not like sunlight.

()

3. Which of the following explains why living things, especially animals, need to move?

- (1) To look for food only
- (2) To look for food and water only
- (3) To look for food, water and shelter only
- (4) To look for food, water, shelter, mates and escape from danger.

()





4. We can classify plants according to the following **except** for whether they _____.

- (1) produce flowers
- (2) live on land or in water
- (3) have a woody or weak stem
- (4) can survive without sunlight

()

5. Which of the following is **incorrect**?

	Flowering plants	Non-flowering plants
(1)	Can make food	Can make food
(2)	Bear flowers	Do not bear flowers
(3)	Reproduce through spores	Reproduce through seeds
(4)	Bear fruits	Do not bear fruits

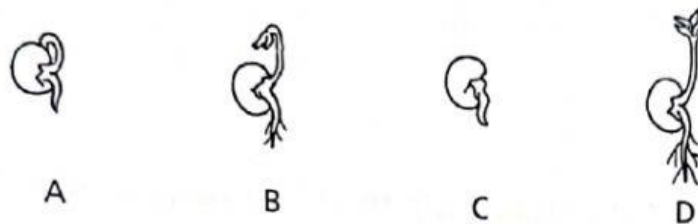
()

6. At which stage, will the plant not need sunlight to grow?

- (1) seed
- (2) young plant
- (3) adult plant with flowers
- (4) adult plant with fruits

()

7. The diagrams below show the different stages in the development of a seed into a seedling.



Which of the following shows the correct order in the development of a seed into a seedling?

- (1) A → C → B → D
- (2) A → C → D → B
- (3) C → A → B → D
- (4) C → B → A → D





()

8. Below are the flightless birds.



Penguin



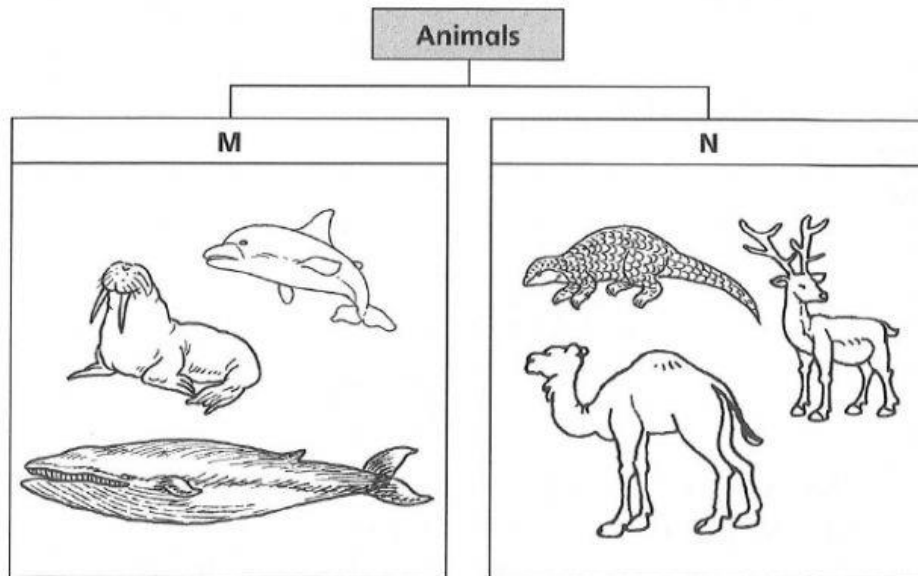
Ostrich

Which of the following is **not** their common characteristic?

- (1) They have beaks and tails.
- (2) They have feathers as their body coverings.
- (3) They need air, water and food to stay alive.
- (4) They reproduce by giving birth to live young.

()

9. Anna classifies several animals into two groups as shown below.



How are these animals classified?

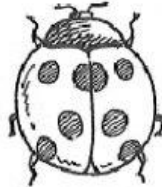
- (1) Whether they give birth to just one young or many at a time
- (2) Whether they give birth to young or lay eggs
- (3) Whether they live on land or in water
- (4) Whether they are fish or mammals

()





10. Study the animal below.



Which of the following is not its characteristic?

- (1) It has six legs.
- (2) It has feathers.
- (3) It has a hard outer covering.
- (4) It reproduces by laying eggs.

()

11. Which comparison between the life cycles of a cockroach and a butterfly are **incorrect**?

	Life cycle of a cockroach	Life cycle of a butterfly
A	Has three stages	Has four stages
B	The young resembles the adult.	The young does not resemble the adult.
C	The young and the adult live in the same surroundings.	The young and the adult live in different surroundings.
D	The young and adult feed on different kinds of food.	The young and adult feed on the same kind of food.

- (1) A and B only
- (2) B and C only
- (3) C and D only
- (4) B, C and D only

()

12. Which of the following about the breathing methods of an adult frog?

	On land	In water
(1)	Through moist skin	Through gills
(2)	Through moist skin	Through lungs
(3)	Through lungs	Through gills



IQ/P3/Science/Revision /Sarah

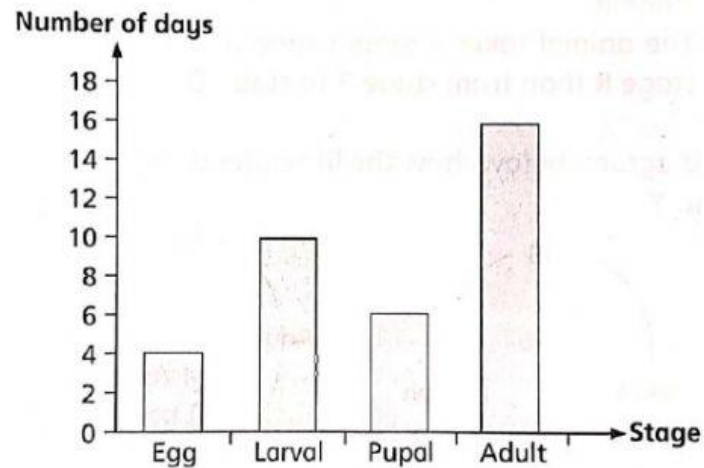


- (4)

Through lungs	Through moist skin
---------------	--------------------

()

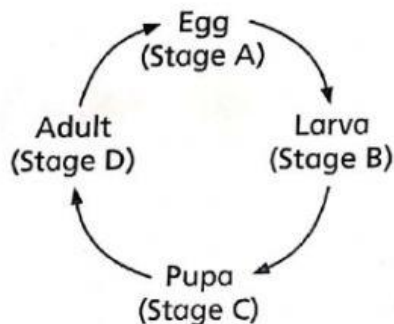
13. The graph below shows the number of days an insect spends in each stage of its life cycle.



- (1) The insect develops wings.
- (2) The insect is able to reproduce.
- (3) The insect moults several times.
- (4) The insect does not need to eat.

()

14. The life cycle of an insect is shown below.



At which stage does the body of the insect change the most?

- (1) A
- (2) B
- (3) C
- (4) D

()

15. Why does a caterpillar eat a lot?

- (1) It needs energy for breathing.





- (2) It needs energy to move actively.
- (3) It needs energy for reproduction.
- (4) It needs energy to undergo large changes during the pupal stage.

()

16. Below is a pair of glasses.



What property of material must part X have?

- (1) Strong
- (2) Flexible
- (3) Allows light to pass through
- (4) Allows water to pass through

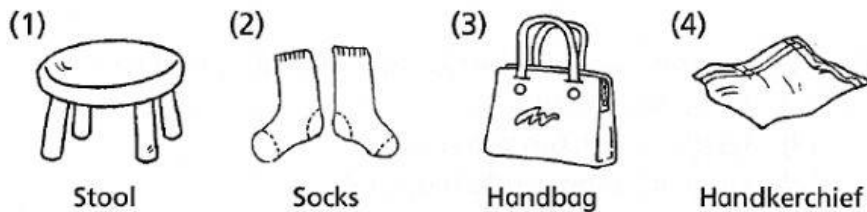
()

17. Which material may come from a living thing?

- | | |
|-------------|--------------|
| (1) Glass | (2) Metals |
| (3) Fabrics | (4) Plastics |

()

18. Which object cannot be made using fabrics?



()

19. Which statement about metals is true?

- (1) They float on water.
- (2) They come from the ground.
- (3) They allow light to pass through.
- (4) They allow water to pass through.

()

20. Which property of materials must be considered when making a key?





- (1) Strength
- (3) Buoyancy

- (2) Flexibility
- (4) Transparency

()

Section B. Open-ended questions (25 pts)

21. Below are some containers.



(a) Are the following properties important when choosing materials to make the objects above? Explain your answers.

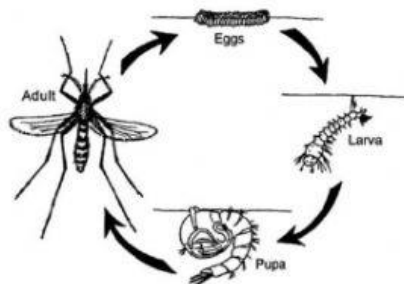
(i) Strength: _____

(ii) Transparency: _____

(iii) Waterproof or not: _____

(b) Suggest a suitable material for making the containers.

22. Tracy studied the life cycle of organism A shown below.

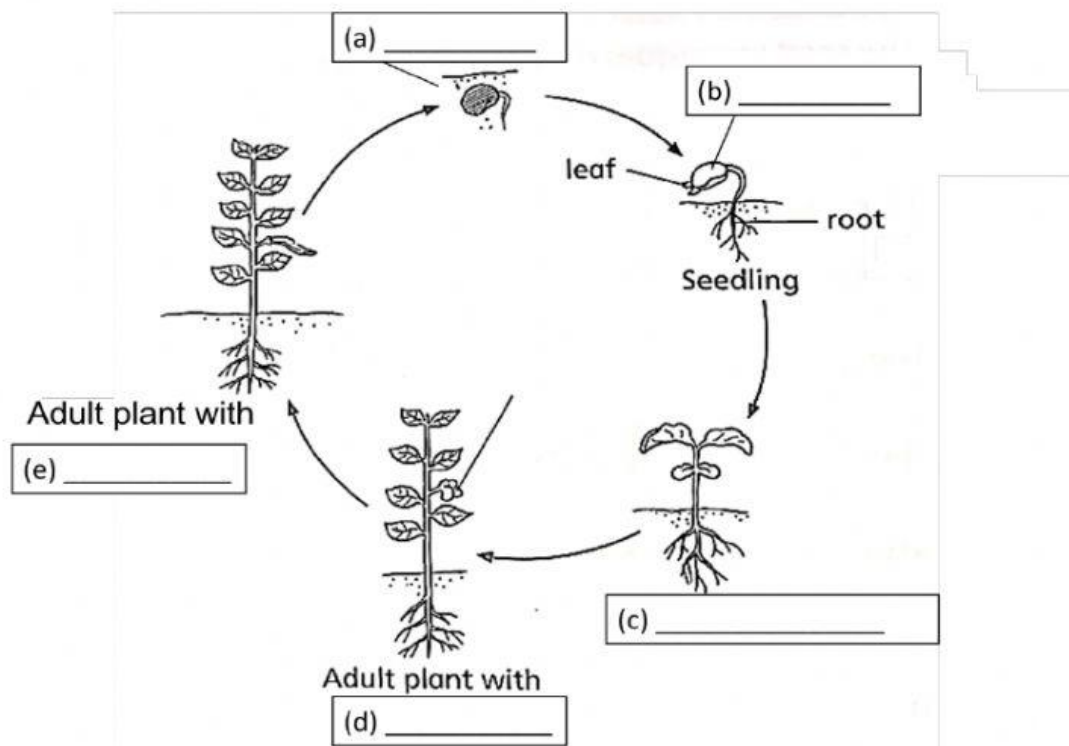


IQ/P3/Science/Revision /Sarah



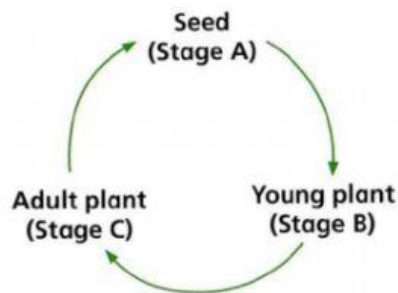
- (a) Tracy classified organism A as an insect.
State one characteristic of organism A which helped Tracy classify it as an insect.
-
- (b) Organism A lays its eggs in water. The young of organism A lives in water while the adult lives on land. Suggest two advantages for the young and the adult to live in different surroundings.
-

22. Complete the development of a flowering plant.





23. The life cycle of a plant is shown below.



- (a) At which stage of the life cycle does the plant
(i) need warmth to grow

(ii) bear flowers?

- (b) Lucia states that *all plants follow the life cycle above*.
Is the statement made by Lucia correct? Explain your answer.

