

SUN VALLEY SCHOOL

Science Short Test – First Period 2022

Teacher: Pamela Bermúdez Monge.

Fifth Grade

Time allowed: 80 minutes



Score:

Total points: 25 points

Points gotten: _____

Student's Name:

Date:

General Instructions:

- 1- Read carefully your test.
- 2- If you have a question, raise your hand and wait in silence for the teacher.

Observations:

First Part. Multiple Choice. (12 points, 1 point each)

A) **Select** the letter that has the correct answer. (12 points/1 point each one)

1. Which structure allows air to enter the body?

- (a) Trachea.
- (b) Lungs.
- (c) Bronchi.
- (d) Nasal passages.

2. Which structure Pumps blood to other parts of the body?

- (a) Heart
- (b) Stomach
- (c) Lungs
- (d) Cell

3. Which structure Helps to the food digestion?

- (a) Heart
- (b) Stomach
- (c) Lungs
- (d) Cell

3. Which areas study the different levels of organizations.?

- (a) Chemistry, biology and ecology.
- (b) Biology, bacteria and protozoa.
- (c) Chemistry, biology and microscope.
- (d) Microscope. Biology and chemistry.

4. The word that best completes the following sentence is in the option

_____.

The cell belongs to the _____ level of organization

- (a) 1st
- (b) 2nd
- (c) 3rd
- (d) 4th

5. The word that best completes the following sentence is in the option

_____.

The brain belongs to the _____ level of organization

- (a) 1st
- (b) 2nd
- (c) 3rd
- (d) 4th

6. The word that best completes the following sentence is in the option _____.

The butterfly belongs to the _____ level of organization

- (a) 1st
- (b) 2nd
- (c) 3rd
- (d) 4th

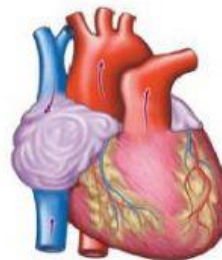
7. The word that best completes the following sentence is in the option _____.

The Tissue belongs to the _____ level of organization

- (a) 1st
- (b) 2nd
- (c) 3rd
- (d) 4th

8. . Look at the image. Which level of organization does it belong to?

- (a) Tissue.
- (b) Cell.
- (c) Organ.
- (d) Organism.



9. The word that best completes the following sentence is in the option _____.

- (a) 1st
- (b) 2nd
- (c) 3rd
- (d) 4th

The Muscle belongs to the _____ level of organization

10. Which sentence describes a multicellular organism?

- (a) The cells form colonies.
- (b) The organism has tissue.
- (c) The organism has only one cell.
- (d) It can only be seen by a microscope.

11. Which of the following form part of the circulatory system?

- (a) Only I.
- (b) I and II.
- (c) I, II and III.
- (d) I, II and IV.

I. Heart.
II. Blood.
III. Small intestine.
IV. Lungs.

12. Which level of biological organization includes all the others?

- (a) 1st level
- (b) 2nd level
- (c) 4th level
- (d) 5th level

Second Part. Short Answer. (8 points)

A) **Answer** the following questions.

1. What is a multicellular organism? (1 point)

2. What is an unicellular organism? (1 point)

3. Mention two unicellular organisms. (2 points)

4. Mention two multicellular organisms. (2 points)

5. What is the possible side effect of an irregular digestive track? (1 point)

6. Write one characteristic of a tissue. (1 point)

II PART. Identification (5 POINTS)

A) Number the levels from 1 to 5, from the least complex to most complex.

