



Patrice

## A New TV



Patrice needed a new TV. Her local appliance store was having a sale. A **sale** meant she could buy a TV at a lower price. She found a TV she liked. Patrice budgeted \$900 to buy a TV and had it mounted on her wall. She also had to pay 5% sales tax.

### Sales Receipt

#### Appliance Store

1 Mall Court Anytown, USA 53778

DATE 4/8/14

ITEM	PRICE
TV	\$650.00
WALL MOUNT CHARGE	\$200.00
SUBTOTAL	\$850.00
SALES TAX	\$42.50
TOTAL	\$892.50

### Answer

How much did Patrice budget to buy a TV?

- a. \$9.00                      b. \$90.00                      c. \$900.00

### Answer

1. Did Patrice stay within her budget?

- a. yes                      b. no

2. How much did the store charge to mount the TV on the wall?

- a. \$200.00                      b. \$650.00                      c. \$42.50

3. How much money did Patrice have left after she bought her TV?  
(show work)



# Vocabulary

**1**

## **budget**

a plan for spending and saving money



**2**

## **checking account**

an account that lets a person deposit and spend money



**3**

## **debit card**

a card that acts like a check



**4**

## **deposit**

money put into a checking/savings account



**5**

## **expenses**

money spent on something



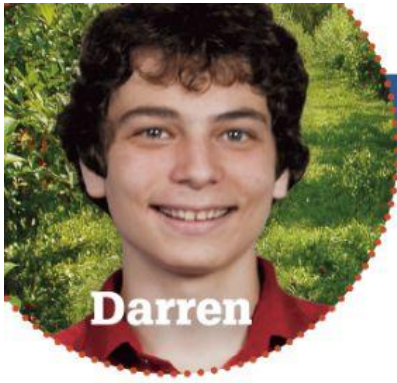
**6**

## **withdraw**

take money out of a bank account







## Darren's Day

Darren is a high school student and works part-time. He decided to make a budget for himself. A **budget** is Darren's plan for spending and saving his money. He budgets \$10.00 a day to spend. He rides to school on a city bus. A roundtrip ticket costs \$4.00. After school he likes to stop at a coffee shop. Today he bought a smoothie for \$4.75.



### Darren's Expenses



\$10.00

-\$4.00 to and from school



-\$4.75 smoothie

Total left

### **Answer**

Complete the problem on page 38 to find out how much money Darren had left at the end of the day.

### **Answer**

1. Did Darren stay within his budget? (circle one)  
a. yes                                      b. no
2. How much money does Darren spend on his bus fare each day?  
a. \$2.00                                      b. \$4.00                                      c. \$10.00
3. What do you think Darren should do with his left-over money?  
a. save it                                      b. spend it                                      c. add it to his daily budget