

## ACTIONS 2

What action is required when using a screwdriver?

What action is required when using a ladder?

1. Read the occupational manual. Then, mark the following statements as true (T) or false (F).

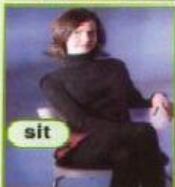
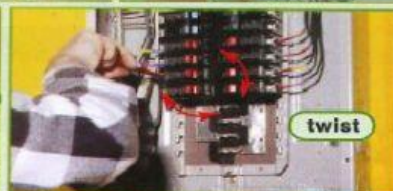
- 1 \_\_\_ Technicians frequently have to walk between job sites.
- 2 \_\_\_ Technicians regularly carry items that weigh up to 30lb.
- 3 \_\_\_ Technicians often crouch and twist while working.

2. Read the sentence and choose the correct word.

- 1 Maria struggled to **reach** / **bend** the book on the high shelf.
- 2 Michael **twists** / **drives** to get to his friend's house.
- 3 The tech **pushes** / **carries** his toolbox inside.
- 4 Clare **bends** / **drives** to pick up the screw she dropped.
- 5 The tech wanted to **sit** / **carry** at the workbench.
- 6 Kate **reaches** / **pushes** the power button to see if the device works.
- 7 Jim **twists** / **sits** the screw of the appliance loose.

### Job Duties

### Electronics Technician PHYSICAL



- 1 Technicians frequently have to **stand** and **walk**. This takes place in the office, or at the job site.
- 2 Technicians need to **sit** at a workbench for two hour stretches. They also sit when **driving** between job locations.
- 3 Technicians often **carry** items that weigh up to 30 lbs. Occasional **pushing** or **pulling** is needed.
- 4 Technicians sometimes **climb** stairs to reach job sites. It is sometimes necessary to climb ladders.
- 5 Technicians regularly **bend**, **crouch**, **reach**, **kneel**, and **twist**, while making repairs.
- 6 Technicians constantly use both their arms and hands during work.

**3. Read the sentence pair. Choose where the words best fit the blanks.**

**1 climbs / kneeled**

- a. The tech \_\_\_\_\_ on the floor in front of the TV.
- b. The workman \_\_\_\_\_ the ladder so that he can get to the roof.

**2 Stand / walk**

- a. Martin had to \_\_\_\_\_ because there were not enough chairs.
- b. Nicole decided to \_\_\_\_\_ rather than take the bus.

**3 Pulled / crouched**

- a. The woman \_\_\_\_\_ down to fix the broken pipe.
- b. The man \_\_\_\_\_ on the car handle and the door opened.

**4. Listen to a conversation between a new tech and an experienced tech. Choose the correct answers.**

- 1 What is the conversation mostly about?
  - a. The ways to avoid soreness.
  - b. The physical demands of the job.
  - c. The experienced tech's complaints.
  - d. The variety of duties on the job.
- 2 What was the experienced tech's hardest experience on the job.
  - a. Carrying 20lbs of weight
  - b. Walking up two flights of stairs.
  - c. Kneeling for six hours
  - d. Climbing a ladder

**5. Listen again and complete the conversation.**

- New Tech: I've just \_\_\_\_\_. What's the work like?
- Experienced Tech: Pretty good. \_\_\_\_\_ from job to job.
- New Tech: What was your hardest job?
- Experienced Tech: Once I spent six hours kneeling. I was doing repairs. \_\_\_\_\_  
\_\_\_\_\_ can be tough on the back sometimes, too.
- New Tech: I bet. Do you have to \_\_\_\_\_ a lot?
- Experienced Tech: We rarely have to carry \_\_\_\_\_ 30 pounds. I remember one time the elevator didn't work.
- New Tech: What happened?
- Experienced Tech: I had to carry 30 pounds up \_\_\_\_\_ of stairs! That was rough.