

FINAL TEST PREPARATION OF SCIENCE GRADE 6



Full Name : _____

Class : _____ Attendance List : _____

Bismillahirrahmaanirrahim

CHECKPOINT 2015 PAPER 1 PART 2

Answer the questions based on the instruction given.

- 9 Humans have a skeleton inside their body.



- (a) Complete the sentences.

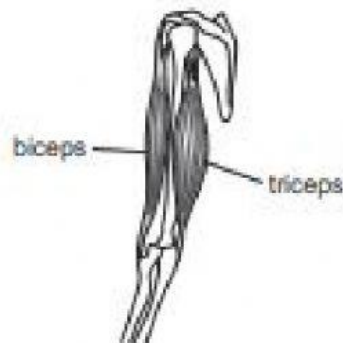
The protects the brain.

[1]

The protects the lungs.

[1]

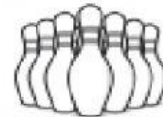
- (b) Muscles are used to make bones move.



What happens to your biceps muscle when you bend your arm?

[1]

10 Here are some pictures.



(a) Circle the pictures that have energy because they are moving.

The first one has been done for you.

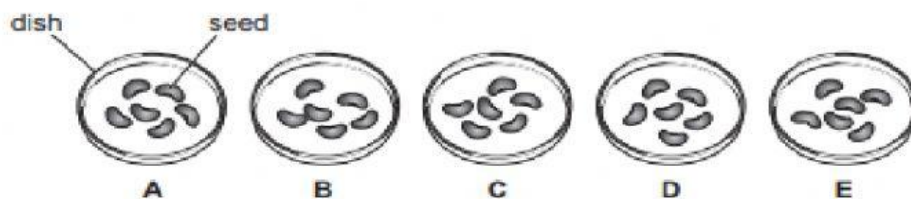
[2]

(b) Describe how the animal in the first picture can increase its movement energy.

[1]

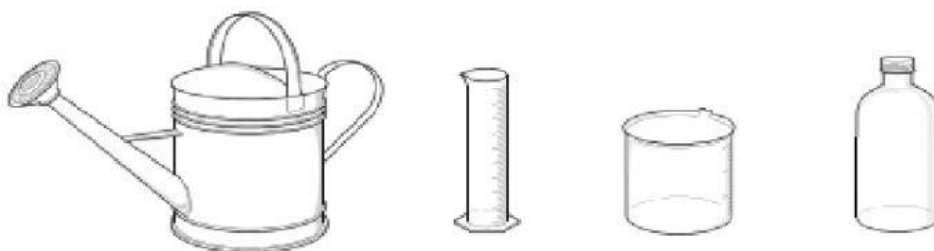
11 Jamila and Safia investigate the germination of seeds.

They put six seeds in each dish.



(a) Safia pours the same **volume** of water into each dish.

Circle the apparatus she uses to measure the volume accurately.



[1]

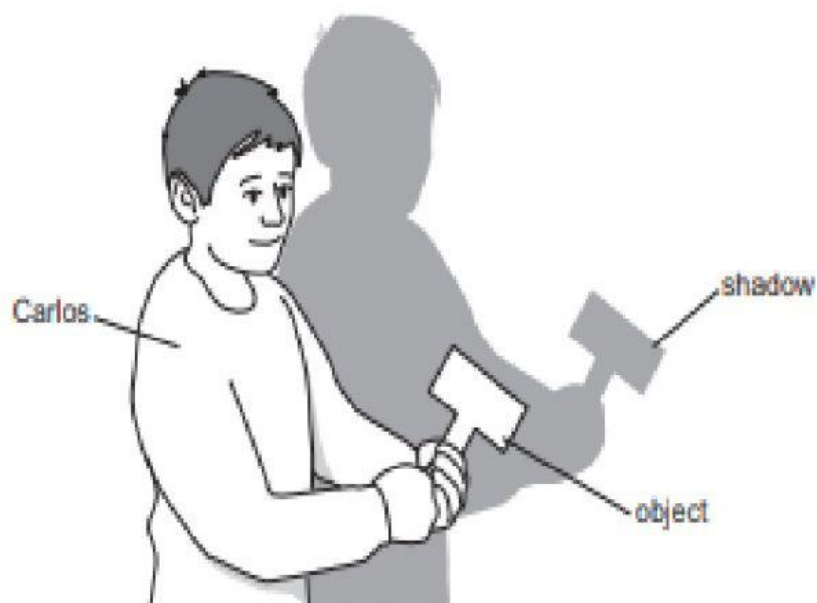
(b) Jamila puts the dishes in areas with different temperatures.

She measures the temperature of each dish.

What equipment does she use?

[1]

12 Carlos uses different materials to investigate shadows.



(a) Look at the shadow.

Circle the correct description of the object.

the object is opaque

the object is transparent

the object is transparent and opaque

[1]

(b) Carlos moves closer to the source of light.

What happens to the size of the shadow?

Circle the correct answer.

decreases

increases

stays the same

[1]

(c) Carlos stops moving.

The intensity of the light is increased.

What happens to the size of the shadow?

Circle the correct answer.

decreases

increases

stays the same

[1]

13 Humans can have positive and negative effects on the environment.

A new road is being built near your school.

Complete the table to show if the effects are positive or negative.

reason	positive? (tick ✓)	negative? (tick ✓)
creates jobs		
removes trees		
fills in a pond		

[2]

14 Aiko investigates the time it takes sugar cubes to dissolve in water.

This is what she does in her first experiment.

- adds 100 cm³ of water to a beaker
- adds one sugar cube to the water
- stirs the water and sugar cube with a glass rod
- measures the time it takes for the sugar cube to dissolve.

(a) What piece of equipment does she use to measure the time?

..... [1]

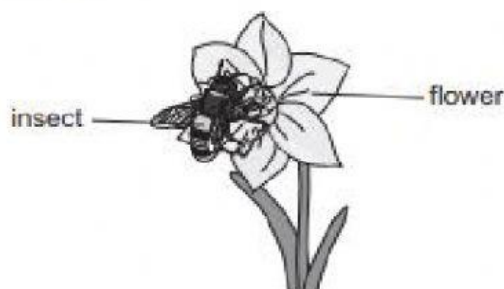
(b) In her second experiment she wants to use two sugar cubes instead of one.

She wants to do a fair test.

What volume of water should she use?

..... cm³ [1]

15 Many plants have flowers.



(a) Which **two** parts of the flower attract insects?

Circle the **two** correct answers.

carpel

nectary

petal

sepal

stigma

[1]

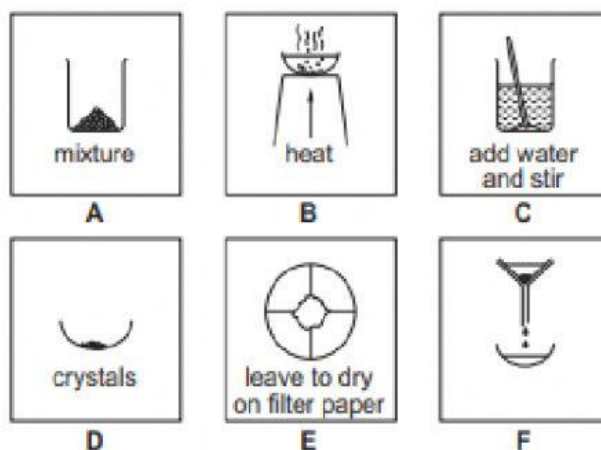
(b) Complete the sentence.

Pollen fertilises the ovum. This produces [1]

16 Gabriella wants to separate a mixture of salt and sand.

The diagram shows the steps she uses.

They are not in the correct order.



(a) Put the steps in the correct order.

Two have been done for you.

A			E		
---	--	--	---	--	--

[2]

(b) Which solid substance is on the filter paper in step E?

[1]

(c) Steps B and F are processes.

Draw a line between the **step** and the **process** that happens.

