

Cambridge IELTS 16 Listening Test 01

PART 1

Questions 1 – 10

Complete the notes below.

Write ONE WORD AND/OR A NUMBER for each answer.

Children's Engineering Workshops

Tiny Engineers (ages 4-5)

Activities

- Create a cover for an **1** so they can drop it from a height without breaking it.
- Take part in a competition to build the tallest **2**
- Make a **3** powered by a balloon.

Junior Engineers (ages 6-8)

Activities:

- Build model cars, trucks and **4** and learn how to program them so they can move.
- Take part in a competition to build the longest **5** using card and wood.
- Create a short **6** with special software.
- Build, **7** and program a humanoid robot.

Cost for a five-week block: £50

Held on **8** from 10 am to 11 am

Location

Building 10A, **9** Industrial Estate, Grasford

Plenty of **10** is available.

PART 2

Questions 11 – 14

Choose the correct letter, **A**, **B** or **C**.

11 Stevenson's was founded in

A 1923.

B 1924.

C 1926.

12 Originally, Stevenson's manufactured goods for

A the healthcare industry.

B the automotive industry.

C the machine tools industry.

13 What does the speaker say about the company premises?

A The company has recently moved.

B The company has no plans to move.

C The company is going to move shortly.

14 The programme for the work experience group includes

A time to do research.

B meetings with a teacher.

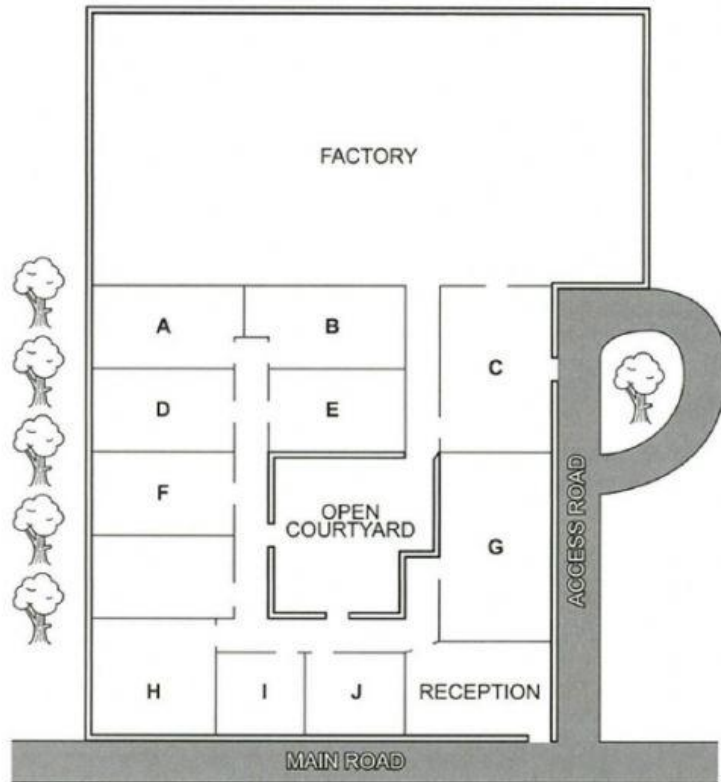
C talks by staff.

Questions 15-20

Label the map below.

Write the correct letter, **A-J**, next to Questions 15-20.

Plan of Stevenson's site



- 15 coffee room
- 16 warehouse
- 17 staff canteen
- 18 meeting room
- 19 human resources
- 20 boardroom