

¡VAMOS A REPASAR!

1. Relaciona cada término con su definición:

PUNTILLO

Suma los tiempos de las notas que une

LIGADURA

Prolonga la duración de la nota

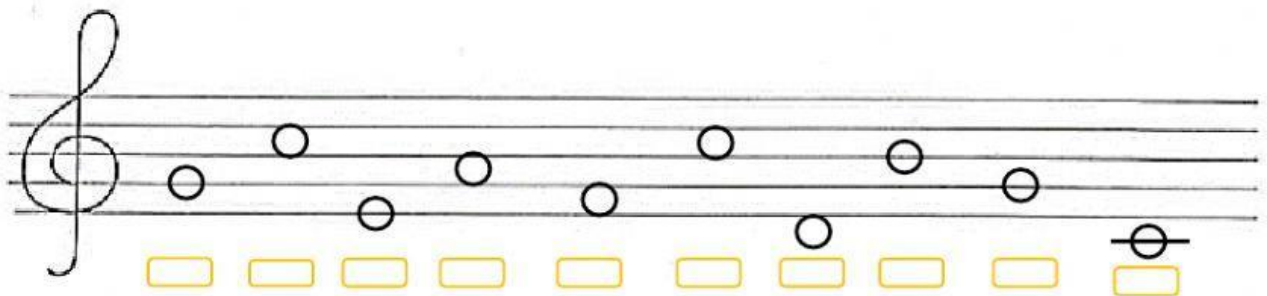
CALDERÓN

Aumenta a la nota la mitad de su valor

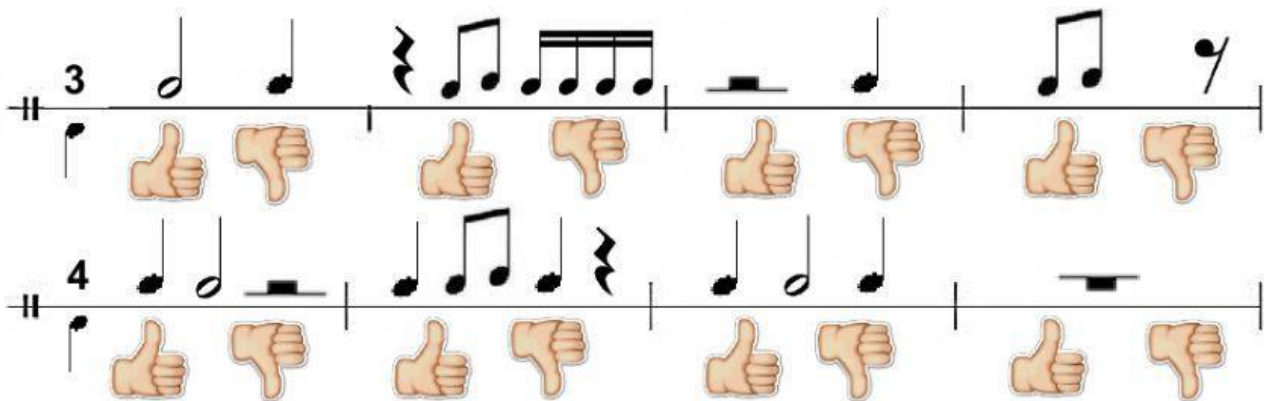
2. Completa la tabla:

FIGURA	NOMBRE	DURACIÓN
		
		
		
		
		
		
		
		

3. Selecciona el nombre de la nota correspondiente.



4. Selecciona si es correcto o incorrecto cada compás.



Exercise 4 shows two staves of musical notation. The first staff is in 3/4 time and the second in 4/4 time. Each measure contains a sequence of notes and rests. Below each measure are two hand icons: a thumbs up (indicating 'correct') and a thumbs down (indicating 'incorrect').

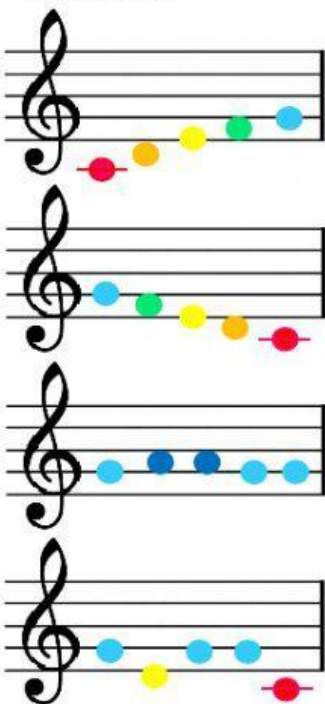
5. Escucha los ritmos y une según su orden.



Exercise 5 shows four boxes, each containing a different rhythmic pattern represented by musical notes and rests. The patterns are: Box 1: Quarter, eighth, eighth, quarter, eighth, eighth, quarter. Box 2: Quarter, quarter, quarter, quarter, quarter. Box 3: Quarter, quarter, quarter, quarter, quarter. Box 4: Quarter, quarter, quarter, quarter, quarter.



6. Escucha las notas en el piano y selecciona el esquema que corresponde a cada uno.



Exercise 6 shows four musical staves, each with a sequence of notes represented by colored dots. The sequences are: Staff 1: Red, yellow, green, blue, red. Staff 2: Blue, green, yellow, orange, red. Staff 3: Blue, blue, blue, blue, blue. Staff 4: Blue, yellow, blue, blue, red.