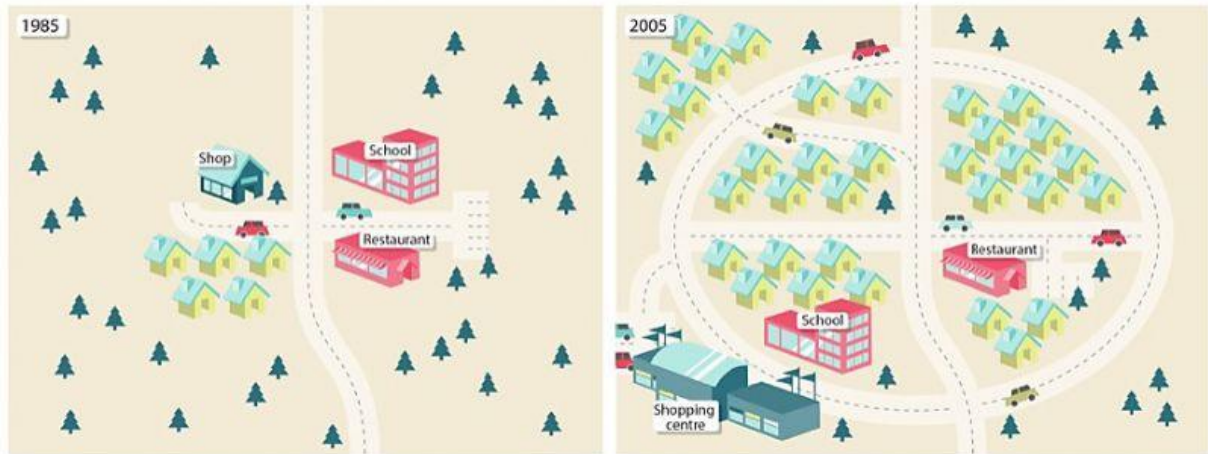


C. WRITING

Exercise 1 :

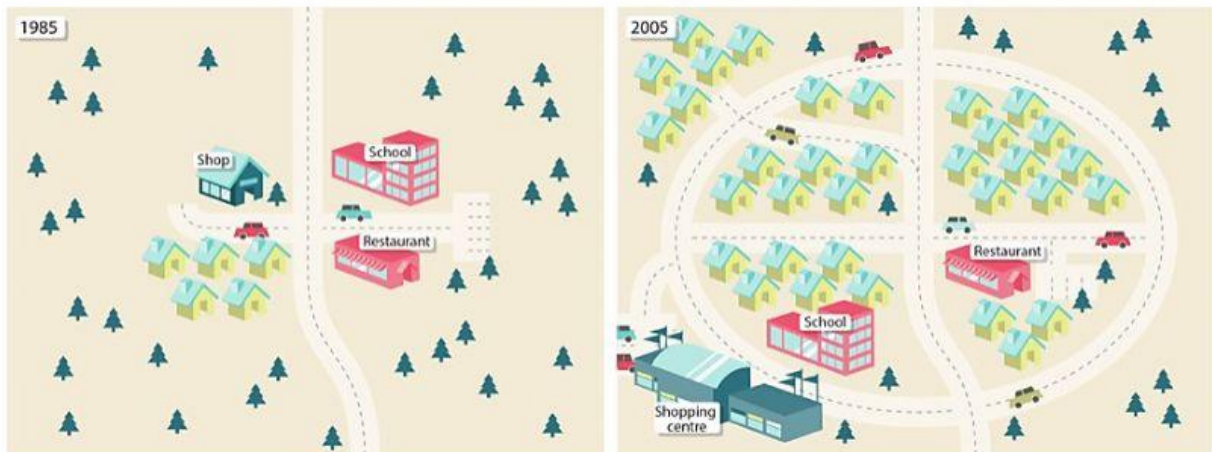
In IELTS Writing Task 1, you may be asked to describe one or two maps.

Look at the two maps. Then choose the correct words to complete the sentences.



1. The pictures compare/ show two maps.
2. The maps show changes/ improvements over time.
3. The map changes need to be explained/ described in your report.
4. The maps show different times in the past/ future.
5. The first map shows the location before new facilities/ shops were built.
6. The second map displays the same location after change/ development.

Exercise 2: Choose the correct words and phrases to complete the report.



The two maps show the layout of Green Village in different years. The first one shows the village in 1985 and the second shows how it looked in 2005. To begin/ Overall, it can be seen

that the village has been extended and enlarged in almost all areas. To begin/ Although, the biggest change is that a new road was built around the village. As a result/ Regarding this, the village has had several new developments: new houses were built both in the centre and out of the village. In addition to/ As a result of these, a new shopping centre was built on the southern edge of the village. As a result of/ Overall this, we can see that the small shop in the middle of the village disappeared. Although/ However, the restaurant remained in the same location in the centre of the village. Although/ However the school is still in the centre, it was moved from the north to the south of the village.

Exercise 3: Look at the maps again. Then complete the sentences using the words in the box. You can use the words more than once.

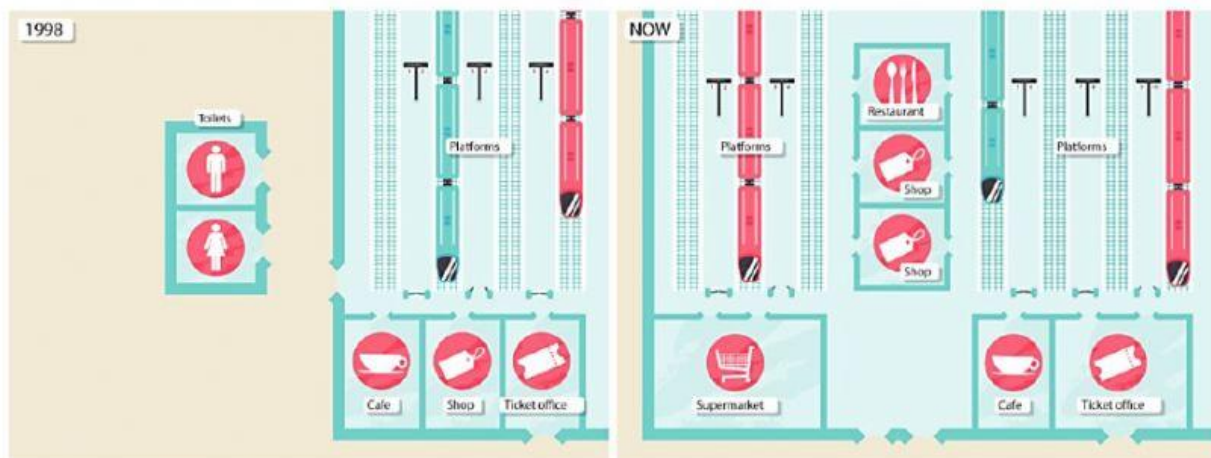
these

this

which

- 1 There were many changes between 1985 and 2005. changes resulted in a much larger village.
- 2 The school was moved to the south. made space for more houses.
- 3 The shopping centre, is outside the village, led to the local shop closing down.
- 4 New housing was built all around the village. changed its character completely.
- 5 Originally there were only four things on the map. were located around a crossroads.
- 6 The village, was very small in 1985, was much larger by 2005.

Exercise 4: Look at the maps of a railway station in 1998 and now. Then look at the things which have changed and match them with the correct verbs. You can use one verb more than once.



- | | | |
|-----------------------|---|-------------|
| 1 number of platforms | ● | ● extended |
| 2 supermarket | ● | ● built |
| 3 old shop | ● | ● removed |
| 4 ticket office | ● | ● increased |
| 5 toilets | ● | |

Exercise 5: Look at the maps again. Then choose the correct words to complete the report. You will need to use some words more than once.

café platforms restaurant shops ticket office toilets

The maps show Shebdon Railway Station in 1998 and the present day. We can see that the station has been expanded, with significantly more facilities available to customers now compared with 1998. Firstly, the station has been developed and the number of has increased.

In 1998, there were only four platforms but today there are seven. A has been added between the new and old platforms and the number of has grown, as there are now two shops situated next to the restaurant and the old shop has been removed. The remains in the same place but has been extended and is now much larger.

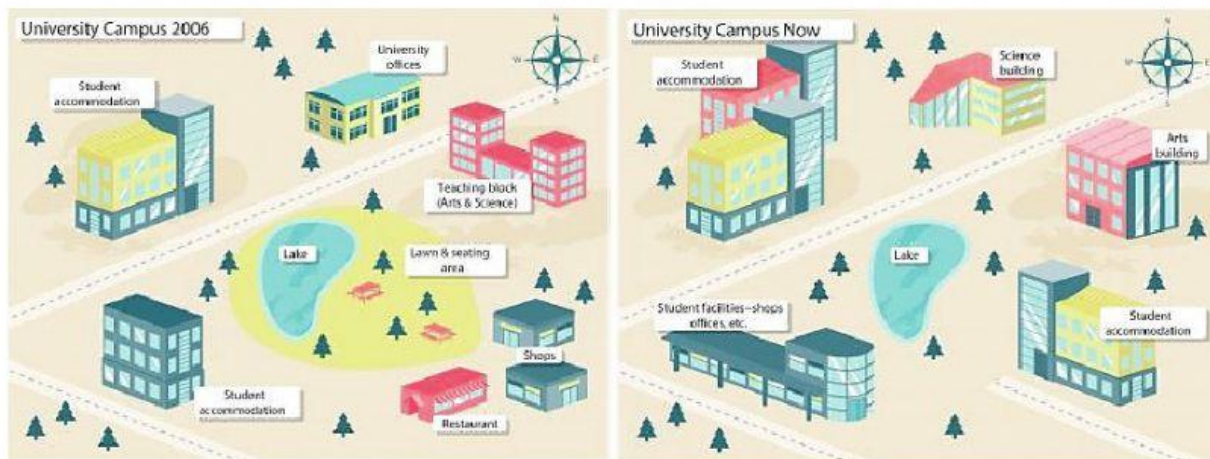
The has also stayed in roughly the same place, which is at the bottom of the old platforms.

The were previously in a separate building next to the platforms, but they have now disappeared. A new supermarket has been built at the bottom of the new .

WRITING TASK 1

The maps show improvements that have been made to a university campus between 2006 and the present day.

Write at least 150 words

This image shows a blank sheet of white paper with horizontal ruling lines. The lines are evenly spaced and run across the width of the page. There are no margins, text, or other markings on the paper.

This image shows a full page of white paper with horizontal blue or grey ruling lines. The lines are evenly spaced and run across the width of the page, typical of notebook paper. There are no margins, text, or other markings on the page.