



BTC Formation School Inc.

Grand Terrace Subdivision

Casili, Consolacion, Cebu



MUSIC 1



SHOW YOU CAN!

A. Sing the action song. Then answer the questions below.
Encircle the letter of the correct answer.

My Toes, My Knees

My toes, my knees,

My shoulder, my

head (Repeat 3x)

We all clap our
hands

1. The head is in the upper part of our body, what tone is also in the upper part of the line and space?

- a. Do b. Re c. Mi d. So

2. If the DO is in the ledger line and in the lowest position, according to the song, what part of the body is also located in the lowest position?

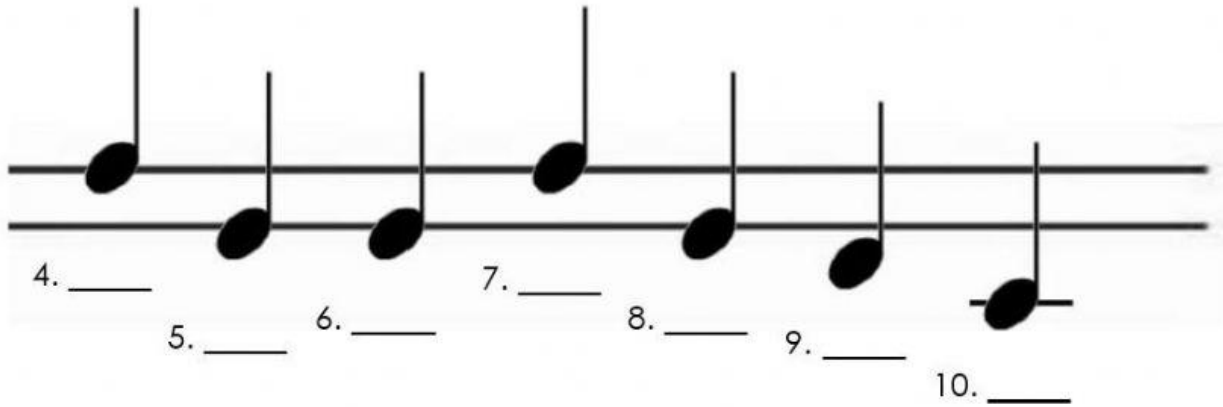
- a. Foot b. Knee c. Shoulder d. Head

3. If the knee is above the foot, in the tones studied, what tone is above the DO?

- a. Do b. Re c. Mi d. So

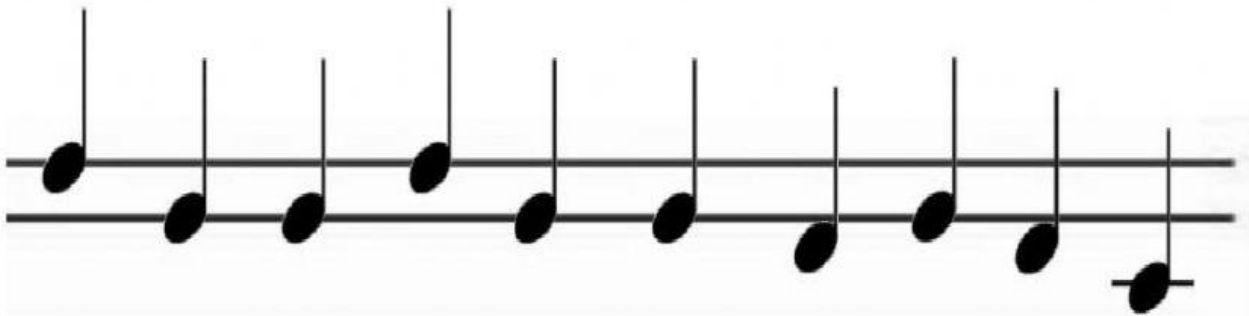
For numbers 4-10.

Identify the position of each note below. Write if the note is SO, MI, RE and DO on the blank.



B. Choose what is asked.

1. Which is the melodic pattern SO-MI?



2. Which is the melodic pattern MI-SO?



3. Which is the melodic pattern MI-RE-DO?

