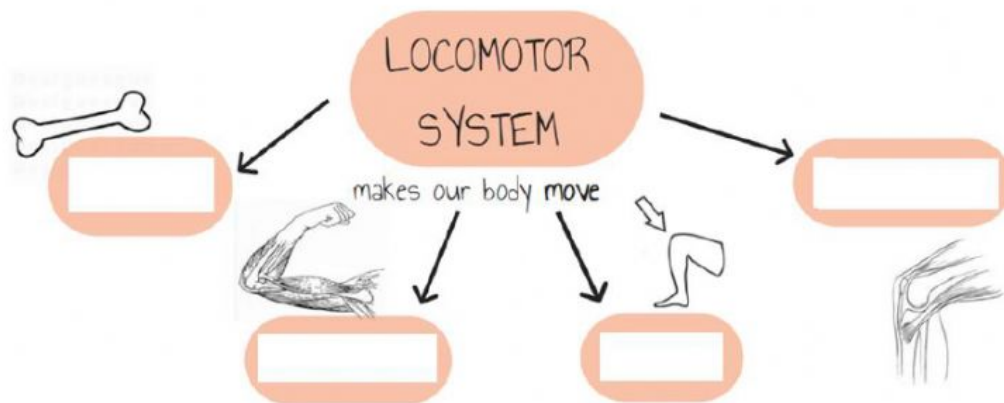


1- Write the parts of the locomotor system.



2- Write true or false:

Muscles are hard and flexible. _____

Muscles are elastic and flexible. _____

Bones make up the digestive system. _____

Bones make up the skeleton. _____

Bones support the body and protect the organs. _____

Tendons are where two or more bones meet. _____

Tendons attach the muscles to the bones at the joints. _____

3- Match the correct joint with the circle.

