

¡VAMOS A REPASAR!

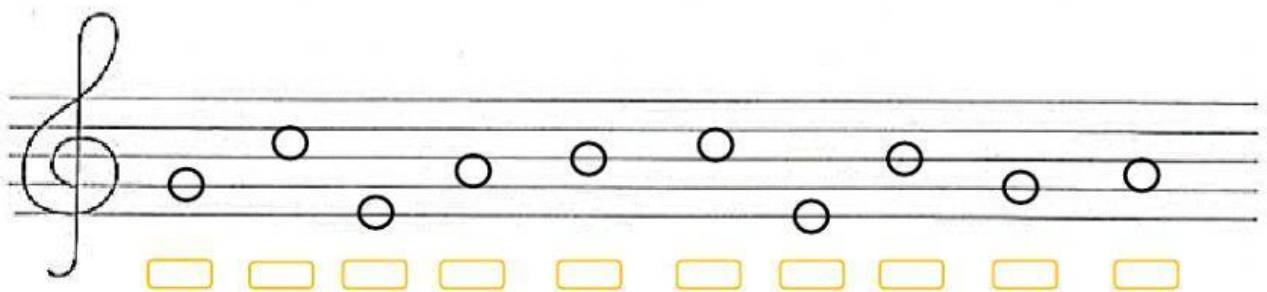
1. Empezamos con un poco de **percusión corporal**, colócate y dale al Play:



2. Completa la tabla:

FIGURA	NOMBRE	DURACIÓN
		
		
		
		
		
		

3. Selecciona el nombre de la nota correspondiente.



4. Selecciona si es correcto o incorrecto cada compás.

The exercise shows two musical staves. The first staff is labeled '2' and contains four measures of music in 2/2 time. The second staff is labeled '3' and contains four measures of music in 3/4 time. Below each measure, there are two thumbs: a thumbs up (correct) and a thumbs down (incorrect). The student must select the correct thumbs for each measure.

5. Escucha los ritmos y une según su orden.

Four boxes containing different musical rhythms for matching:

- Box 1: Quarter note, quarter note, eighth note, eighth note, quarter rest.
- Box 2: Quarter note, quarter note, quarter note, quarter note.
- Box 3: Quarter note, quarter rest, quarter note, quarter rest.
- Box 4: Quarter note, half note, quarter note.



6. Escucha las notas en el piano y selecciona el esquema que corresponde a cada uno.

Four musical staves showing different note sequences for identification:

- Staff 1: Red, yellow, green, blue, red (ascending).
- Staff 2: Blue, green, yellow, red, blue (descending).
- Staff 3: Blue, blue, blue, blue, blue (constant).
- Staff 4: Blue, yellow, blue, blue, red (mixed).