

## CHIEF'S SPEECH - GREY'S ANATOMY

### TASK

Listen to the Chief's speech. Complete the blanks.

Each of you comes today \_\_\_\_\_ (a), wanting in on the game. A month ago, you were in \_\_\_\_\_ (b) being taught by doctors. Today... you are the \_\_\_\_\_ (c). The seven years you spend here as a surgical \_\_\_\_\_ (d) will be the \_\_\_\_\_ (e) and the \_\_\_\_\_ (f) of your life. You will be pushed to the \_\_\_\_\_ (g) point. Look around you. Say hello to your \_\_\_\_\_ (h). Eight of you will switch to an \_\_\_\_\_ (i) speciality. Five will \_\_\_\_\_ (j) under the pressure. Two of you will be asked to \_\_\_\_\_ (k). This is your \_\_\_\_\_ (l) line. This is your arena. How well you \_\_\_\_\_ (m), that's \_\_\_\_\_ (n) to you.

- (a) careful / hopeful
- (b) my school / med school
- (c) doctors / actors
- (d) resident / president
- (e) good / best
- (f) bad / worst
- (g) cracking / breaking
- (h) friends / competition
- (i) easier / breezier
- (j) break / crack
- (k) leave / live
- (l) finishing / starting
- (m) may / play
- (n) up / out

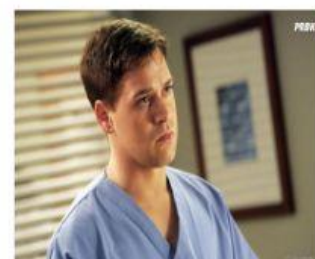


**Meredith Grey** - She is the protagonist. Her mother was a Surgical Goddess. She needs to prove she is worthy as a surgeon, too. Her story with her mother is difficult. Meredith is bold, quick, she is a natural. She thinks outside the box and uses her intuition along with her logical skills. She's good at making decisions under pressure.



**Cristina Yang** - She is the most competitive intern. She is a machine, very cerebral, a real shark. She already has a PHD when starts Internship. She went to a very important medical school. She is extremely focused and trains her mind and hands to be the best.

**George O'Malley** - He is a sensitive man, a bit out-placed. He is an idealistic person, he went to medical school to help people. He considers the job very heroic. He is insecure, but intuitive. He is human for the good or for the bad.



**Alex Karev** - He is the opposite of George. He is the toxic male one in the group. In fact, he hides a past of tragedies in his childhood related to family. He becomes a very good surgeon while he learns how to deal with his own emotions treating children.



**Izzie Stevens** - She is the pretty one. She is optimistic and a real believer. People think she lives in a Barbie world. But she fought poverty living in a trailer since childhood and is the only one who paid for her medical school with a job as a model. She needs to fight prejudice to prove she is not just another pretty face.

**CHALLENGE.** Write a similar paragraph about yourself. You have only 3 minutes.

