

GRAMMAR & VOCABULARY

Part 1. Match.

- | | |
|--|----------------------------------|
| 0. Frogs use their tonguee..... | a. because they are scary. |
| 1. Goats use their horns | b. to eat leaves. |
| 2. Why don't you like spiders? | c. because it needs to run fast. |
| 3. Parrots use their wings | d. to fight. |
| 4. Giraffes use their tongue | e. to catch flies. |
| 5. Why does an ostrich have long legs? | f. to fly. |

Part 2. Look. Circle the correct answer.

A desert a cave a forest a web an island



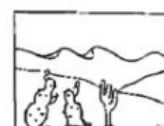
0. a hive

1.

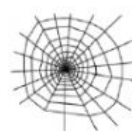
2.



3.



4.



5.

READING (10 pts) Read. Circle A, B or C.

Rain Forests

Rain forests are warm, wet forests. The plants here make a lot of the oxygen.

A rain forest has four parts: **Emergent**, **Canopy**, **Understory**, and **Forest Floor**.

In the **Emergent** part, you can see the tops of very tall trees. Many different birds, butterflies, and other insects live here. In the **Canopy**, trees have many leaves. Birds, spiders, tree frogs, monkeys, and snakes live here. In the **Understory** part, it is dark, wet, and cool. There aren't many plants. Snakes and lizards live here. Jaguars like to live in this part, too! In the **Forest Floor**, there are many insects and spiders – some spiders are as big as plates. There are many large animals. And people live here, too!

1. What do plants in rain forests make?

- A. home B. rain C. oxygen

2. What are there in the **Emergent** part?

- A. tops of short trees B. tops of very tall trees C. tops of very tall animals

3. Which animals are there in the **Canopy** part?



A. jaguars

B. tigers

C. monkeys

4. What is TRUE about the *Understory* part?

A. It's dark, wet, and warm.

B. People also live here.

C. There aren't many plants.

5. How are the animals in the *Forest Floor* part?

A. large

B. small

C. scary