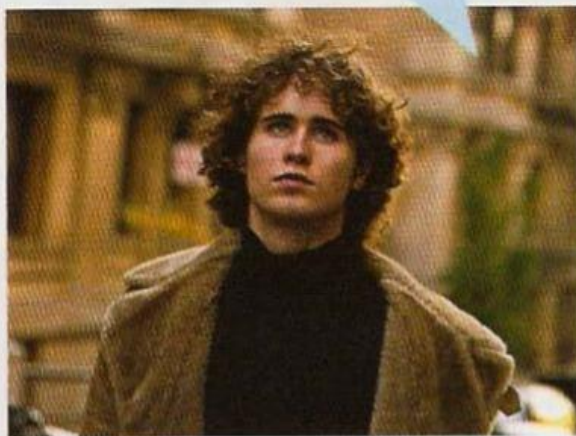


B In a suburb

The **area** where I live is **ideal**. It's a **suburb** not far from the centre and it's quite **lively**, but there's still a feeling of **space**, and my block of flats is **surrounded by** trees. It's also a **handy** place to live because there are good **local** shops, and a bus service that gets me into the centre in 15 to 20 minutes. The only **disadvantage** is that with the **growth** in the population, it's gradually becoming more **built-up** than it used to be, which is **a shame**.



spotlight **area, region, district, part**

The word **area** can be used for part of a town, country, or the world. A **region** is part of a country or the world, e.g. *a desert region*. A **district** is part of a town or country, often with special qualities, e.g. *the financial district*. A **part** is often used when we are talking about a town, e.g. *a lovely part of the city*.

Glossary

suburb an area outside the centre of a town, where a lot of people live.

ideal perfect; the best possible.

lively full of interest, and with things to do.

space a place or area that is empty and not used.

surrounded by sth If a building is **surrounded by sth**, that thing is all around it.

handy INF located near to things you need. SYN **convenient**.

local located in the area where you live.

disadvantage a situation or thing that is not good or causes problems. SYN **drawback**.
OPP **advantage**.

growth an increase in size or number.

built-up with a lot of buildings.

a shame a fact or situation that makes you feel disappointed. SYN **a pity**.

5 Same or different? Write S or D.

► One of the **suburbs/areas** outside the centre. S

- 1 The **ideal/perfect** place to live. _____
- 2 A mountainous **area/region**. _____
- 3 We need more **growth/space**. _____
- 4 It was a **pity/shame**. _____

5 A **handy/lively** area. _____

6 It's a commercial **district/area**. _____

7 It's a real **disadvantage/drawback**. _____

8 It's a large **space/suburb**. _____

6 Complete the sentences with a suitable word.

► There used to be lots of space, but now it's a really **built-up** area.

- 1 I live in a _____ about two kilometres from the centre.
- 2 Unfortunately, the whole area is _____ by factories, which is a _____.
- 3 There are a few _____ shops just round the corner.
- 4 It's very _____ because it's close to my children's school and the place where I work.
- 5 It's a nice area with great shops; the only _____ is that the bus service is terrible.
- 6 We've found our _____ house: it has absolutely everything we want.

7 ABOUT YOUR AREA Write your answers, or ask another student.

- 1 Is your area built-up, or is there a feeling of space? _____
- 2 What is your home surrounded by? _____
- 3 What local shops do you have? _____
- 4 Is it a handy place to live for you? _____
- 5 What are the disadvantages? _____