

Name: \_\_\_\_\_

Date: \_\_\_\_\_

# Mammals

Body covering: \_\_\_\_\_



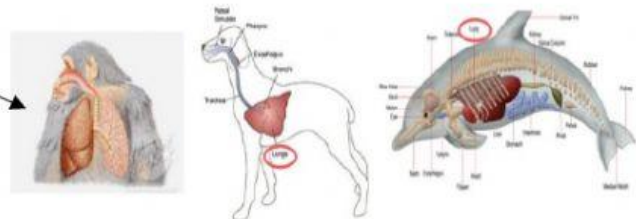
\_\_\_\_\_ - blooded

Reproduce by \_\_\_\_\_



Has \_\_\_\_\_ to breathe in air.

## MAMMALS BREATHE THROUGH...



Female feed \_\_\_\_\_ to their young.



## Mammals that lay eggs

