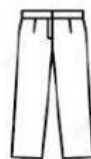


Choose the best answer!

1. What does your brother wear for going to the office?
A. trousers
B. skirt
C. shirt
D. blouse



2. Andi wears for swimming.
A. T-shirt
B. Shorts
C. Pajamas
D. Swimsuit

3. Keenan : Do you wear shirt?
Nia : ...
A. Yes, I does
B. Yes, I do
C. No, I do
D. No, I do not



4. He wears a because the weather is cold.
A. Skirt
B. Cap
C. Jacket
D. Singlet

5. The girl usually wears a skirt. The word **skirt** means ...
A. gaun
B. rok
C. sepatu
D. celana



6. Tiara is an elementary school student. She wears white and red to school.
A. shirt; skirt
B. T-shirt ; shoes
C. short ; shirt
D. shirt ; shoes
7. In the winter season the weather is cold. We have to wear a ...
A. cap
B. raincoat
C. sweater
D. shirt

Text for number 8 to 10

I go to the Sumber Sukses clothes shop because I want to buy clothes for my brother. I need a black trousers and a blue shirt. It looks nice for him.

8. The writer goes to the
A. Sumber Sukses clothes shop
B. Sumber Sukses shoe shop
C. Sumber Sukses market
D. Sumber Sukses bakery
9. Why does the writer go to Sumber Sukses?
Because she wants to buy ...
A. shocks for her sister
B. clothes for her brother
C. daily needs

- D. clothes for herself
10. The writer needs and
- A. red skirt and pink T-shirt
 - B. blue shirt and black trousers
 - C. pink T-shirt and black skirt
 - D. white shirt and pink T-shirt

Text for number 11 to 13

Mr. Philip and Mrs. Lindale will attend a wedding anniversary party. The party is held in a hotel. They wear formal costumes.

Mr. Philip wears suit and tie for the wedding anniversary party, the suit is red and the tie is black. He also wears brown shoes. He looks awesome. Mrs. Lindale wears a blouse and a skirt. The blouse is red and the skirt is red too. She also wears brown high heels shoes. She looks stunning.

11. Where will Mr. Philip and Mrs. Lindale go?
- They will go to ...
- A. a birthday party
 - B. a wedding anniversary party
 - C. a flag ceremony
 - D. a dinner
12. What does Mrs. Lindale wear?
- She wears, and
- A. red high heels ; purple blouse ; purple skirt
 - B. brown blouse ; brown skirt ; pink high heels
 - C. red blouse ; red skirt ; brown high heels
 - D. pink blouse ; pink skirt ; purple high heels
13. Suit in Indonesian means
- A. setelan jas
 - B. kaos
 - C. sabuk
 - D. dasi
14. My father wears because the weather is hot.
- A. T- Shirt
 - B. jacket
 - C. coat
 - D. sweater
15. Anin : Do you wear for school?
Nida : Yes, I do
- A. uniform
 - B. belt
 - C. gloves
 - D. cap
16. Sitta wears to go to school.
- A. T-shirt
 - B. trousers
 - C. uniform
 - D. shorts
17. Mother : Anita, don't forget to wear your It is raining outside!
Anita : All right, Mom.
- A. raincoat
 - B. sweater
 - C. suit
 - D. uniform



18. I wear ... to protect my head from the sun.
A. shoes
B. cap
C. slippers
D. belt
19. Zia : I think about an animal.
Rose : What is that?
Zia : It has two legs. It has comb on his head. It eats seeds. It lives in a farm. It crows in the morning. What animal is it?
Rose : I think it is a
A. horse
B. sheep
C. cow
D. rooster
20. Liza : How many legs does a cow have?
Nia : It has legs.
A. four
B. three
C. two
D. one
21. Diana : Do you have a hen?
David : Yes, I do.
Diana : What can it produce?
David : It can produce
A. wool
B. egg
C. milk
D. energy
22. Haris : What is the color of a pig?
Catty : It is ...
A. yellow
B. pink
C. orange
D. purple
23. Goat is a farm animal. It in the farm.
A. live
B. lives
C. lived
D. living
24. The cow ... milk. It ... grass.
A. produces ; eats
B. producing ; eating
C. produce ; eat
D. produced ; ate
25. A rabbit ... four legs and two ears.
A. has
B. have
C. had
D. having

The text for number 8-9!

A horse is a farm animal. It lives in the farm. It has big and strong body. It has four legs and a long tail. The color is brown, black, or white. It eats grass. People raise it for its energy to pull a cart. The sound is neigh.

26. What animal is in the text about?
A. cat
B. dog
C. pig
D. horse
27. What can it produce?
A. It can produce milk.
B. It can produce energy.
C. It can produce egg.
D. It can produce meat.
28. How is horse's body?
A. It is big and strong.
B. It is small.
C. It is thin.
D. It is medium size.
29. is – Sheep – farm – a – animal.
A. Sheep is animal a farm
B. Sheep is a farm animal
C. is animal farm a Sheep
D. is Sheep farm animal a
30. a sheep - sound – of – The – bleat – is.
A. sound a sheep of The bleat is
B. The sound of a sheep is bleat
C. The bleat is a sound of sheep
D. bleat The sound is a sheep of
31. Meidi : Does pig have four legs?
Tine :
A. Yes, it is
B. Yes, it does
C. No, it is not
D. No, it does not
32. Gerry : Is a hen small?
Tom :
A. Yes, it is
B. Yes, it does
C. No, it is not
D. No, it does not
33. How many legs does a pig have?
A. It has three legs
B. It has six legs
C. It has two legs
D. It has four legs
34. It is farm animal. It lives in a pond. The sound is quack. It is
A. pig
B. cow
C. duck
D. hen
35. The color is pink. The sound is snort or oink. It is medium size. It is

- A. cow
- B. pig
- C. duck
- D. hen