

LISTENING

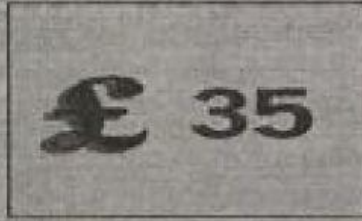
TEST 5

PART 1:

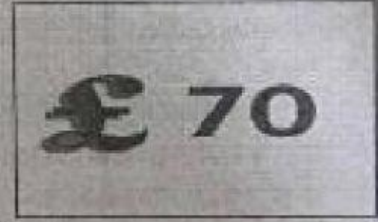
1. How much did the dress cost?



A

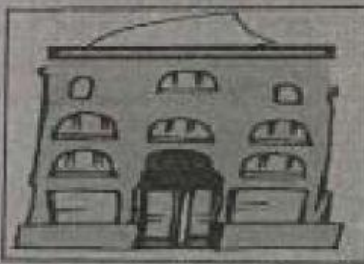


B



C

2. What type of accommodation does the woman live in?



A



B

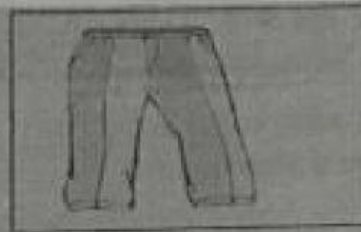


C

3. What did the man get for Christmas?



A



B



C

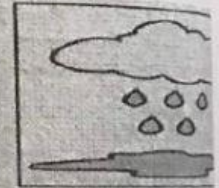
4. What is the weather like?



A



B



C

5. What's the boy favourite subject?



A



B



C

PART 2:

Listen to a manager giving information about a bike race. Put a tick (✓) in the correct box. You will hear the conversation twice.

6. What date is the Race on?

- A. 20th of September
- B. 22nd of December
- C. 22nd of September

7. What color can't the competitors wear?

- A. Black
- B. Blue
- C. Green

8. How many members are there in each team?

- A. four
- B. three
- C. seven

9. On the day of the race, the teams are suggested?

- A. being ready for the race
- B. getting up and having breakfast around 7 am
- C. being ready for early breakfast

10. At 20 km, there will be a place not for

- A. snacks
- B. orange juice
- C. chocolate

Listen to Tony talking to Lisa about a science club competition. Put a tick (✓) in the correct box. You will hear the recording TWICE

11. Which building will the competition be in?

- A. the school
- B. the town hall
- C. the university

12. How has the team decided to get there?

- A. By bus
- B. On foot
- C. By underground

13. The total number of questions in the quiz will be _____.

- A. five
- B. fifteen
- C. twenty - five

14. Tony's favourite area of science is _____.

- A. biology
- B. chemistry
- C. physics

15. Winners of the competition get _____.

- A. T-shirts
- B. cinema tickets
- C. a box of chocolates

Listen to a woman phoning a furniture shop about a sofa. For each question, put a tick (✓) in the correct box. You will hear the recording TWICE.

16. The size of the sofa is _____.

- A. 1 metre 85
- B. 1 metre 95
- C. 2 metres

17. The only sofa in the shop is _____.

- A. red
- B. green
- C. black

18. The sofa costs _____.

- A. £590
- B. £600
- C. £635

19. The driver can take the sofa on _____.

- A. Monday
- B. Wednesday
- C. Thursday

20. The shop closes at _____.

- A. 5.45
- B. 7.00
- C. 7.15

You will hear an announcement about what's on television tomorrow. put a tick (✓) in the correct box. You will hear the recording TWICE.

21. The RAIWAY PRINCESS is on television from _____.

- A. 9.00 to 10.00
- B. 9.00 to 10.30
- C. 9.30 to 11.00

22. There is a music programme for teenagers _____.

- A. early in the morning
- B. before lunch
- C. at lunchtime

23. You can see a football match between _____.

- A. Ireland and Spain
- B. Brazil and Ireland
- C. Spain and Italy

24. If the weather is bad, there will be no _____.

- A. cycling
- B. skiing
- C. tennis

25. In the quiz programme, teams have to guess _____.

- A. the year
- B. the person
- C. the place

PART 3

Questions 26 - 30

You will hear a woman talking to a shop assistant about buying a video film for her daughter. Listen and complete questions 26 - 30. You will hear the information TWICE.

VIDEO

- Actor in film: Brad Smith
- Name of film: Blue (26) _____
- For people: (27) _____ years old or more
- Cost (28) £ _____
- Video shop in (29) _____ Street
- Opposite (30) _____

You will hear someone talking about a sports camp for children. Listen and complete questions 31 - 35. You will hear the recording TWICE.

SUNNINGTON SPORTS CAMP

Choice of afternoon activity:

- Sign list outside (31) _____ room

Clothes:

- wear track suit, but also bring (32) _____, a T-shirt and 2 pairs of sports (33) _____

Food:

- Lunch is in the canteen between 12.15 and (34) _____
- Snack bar sells drinks, chocolate and biscuit

Certificate: Marks given for

- *attitude*: effort and team work
- *performance*: strength, (35) _____ and skill