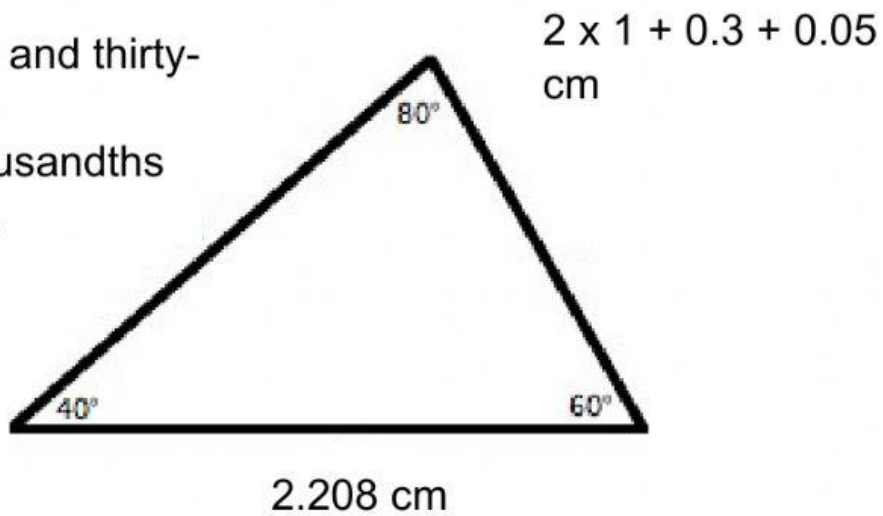


Perimeter of Triangles Practice

Type your answer in the box or
select the answer.

A

two and thirty-five thousandths cm.

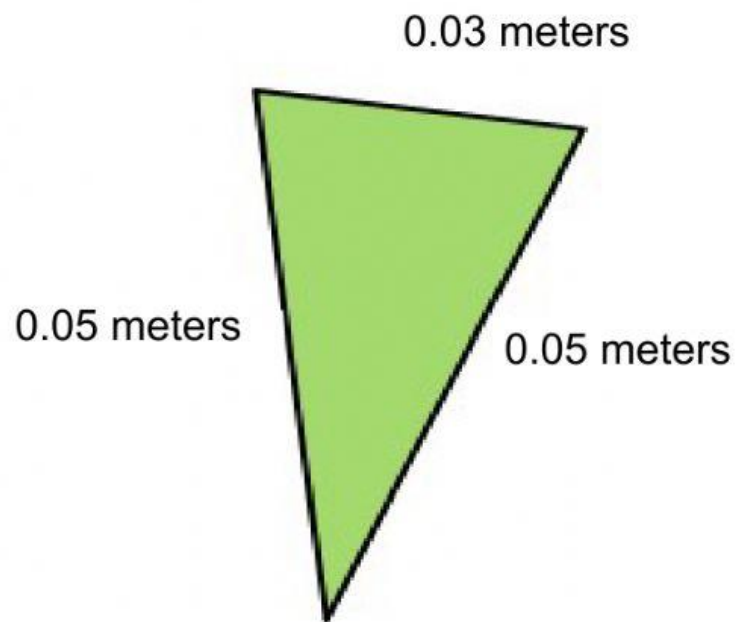


Perimeter = _____ cm

Classify the triangle (2 answers)

Acute Obtuse Right Scalene Isosceles Equilateral

B

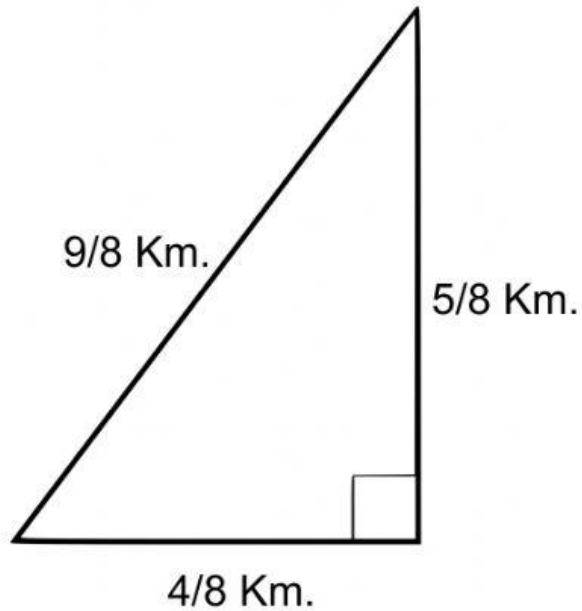


Perimeter = _____ m

Classify the triangle (2 answers)

Acute Obtuse Right Scalene Isosceles Equilateral

C



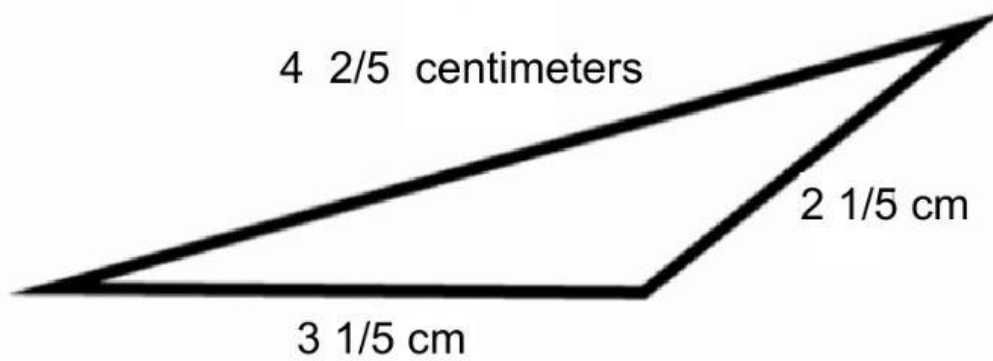
Perimeter = __ Km. $29/8$ $18/8$ $2 \frac{3}{8}$ $9/8$

(select two correct answers)

Classify the triangle (2 answers)

Acute Obtuse Right Scalene Isosceles Equilateral

D



Perimeter = _____ cm $9 \frac{4}{5}$ $10 \frac{4}{5}$ $9 \frac{4}{15}$

Classify the triangle (2 answers)

Acute Obtuse Right Scalene Isosceles Equilateral

E



Perimeter = _____ m

Classify the triangle (2 answers)

Acute Obtuse Right Scalene Isosceles Equilateral