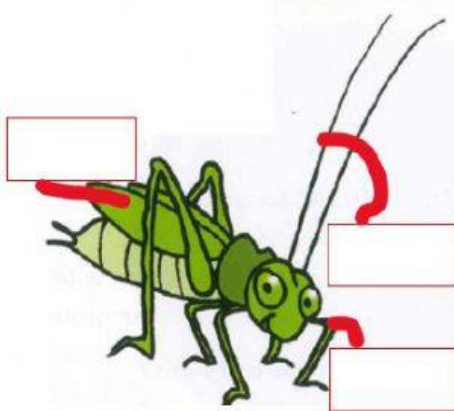
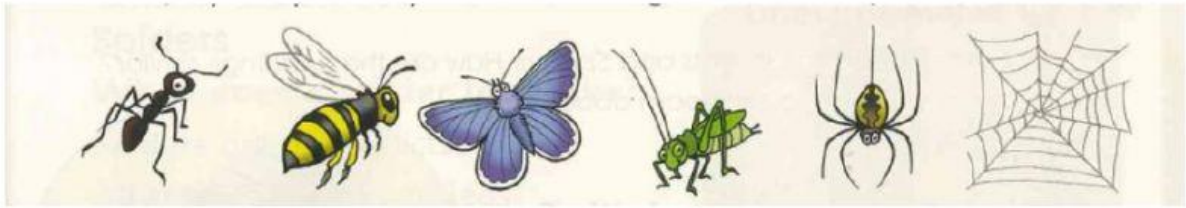


GE2 UNIT 6

Ms Cảnh

1/ LOOK AT THE PICTURE AND WRITE



Wings, legs, antennae

2/ READ AND WRITE T/ F:

Ants

What does an ant look like?

An ant is an insect. It has six legs and two antennae. Ants use their antennae to feel, smell and taste.

These ants are using their antennae to communicate. What do you think they are saying?



a/ An ant is an insect.

b/ An ant has 8 legs.

c/ Ants use their antennae to feel, smell and eat.

d/ An ant has 2 antennae.

3/ READ AND WRITE:

Where do ants live?

Ants live in big groups.
Some ants build homes with
many rooms under the ground.



What do ants eat?

Ants eat leaves, seeds, bugs and other things.
When ants go to find food, they leave a smell trail.
They carry their food home, following their smell trail.

**a/ Some ants build homes with many under the
.....**

**b/ Ants eat leaves,, and other
things.**

**They carry their food home, following their
.....**

THE END