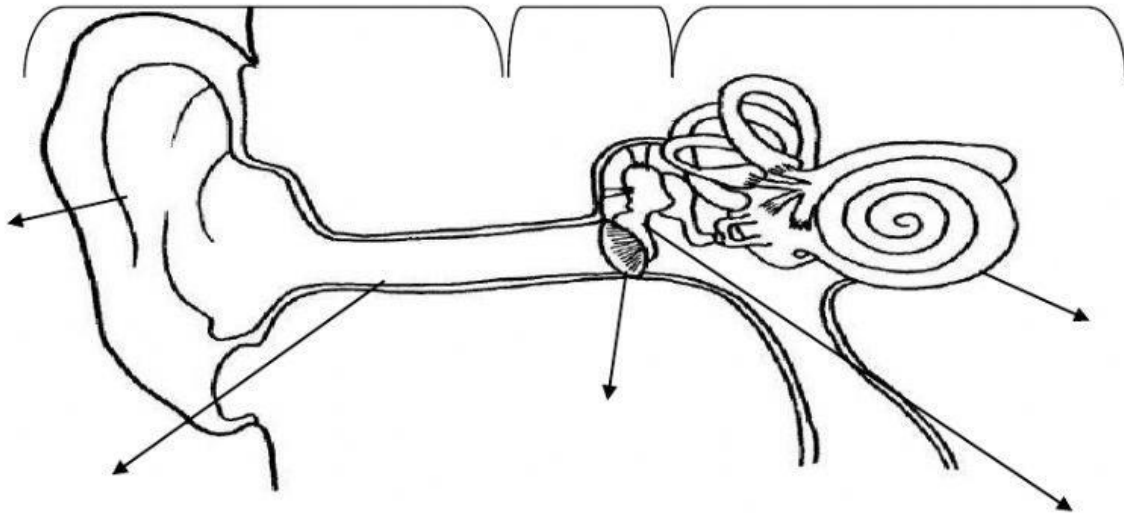


1. Label the picture.

outer ear - ear canal - ossicle bones - cochlea -
middle ear - inner ear - eardrum - ear flap -

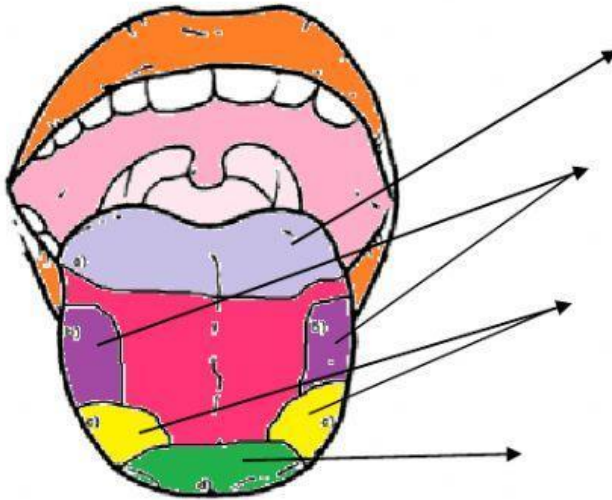


2. Write the parts of the nose.

Olfactory bulb - Nasal cavity - Nasal septum - Nostrils



3. Write SOUR, BITTER, SWEET and SALTY.



4. Write TRUE or FALSE.

- a. The sense of touch allows us to smell things.
- b. Through touch, we collect this information and send it to the heart.
- c. The sense of touch allows us to feel the texture of an object is rough or smooth.
- d. The nose covers the whole body and protects the organs inside.
- e. Skin is made up of several layers and is constantly renewed.