

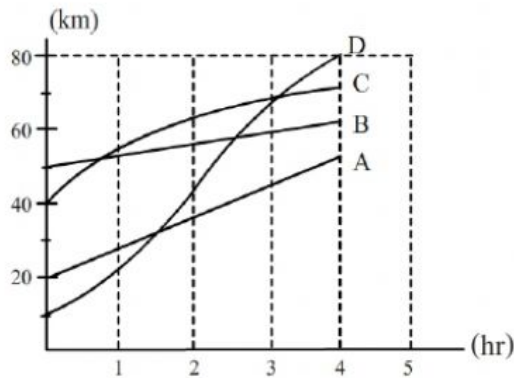


87. There are two rooms separated by a door as shown in a figure. Air pressure in room A is 5 atm and in room B is 3 atm. What is the air pressure when the door is opened?



- 1) 3 atm  
2) 4 atm  
3) 5 atm  
4) Equal to out of room.

แนวทอสยบวิทยาศาสตร์  
รอบแรก พ.ศ. 2559



88. Look at the graphs, four racers are biking. The monitor is showing their distance for every minute. Who will be the fastest and the slowest?

- 1) A and D  
2) B and C  
3) C and D  
4) B and D

