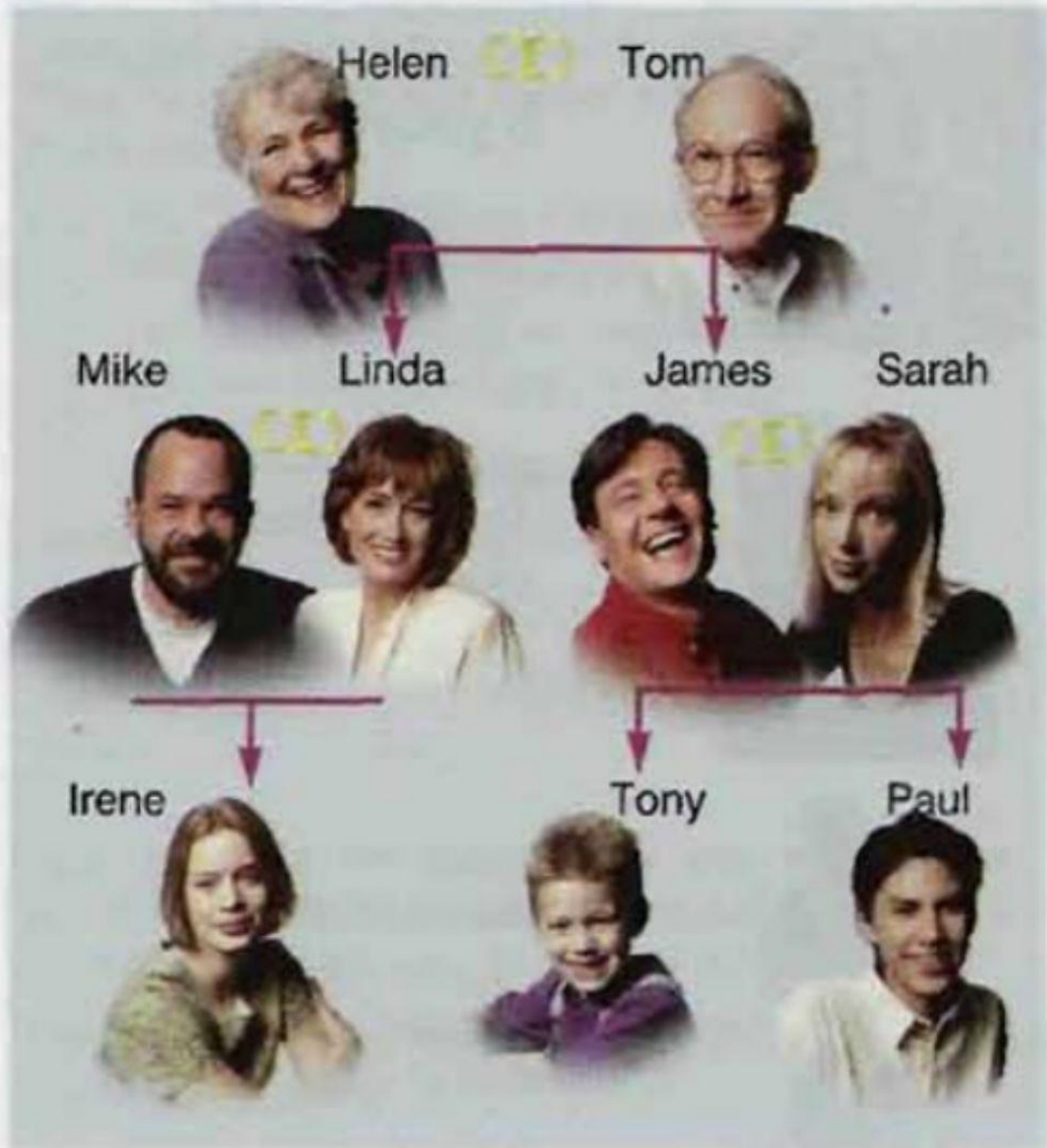


Look at the family tree and fill in the gaps with the possessive case in the answers below.



- Who is Mike? He's 1) ...*Linda's*... husband.
 Who is Paul? He's 2) and son.
 Who is Irene? She's 3) and daughter.
 Who is Sarah? She's 4) wife.
 Who is Helen? She's 5) and mother.
 Who is Tony? He's 6) brother.