

# LIVING THINGS

## EXERCISE 1



## EXERCISE 2

CELL

It is a set of one type of cells grouped together, performing the same function.

ORGAN

It is a group of tissues that has a specific form and function.

TISSUE

It is a group of several organs that perform a function together.

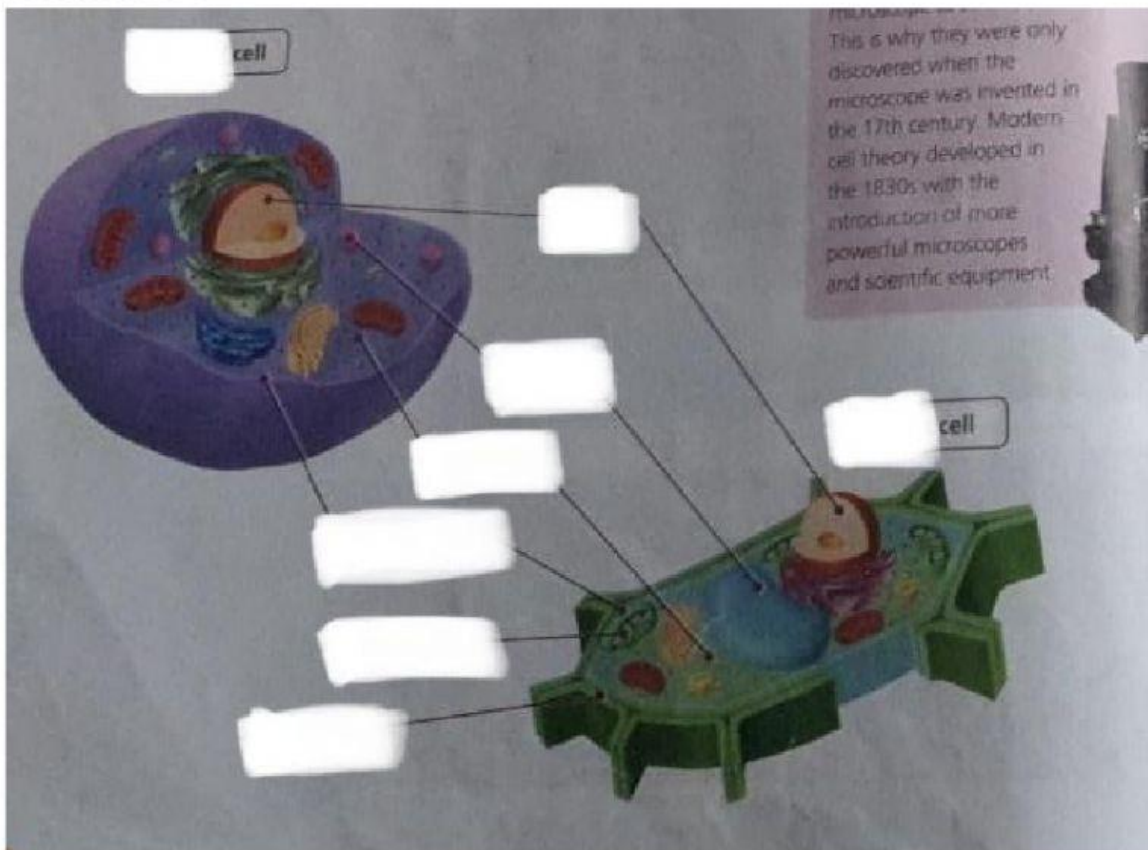
SYSTEM

It is the first level of organization and the smallest unit of life that makes the three vital functions.

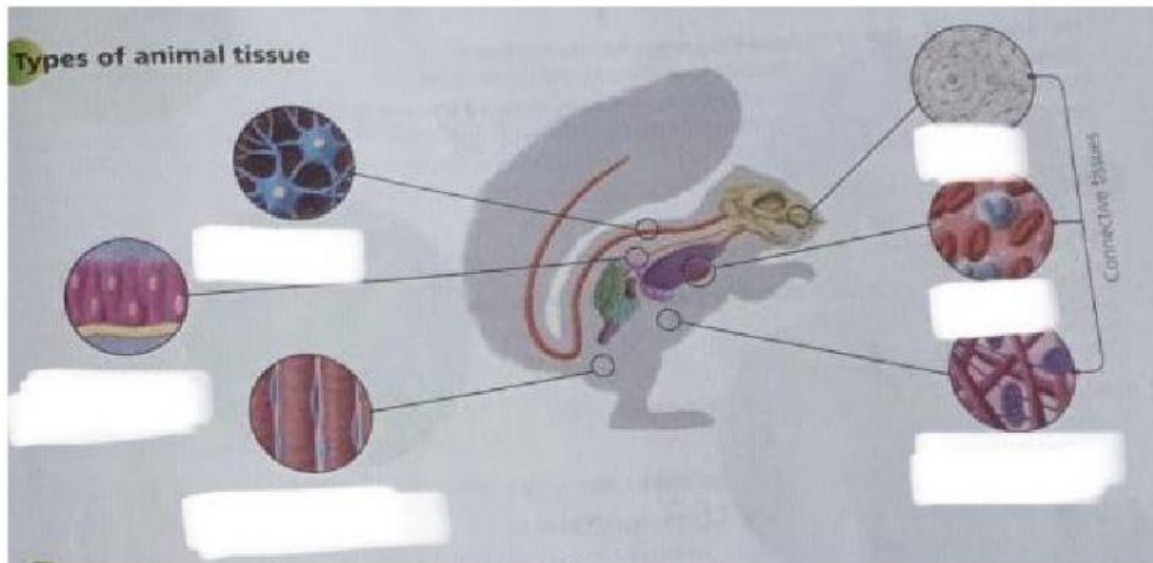
### EXERCISE 3

	MONERA	PROTIST	FUNGUS	PLANT	ANIMAL
nucleus <small>(prokaryotic/eukaryotic)</small>					
cell wall					
organisation <small>(unicellular/multicellular)</small>					
tissue					
organs					

### EXERCISE 4



## EXERCISE 5



## EXERCISE 6

SYSTEM	FUNCTIONS	ORGANS AND PART
nervous		
musculoskeletal		
digestive		
circulatory		
respiratory		