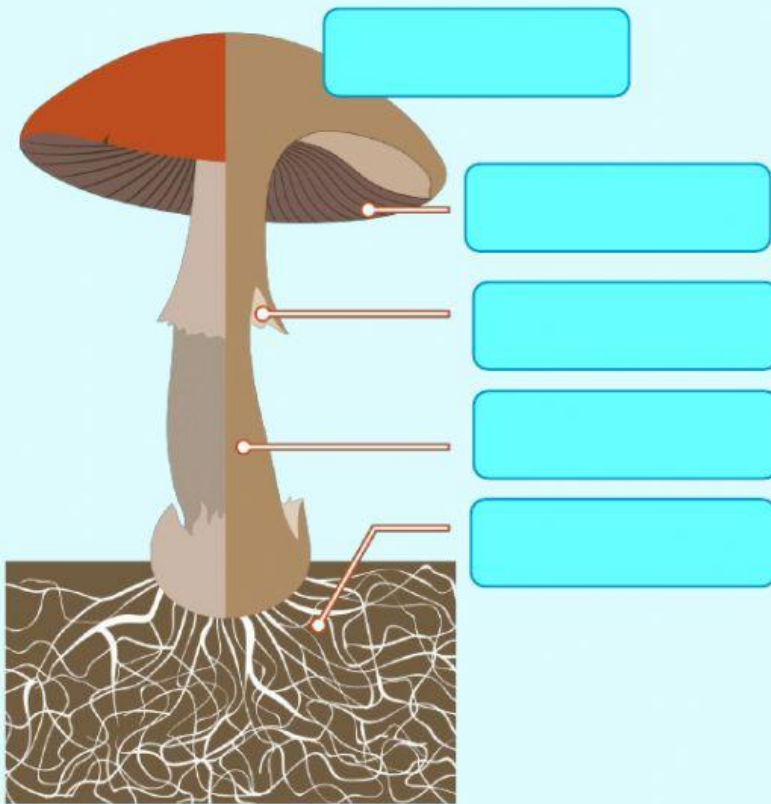


# FUNGI



1.- Label the parts of the fungi.



2.- Are the sentences true or false?

- |   |             |              |
|---|-------------|--------------|
| - Fungi lay eggs.   | <u>TRUE</u> | <u>FALSE</u> |
| - Mushrooms, mould and yeast are examples of fungi.                 | <u>TRUE</u> | <u>FALSE</u> |
| - They are carnivores.  | <u>TRUE</u> | <u>FALSE</u> |
| - Most fungi are multicellular organisms, but some are unicellular. | <u>TRUE</u> | <u>FALSE</u> |
| - Fungi live in the water.  | <u>TRUE</u> | <u>FALSE</u> |
| - The stem is a fungi part.   | <u>TRUE</u> | <u>FALSE</u> |
| - They eat the remains of other living things.                      | <u>TRUE</u> | <u>FALSE</u> |
| - Fungi are living things.  | <u>TRUE</u> | <u>FALSE</u> |