

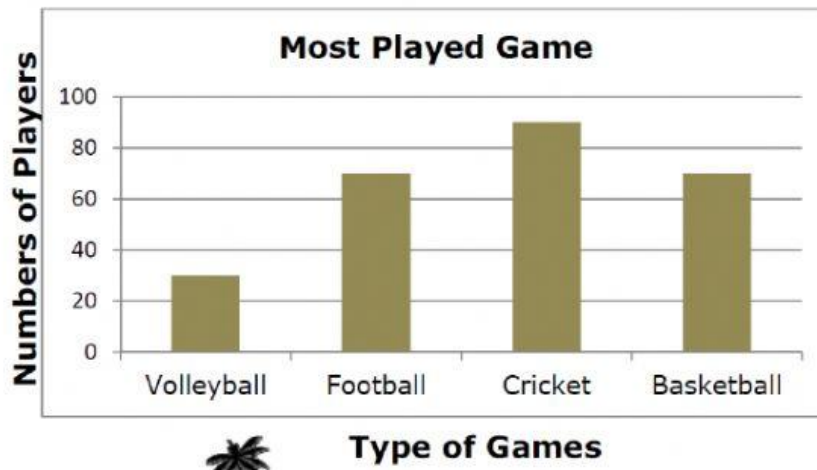


Name: .....

Class: ..... Date: .... / .... / .....

**WORKSHEET – GRADE 4**  
**MATHS – Revision for Midterm Test 2**

**Question 1:** Students were surveyed about their favorite sport to play. This bar chart shows the data of the survey. Study the bar graph and answer the following questions.



a. Which is the most popular game?

**Answer:** .....

b. How many students in total were surveyed?

**Answer:** ..... students

c. Which is the least popular sport?

**Answer:** .....

d. Which two sports are equally as popular?

**Answer:** ..... and .....

**Question 2:** Read the table and circle the question below.

Gifts	2007	2008	2009	2010
Wedding gifts	98	50	41	76
Christmas gifts	87	92	19	46
New year gifts	66	90	64	88
Birthday gifts	64	105	106	99

a. What was the total number of gifts sold in 2007 and 2010?

- A. 315 gifts      B. 309 gifts      C. 624 gifts      D. 6 gifts

b. How many Christmas gifts were sold in 2009?

- A. 230 gifts      B. 244 gifts      C. 19 gifts      D. 65 gifts

c. Which year sold the most gifts?

- A. 2007      B. 2008      C. 2009      D. 2010

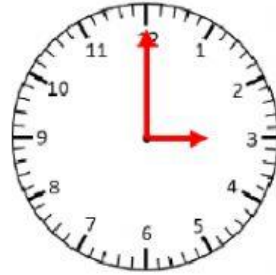
d. Which year sold the fewest gifts?

- A. 2007      B. 2008      C. 2009      D. 2010

**Question 3:** What time is it?



6:30 or six thirty or half past six



\_\_\_\_\_ or \_\_\_\_\_



\_\_\_\_\_ or \_\_\_\_\_



\_\_\_\_\_ or \_\_\_\_\_

**Question 4:** The race took Darryl 2 minutes and 43 seconds. The same race took Yan 170 seconds. Who was faster, Darryl or Yan?

**Answer:** \_\_\_\_\_

**Question 5:** Write the fraction in words. (How to say these fractions)

$\frac{3}{4}$  \_\_\_\_\_

$\frac{1}{5}$  \_\_\_\_\_

$\frac{6}{10}$  \_\_\_\_\_

$\frac{25}{46}$  \_\_\_\_\_

**Question 6:** Given that two fractions are equivalent. Fill in the blanks.

$$\frac{4}{5} = \frac{\dots\dots}{20}$$

$$\frac{5}{7} = \frac{40}{\dots\dots}$$

$$\frac{11}{3} = \frac{\dots\dots}{27}$$