

## HSK 2 Lesson 13 Text 4 (C)

### 13 Matching questions

☐

far (yuǎn)

A. 往

☐

from (cóng)

B. 前面

☐

to go to; to arrive (dào)

C. 再

☐

hotel (bīn guǎn)

D. 远

☐

again (zài)

E. 从

☐

to go (in a direction); to; towards; (of a train)  
bound for; past; previous (wǎng)

F. 往前

☐

away from (lí)

G. 一直

☐

straight; continuously (yìzhí)

H. 走路

☐

to tell (gàosu)

I. 告诉

☐

in front (qián miàn)

J. 路口

☐

forward (wǎng qián)

K. 离

☐

to walk (zǒu lù)

L. 到

M. 宾馆

☐

intersection (lùkǒu)

## 6 True/False questions

Definition

to go to; to arrive (dào)

Term

到

☐ True

☐ False

Definition

straight; continuously (yìzhí)

Term

就到

☐ True

☐ False

Term

离

Definition

away from (lí)

☐ True

☐ False

Term

从

Definition

from (cóng)

☐ True

☐ False

Definition

in front (qián miàn)

Term

前面

☐ True

☐ False

Term

走路

Definition

to tell (gàosu)

☐ True

☐ False

## 6 Multiple choice questions

Definition

far (yuǎn)

- ☐ 远
- ☐ 离
- ☐ 从
- ☐ 再

Definition

again (zài)

- ☐ 再
- ☐ 离
- ☐ 远
- ☐ 从

Term

往

- ☐ forward (wǎng qián)
- ☐ to go (in a direction); to; towards; (of a train) bound for; past; previous (wǎng)
- ☐ again (zài)
- ☐ to go to; to arrive (dào)

Definition

then you have arrived (jiù dào)

- ☐ 前面
- ☐ 一直
- ☐ 就到
- ☐ 到

Definition

Xinjing Hotel (Xīn jīng bīnguǎn)

- ☐ 一直
- ☐ 就到
- ☐ 新京宾馆
- ☐ 宾馆

Definition

forward (wǎng qián)

- ☐ 走路
- ☐ 往前
- ☐ 前面
- ☐ 宾馆

12 of

2. Listen to the audio put the words in right order (by 1,2,3.....) :

【 】 往前	【 】 宾馆	【 】 往	【 】 就到
【 】 路口	【 】 一直	【 】 新京宾馆	【 】 前面
【 】 走路	【 】 离	【 】 从	【 】 告诉
【 】 到	【 】 再	【 】 远	

### Vocabulary expansion

Please translate the below phrase into English:

**宾馆**

一家宾馆

住宾馆



Can you think about an sentence in Chinese to include “宾馆”?

**路口**

十字路口

小路口



Can you think about an sentence in Chinese to include “路口”?

**一直**

一直往前走

一直往后看



Can you think about an sentence in Chinese to include “一直”?

A: 请问，这儿离新宾馆远吗？

B: 不远，走路二十分钟就到。

A: 你能告诉我怎么走吗？

B: 从这儿一直往前走，到了前面的路口再往右走。

**往** - preposition, is often used to indicate direction

Listen to the audio and translate the text into English

**New Words**

- 8. 宾馆 bīnguǎn n. hotel
- \*9. 一直 yìzhí adv. straight, all along
- 10. 往 wǎng prep. to, towards
- 11. 路口 lùkǒu n. crossing, crossroads

Answer the questions in Chinese based on the dialogue above :

1. 去新宾馆要多少分钟？

2. 去新宾馆到了路口怎么走？

## The preposition 往

The preposition “往” is often used to indicate direction.

Please translate the following sentences:

1) 他往后跑 \_\_\_\_\_

2) 你往左看 \_\_\_\_\_

3) 我往右走 \_\_\_\_\_

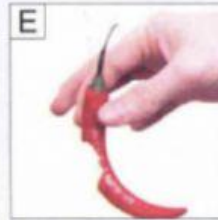
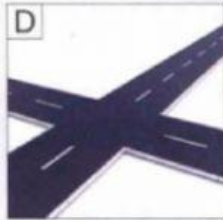
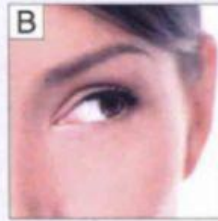
4) 从这儿往前走，就是我们学校。

5) 你看，往左走是医院，往右走是宾馆。

6) 请问，往右走是商店吗？



Match the pictures with the words.



- ① 铅笔 \_\_\_\_\_ ② 手 \_\_\_\_\_ ③ 宾馆 \_\_\_\_\_  
④ 拿 \_\_\_\_\_ ⑤ 眼睛 \_\_\_\_\_ ⑥ 路口 \_\_\_\_\_

Describe the picture using the structural particle “着”,  
e.g.

有两个学生穿着白色的衣服。



- 1) \_\_\_\_\_ (坐着)  
2) \_\_\_\_\_ (笑着)  
3) \_\_\_\_\_ (看着)  
4) \_\_\_\_\_ (说着)  
5) \_\_\_\_\_ (拿着)

Describe the picture including the given words.



他\_\_\_\_\_。(拿)



他\_\_\_\_\_。(穿)



电视\_\_\_\_\_。(开)



他\_\_\_\_\_呢。(开)