

Name: _____ Student no. _____ Class: MEP 1/9

Part 1: Multiple choices

Objective Sc. 3.2 1/4: Explain the components of weather. (Items 1-22)

Instruction: Read each question carefully and select the best answer.

1. Refers to the present state of the atmosphere at a particular place during a short period of time.

- | | |
|------------|------------|
| a. Weather | c. Seasons |
| b. Climate | d. Monsoon |

2. The study of the entire atmosphere is called

- | | |
|----------------|--------------|
| a. Astronomy | c. Geography |
| b. Meteorology | d. Zoology |

3. As a student, how do you use the weather forecast?

- a. It can guide us on what clothes to wear.
- b. Plan for suitable activities in the near future.
- c. We can prepare ourselves and take precautions for any bad weather conditions.
- d. All of the above

4. Which of the following statements about weather forecasting is true?

- I. It can predict bad weather.*
- II. This helps to protect life and property.*
- III. It can help the farmers to predict and plan for crops.*
- IV. Helps in avoiding forest fire.*

- | | |
|--------------------|------------------|
| a. I and IV only | c. I,III,IV only |
| b. II and III only | d. I,II,III,IV |

5. A scientist who studies the causes of weather conditions and also forecast the weather is called.....

- | | |
|----------------|------------------|
| a. Broadcaster | c. Meteorologist |
| b. Newscaster | d. Physiologist |

6. _____ is a measure of the hotness or coldness of the atmosphere.

- | | |
|--------------------|------------------------|
| a. Air temperature | c. Formation of clouds |
| b. Humidity | d. Precipitation |

7. It is defined as the direction the wind is coming from.

- a. Air pressure
- b. Weather
- c. Direction of wind
- d. Wind speed

8. The amount of water vapor in the atmosphere is refers to as

- a. Rain
- b. Lightning
- c. Precipitation
- d. Humidity

9. Describes how fast the air is moving.

- a. Wind speed
- b. Sleet
- c. Clouds
- d. Air pressure

10. _____ is a falling drops of liquid water.

- a. snow
- b. hail
- c. rain
- d. sleet

11. This type of clouds usually produce heavy rain, lightning, and thunder.

- a. Stratus clouds
- b. Cumulonimbus clouds
- c. Cirrus clouds
- d. Cumulus clouds

12. This can be used to measure the air temperature.

- a. Rain gauge
- b. Wind vane
- c. Psychrometer
- d. Thermometer

13. Anemometer is used to

- a. measure the speed of wind
- b. measure relative humidity
- c. tell the direction of wind
- d. All of the above

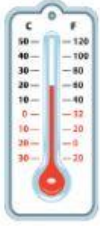

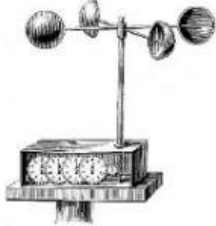

14. Barometer is used to

- a. show the direction of wind
- b. measure atmospheric pressure
- c. measure the amount of rain
- d. measure the thickness of the clouds

15. Precipitation is

- a. made up of tiny water droplets floating in the atmosphere.
- b. defined as the direction the wind is coming from
- c. the amount of force exerted by the weight of the air
- d. any moisture that falls from the air to the ground.

Instruction: Identify the names of the following weather instruments. Select your answer from the box below. (Items 16-19)

a. Barometer	b. Anemometer	c. Wind vane	d. Thermometer
16. 	17. 	18. 	19. 
_____	_____	_____	_____

Instruction: Look at the pictures and match with the statements below about the importance of weather forecasting. (Items 20-22)

a. 	b. 	c. 
--	--	--

20. It can guide us on what clothes to wear. _____
21. It can help the farmers to predict and plan for crops. _____
22. It can predict bad weather. This helps to protect life and property. _____

Objective: Sc. 3.2 1/1: Explain the components and the division of atmospheric layers covering the Earth's surface. (Items 23-28)

Instruction: Read each question carefully and select the best answer.

23. _____ reflects radio frequency.

- | | |
|---------------|---------------|
| a. Ionosphere | c. Atmosphere |
| b. Ozone | d. Exosphere |

24. It is the layer where we live in and where all the weather occurs.

- a. Mesosphere
- b. Thermosphere
- c. Troposphere
- d. Stratosphere

25. _____ absorbs ultraviolet rays from the sun.

- a. Meteors
- b. Ozone
- c. Heat wave
- d. Aurora Polaris

26. It is the outermost layer of the Earth's atmosphere.

- a. Stratosphere
- b. Mesosphere
- c. Ionosphere
- d. Exosphere

27. Meteors burn up in which layer?

- a. Mesosphere
- b. Thermosphere
- c. Stratosphere
- d. Troposphere

28. Aurora Polaris or Northern sky is found in the.....

- a. Exosphere
- b. Ionosphere
- c. Thermosphere
- d. Stratosphere

Part 2: Writing

Objective Sc. 3.2 1/4: Explain the components of weather. (Items 29-31)

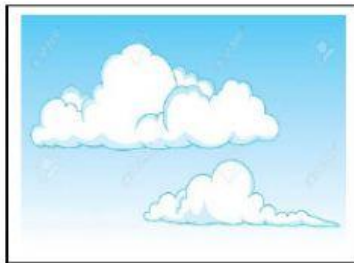
Instruction: Arrange the scrambled words to identify the name of the clouds.

Items 29-31.



(surirc)

29. _____



(sulcumu)

30. _____



(buslocunimmu)

31. _____

Instruction: Name the types of precipitation.

Items 32-35.



32. _____



33. _____



34. _____



35. _____

Objective: Sc. 3.2 1/1: Explain the components and the division of atmospheric layers covering the Earth's surface. (Items 36-40)

Instruction: Identify the layers of the Earth's Atmosphere.

