



Name: ( )	Class:	Date:
Parent's Signature:	Results: /60	%

### Section A

1. Blood vessels are tubes through which blood flows. Name the different types of blood vessels shown below.



A



B



C

	A	B	C
1)	Vein	Artery	Capillary
2)	Artery	Capillary	Vein
3)	Capillary	Vein	Artery
4)	Capillary	Artery	Vein

( )

2. Which of the following statements about how substances are transported in humans and plants are **incorrect**?

- A Humans have a heart to pump substances while plants do not.
- B Both humans and plants have special tubes to transport substances.
- C Sugars and water are transported by different tubes in both plants and humans.
- D There is one type of blood vessels in humans and two types of tubes in plants to transport substances.

1) A and B only

2) B and D only

3) C and D only

4) B, C and D only

( )

3. Why is a leaf cell able to carry out photosynthesis?

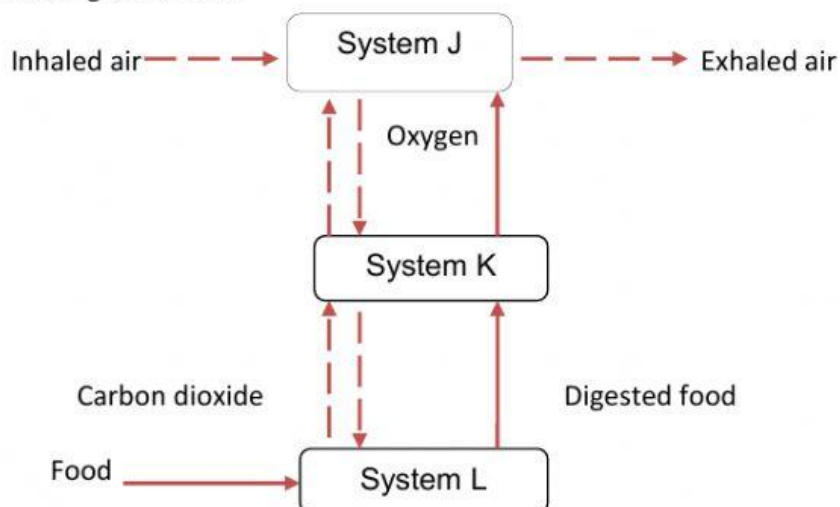
- 1) It contains chlorophyll that stores water for making food.
- 2) It contains chlorophyll that traps oxygen for making food.
- 3) It contains chlorophyll that traps sunlight for making food.
- 4) It contains chlorophyll that traps carbon dioxide for making food.

( )





4. Study the diagram below.



Identify the organ system J, K and L.

	System J	System K	System L
1)	Digestive	Circulatory	Respiratory
2)	Circulatory	Digestive	Respiratory
3)	Respiratory	Digestive	Circulatory
4)	Respiratory	Circulatory	Digestive

( )

5. What are the changes in the states of water during evaporation and condensation?

	Evaporation	Condensation
1)	Solid -> Liquid state	Liquid state -> Gaseous state
2)	Gaseous state -> Liquid state	Liquid state -> Solid state
3)	Liquid state -> Gaseous state	Gaseous state -> Liquid state
4)	Gaseous state -> Liquid state	Liquid state -> Gaseous state

( )

6. Study the process shown below.



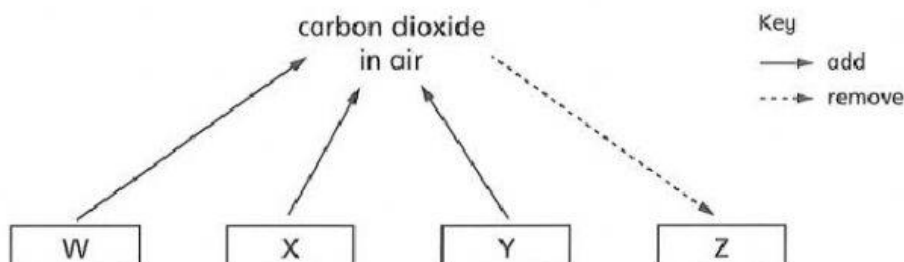


What is the process shown? Where does it occur?

	Process	Place where process occurs
1)	Pollination	Inside a female human body
2)	Fertilisation	Inside a female human body
3)	Pollination	Outside a female human body
4)	Fertilisation	Outside a female human body

( )

7. The diagram shows how carbon dioxide can be removed from or added into the air around us.



Which is correct?

	W	Z
1.	Respiration	Burning
2.	Decomposition	Respiration
3.	Respiration	Photosynthesis
4.	Photosynthesis	Decomposition

( )

8. Which is the difference between photosynthesis and respiration?

	Photosynthesis	Respiration
1)	Takes in oxygen	Gives off oxygen
2)	Gives off carbon dioxide	Takes in carbon dioxide
3)	Makes food	Uses food
4)	Produces energy	Takes in energy

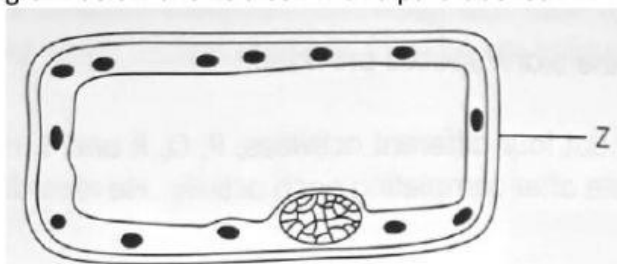
( )





## Section B

1. The diagram below shows a cell with a part labelled Z.



- a) Write down **ONE** function of part Z.

\_\_\_\_\_

- b) If the cell is placed in a red liquid container, can the red color of the liquid enter the Cell through part Z?

Why?

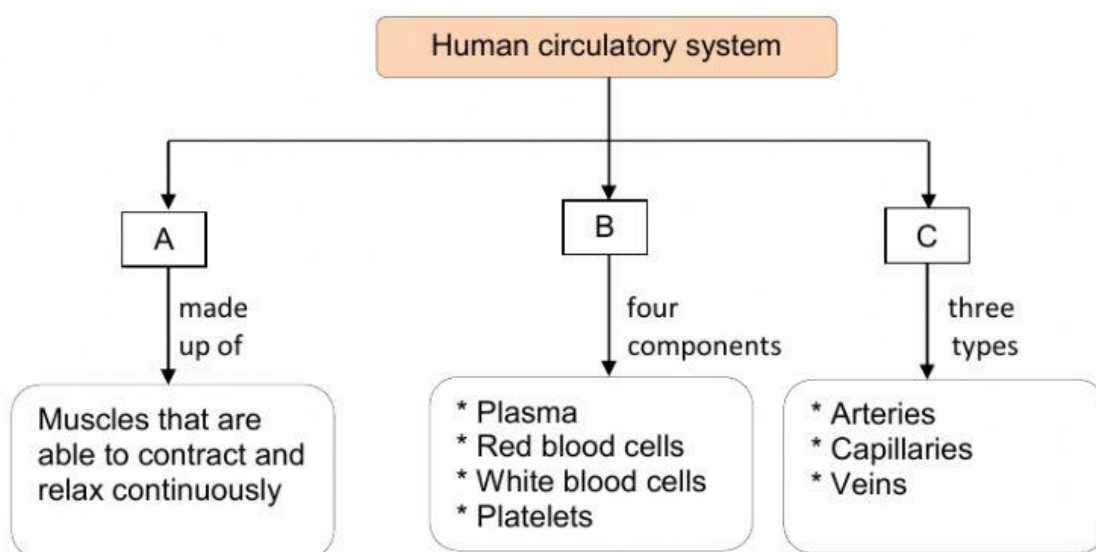
\_\_\_\_\_

- c) Is the cell likely to be an animal cell or a plant cell? Explain your answer.

\_\_\_\_\_

Because \_\_\_\_\_

2. Study the diagram below.



- a) What is the function of part A?





---

b) Which component of part B transports oxygen?

---

\*\*\*\*\* End of paper \*\*\*\*\*

