

**NAME:**

**1. Say what is being described:**

They are like tiny balloons that exchange oxygen and carbon dioxide in the lungs.	
Men and women have one. It is a tube used to expel urine out of the body.	
It is a muscle that opens and closes the bladder's exit.	
The cells that filter blood in the kidneys are called...	
It is a part of the digestive system. It is a narrow tube about 7 metres long with glands in the walls.	
It is as big as a fist. It has got 4 chambers.	
It is a thick and red liquid that runs through our vessels. There are 8 types of it.	

**2. Read the ingredients of these products and say if they are healthy or unhealthy. Explain why.**



**Ingredientes:** leche fresca pasteurizada (98%), leche en polvo desnatada y fermentos lácticos.

**It is healthy / unhealthy.**

**Because** \_\_\_\_\_

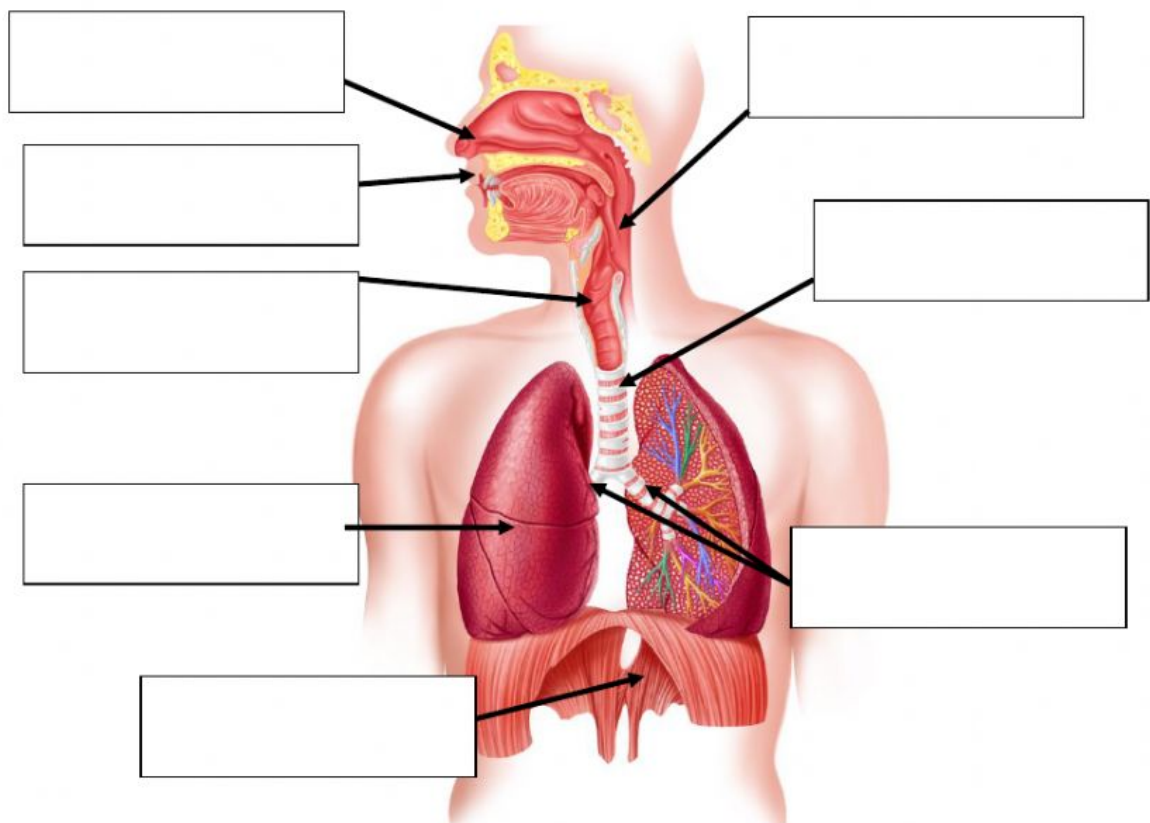
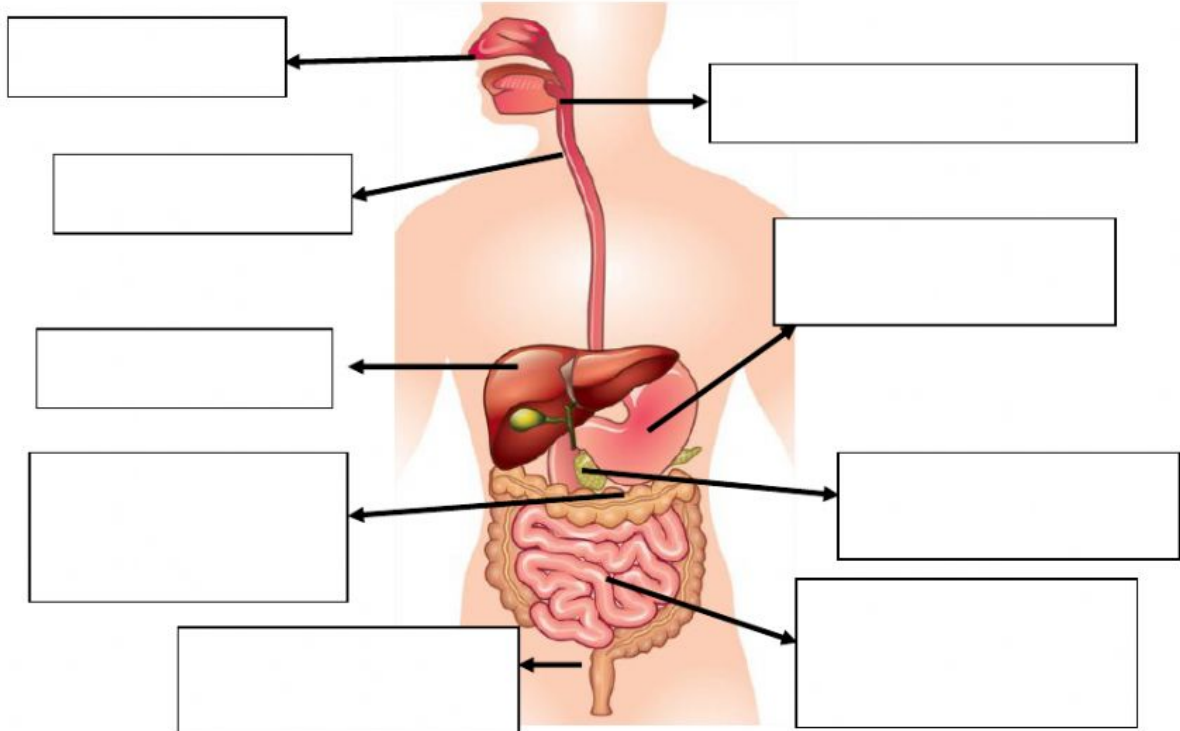


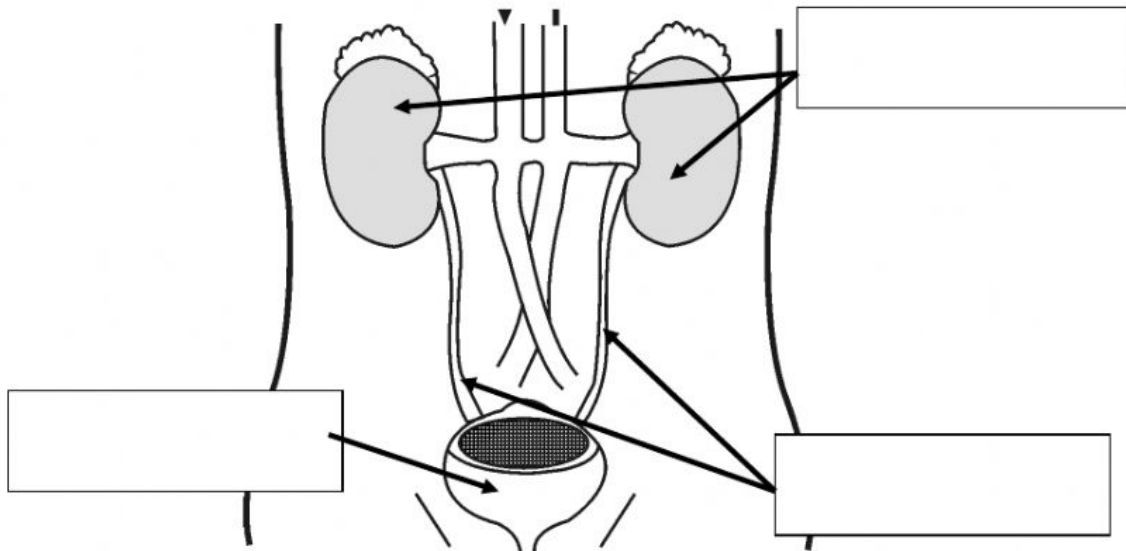
**Ingredientes:** tomates (145g por 100g de tomate frito), aceite de girasol (sofrito con cebollas y ajos frescos), almidón modificado de maíz, azúcar y sal.

**It is healthy / unhealthy.**

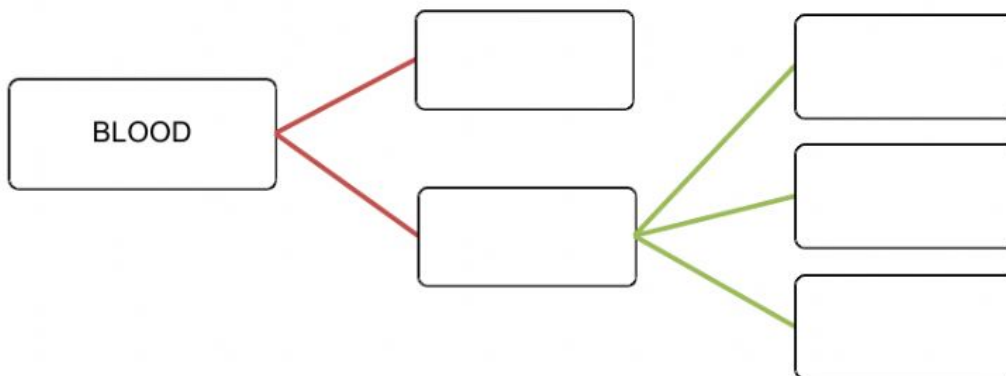
**Because** \_\_\_\_\_

3. Write the name of the parts of these systems:





**4. Complete the components of blood:**



**5. Complete this text with the words in the box. There are some extra words.**

heart	oxygen	carbon dioxide	nutrients
veins	arteries	narrow	waste products
cells	brain	blood	pump

\_\_\_\_\_ carry blood from the \_\_\_\_\_ to the capillaries of our body. In the capillaries, \_\_\_\_\_ and oxygen pass through the walls into the \_\_\_\_\_.

The walls of the capillaries are so thin that they easily allow the substances to go through them. \_\_\_\_\_ and other waste substances pass from the cells into the circulatory system. Then, the \_\_\_\_\_ carry blood from the capillaries to the heart.