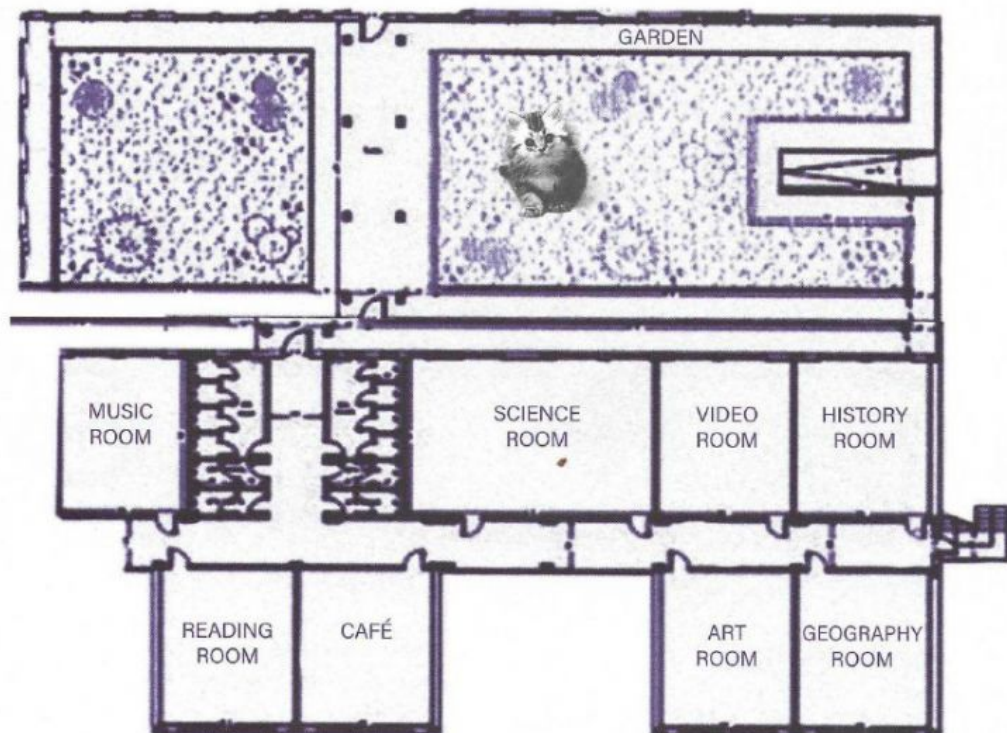


LIBRARY MAP

TEST 1
Task 1

Look at the library map. Read and complete the sentences (1-6). Write your answers on the right column.
The first one (0) is an example.



0	Paul is having an ice-cream in the ...	Café
Q1	Joe is looking at a map in the...	
Q2	Mary is drawing a picture in the...	
Q3	Mark is listening to a CD in the...	
Q4	Susan is watching a film in the...	
Q5	Julie is playing with a cat in the...	
Q6	Luke is reading about experiments in the...	



READING

TEST 1 Task 2

Read the park notices (A-G) and match them with the sentences (1-5) There is one letter you do not need. Write your answers in the boxes.

The first one (0) is an example.

A



B



C



D



E



F



G



0	You must follow the rules	C
Q1	You can't smoke	
Q2	You can't bring your dog	
Q3	You can eat ice cream	
Q4	You throw your rubbish here	
Q5	You can ask for information here	



CHESSINGTON WORLD OF ADVENTURESTEST 1
Task 3

Read the text about Chessington World of Adventures. Choose the correct answer (A, B, C or D) for questions 1-5. Put a cross (X) in the correct box. Only one answer is correct. The first one (0) is an example.



Chessington World of Adventures is an adventure park and a zoo in England. It is one of the biggest adventure parks in the country.

It has more than 40 rides and attractions for all the family. You can have fun on the Scorpion Express, a train running through an abandoned town where scorpions live. And if you want to see the animals in the zoo, catch the Jungle Bus, a 'flying bus' that will take you high above the park.

For some rides you must be with an adult.

Opening times – from the beginning of March to the end of October – from 10 am to 5 pm

Tickets – Adults (aged 12 +) £50.00

Children (aged 3-11) £30.00



0. Chessington World of Adventures is in

- ☐ Wales
- ☐ Scotland
- ☒ England
- ☐ Ireland

Q1. The park has more than..... rides

- A. fourteen
- B. forty
- C. fifty
- D. fifteen

Q2. The Scorpion Express is a..

- A. train
- B. plane
- C. tram
- D. boat

Q3. What is the name of the "flying bus"?

- A. Snake Bus
- B. Jungle Bus
- C. Scorpion Bus
- D. School Bus

Q4. The park is closed from...

- A. the end of March
- B. the beginnig of October
- C. the end of October
- D. the beginning of March

Q5. An adult ticket costs....

- A. £ 30.00
- B. £ 50.00
- C. £ 13.00
- D. £ 15.00