

Listening

SECTION 1 Questions 1-10

Questions 1-3

Complete the form below.

Write **NO MORE THAN TWO WORDS AND/OR A NUMBER** for each answer.

Cianfanelli Property Loss/Damage Report Form	
Example Name	AnswerCirilla Fiona....
Phone number	1.
Address	2., Toussaint
Shipping company	EA Merchant Marine
Date of arrival	3.
Shipment code	GTX-1060

Questions 4-10

Complete the table below.

Write **NO MORE THAN TWO WORDS AND/OR A NUMBER** for each answer.

Items	Problems	Estimated cost
4.	a lot of 5. are missing	\$40
Violin	a huge crack on the body the 6. is detached	no less than 7.
8.	broken 9.	\$30
Electric pressure cooker	the 10. needs replacing	unknown

SECTION 2 Questions 11-20

Questions 11-15

Complete the notes below.

Write **NO MORE THAN TWO WORDS** for each answer.

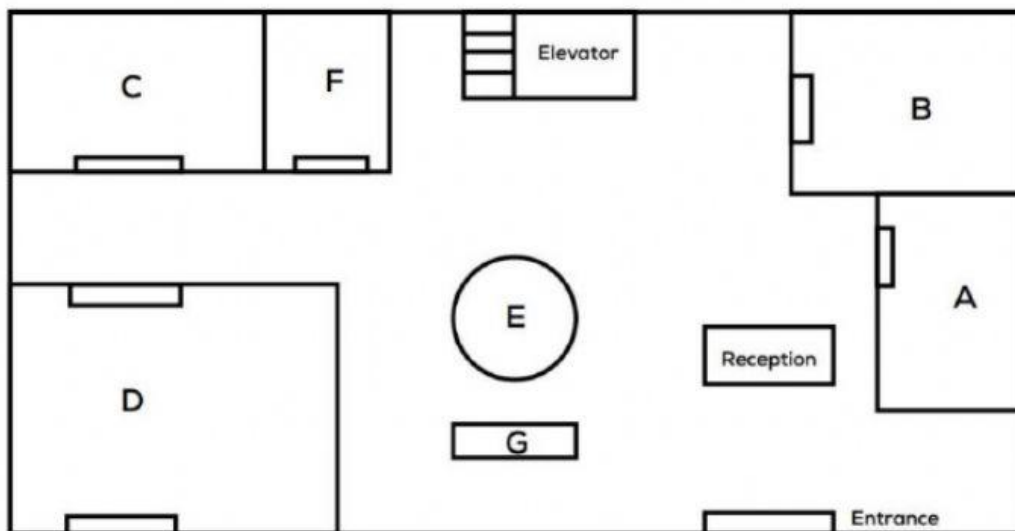
KINNEY HOTEL
Located in the town centre, near the 11
Rated 4-star by a 12
The most luxurious and expensive room in the hotel is the 13
Has a restaurant specialising in Norwegian 14 on ground floor
Has a special 15 on the 15 th floor

Questions 16 - 20

Label the plan below.

Write the correct letter **A - G**, next to Questions 16 - 20.

GROUND FLOOR OF KINNEY HOTEL



- 16. Art gallery
- 17. Fountain
- 18. Restaurant
- 19. Bakery
- 20. Bar

SECTION 3 Questions 21-30

Questions 21-26

Complete the notes below.

Write **NO MORE THAN TWO WORDS AND/OR A NUMBER** for each answer.

THE LIFE AND WORK OF LOUIS BRAILLE

Childhood

- Louis Braille (1809 – 1852) was born in a family which ran a successful leather making business.
- At the age of 3, Louis Braille accidentally poked his eye in his father's workbench and lost his vision due to **21**.

Early education

- Local teachers were very impressed by Louis' **22** and intelligence.
- In 1819, Braille attended the Royal Institute for Blind Youth.

Major limitations of Valentin Haüy's system

- The handcrafted books were **23** and
- The method itself did not help children learn how to write.

Charles Barbier's system

- Was expected to be used as a means for **24** to communicate silently at night without a light source.
- Used thirty-six **25** that represented sounds rather than individual alphabet letters.

Louis Braille's system

- Has 63 possible **26** of dots.
- Users write by punching dots into paper from right to left.

Questions 27-30

Write the correct answer, **A-F**, next to Questions **27-30**.

What was the most remarkable achievement that each of the following blind scientists had achieved?

- A. invented an automotive feature that improves drivers' safety
- B. developed his own reading method based on the Braille system
- C. had a system similar to Braille's under his name
- D. created a weapon that led to the success of many battles fought by his home country
- E. his invention had a huge impact on ocean exploration
- F. discovered production and shipping methods that served military purposes

27. Dr. James Gale

28. William Moon

29. Ralph Teetor

30. Mohannad Abudayyah

SECTION 4 Questions 31-40

Complete the note below.

Write **ONE WORD ONLY** for each answer.

3 UNSOLVED MYSTERIES THAT CONFOUNDED THE ART WORLD

Artwork	Facts
The In-The-Garden painting	<ul style="list-style-type: none"> • The painting was concealed under another painting. • The hidden painting was a portrait of a young lady who was reading and enjoying her afternoon 31 • The artist was thought to be a 32 before the Depression. • It was speculated that making the second painting over the first one was how the artist managed to 33 or store his paintings.
Christ of Patience statue	<ul style="list-style-type: none"> • The statue was found to have real human teeth. • It was supposed that certain human parts had been donated according to a 34 tradition. • The human teeth from the statue were revealed by 35 • More interestingly, the teeth are not 36 until people look at the inside part on purpose. • Researchers are on an attempt to identify the donor's age and 37
Mona Lisa-the other ones	<ul style="list-style-type: none"> • The second Mona Lisa painting was made with a difference in 38 compared to the original one. • The third Mona Lisa (Isleworth Mona Lisa) had been painted around 100 years prior to the other two. • With different material used for the painting, it is still a question regarding whether Da Vinci wanted to employ a new 39 or it was the work of another creator. • The two paintings have sparked ongoing 40 among experts.