

1. Despliega las pestañas y elige la opción correcta

A musical staff in treble clef with a double bar line at the end. Above the staff are four empty rectangular boxes with green borders. Below the staff are five empty rectangular boxes with pink borders. Arrows point from the boxes above to the staff: the first points to the first space (F), the second to the first line (G), the third to the second space (A), and the fourth to the second line (B). Arrows point from the boxes below to the staff: the first points to the first space (F), the second to the first line (G), the third to the second space (A), the fourth to the second line (B), and the fifth to the third space (C).

2. ¿Cómo se llaman estas notas?

A musical staff in treble clef with a whole note on the first space (F). Below the staff is a yellow rectangular box.

A musical staff in treble clef with a whole note on the first line (G). Below the staff is a yellow rectangular box.

A musical staff in treble clef with a whole note on the second space (A). Below the staff is a yellow rectangular box.

A musical staff in treble clef with a whole note on the second line (B). Below the staff is a purple rectangular box.

A musical staff in treble clef with a whole note on the third space (C). Below the staff is a purple rectangular box.

A musical staff in treble clef with a whole note on the third line (D). Below the staff is a purple rectangular box.

A musical staff in treble clef with a whole note on the fourth space (E). Below the staff is a light blue rectangular box.

A musical staff in treble clef with a whole note on the fourth line (F). Below the staff is a light blue rectangular box.

A musical staff in treble clef with a whole note on the fifth line (G). Below the staff is a light blue rectangular box.

3. Dibuja en el pentagrama la nota correcta



DO



MI



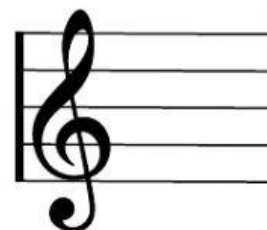
SOL



MI



DO



SOL



SOL



MI



DO