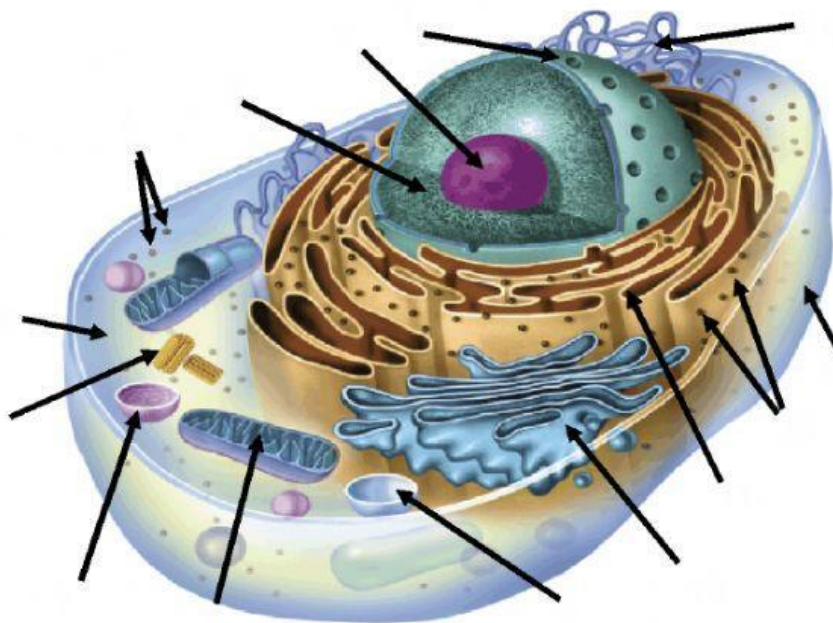
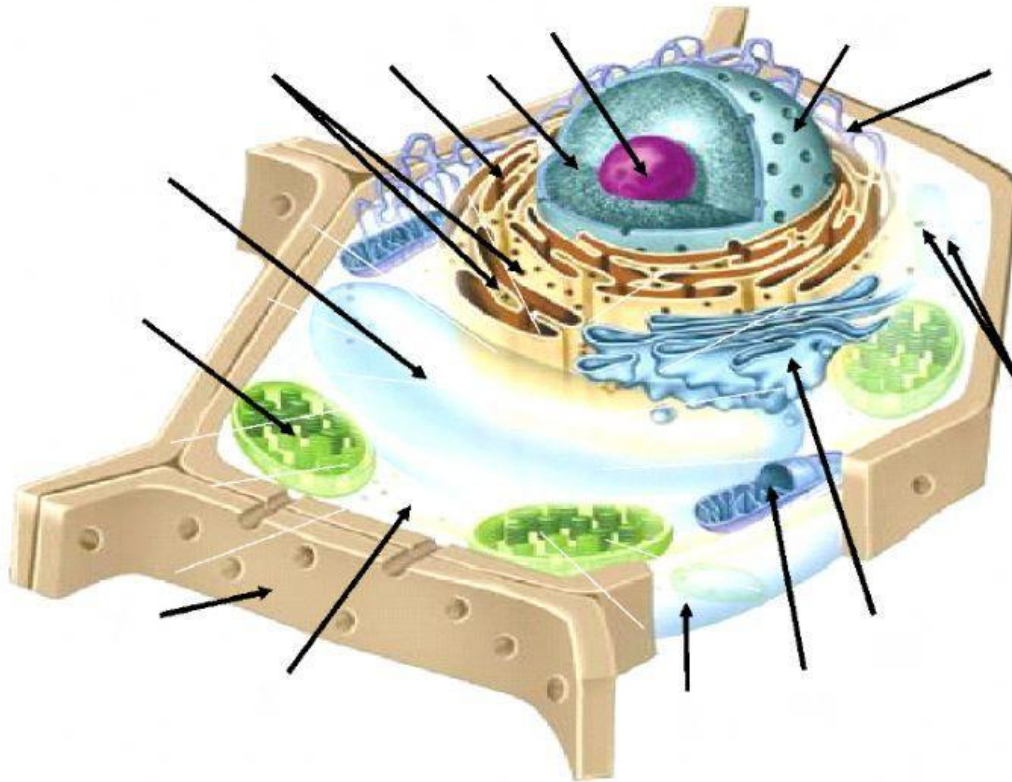


Cell Structures and Functions...



Drag and Drop the proper terms

Ribosomes (free)	Nucleus	Nuclear Envelope (nuclear membrane)	Nucleolus	Chromatin
Mitochondria	Lysosome	Golgi Apparatus	Rough Endoplasmic Reticulum	Smooth Endoplasmic Reticulum
Vacuole	Centriole	Ribosomes (attached)	Cytoplasm	Cell Membrane (plasma membrane)



Drag and Drop the proper terms

Ribosomes (free)	Nucleus	Nuclear Envelope (nuclear membrane)	Nucleolus	Chromatin
Mitochondria	Cell Wall	Golgi Apparatus	Rough Endoplasmic Reticulum	Smooth Endoplasmic Reticulum
Vacuole	Chloroplast	Ribosomes (attached)	Cytoplasm	Cell Membrane (plasma membrane)

	Term	Definition/Function
1		Tiny cell structure; “mini organ”
2		Thin, flexible envelope that surrounds a cell
3		Cells with nucleus, surrounded by its own membrane and has internal organelles.
4		Theory that states all living things are made of cells, cells are the basic building blocks of life, and that living things come from other living things
5		Cell structure that directs all activities of the cell; contains all the genetic information of the cell
6		Large sac in the cytoplasm that stores water, food, enzymes, and minerals for the cell. Large in plants and smaller in animals.
7		Cells lacking a nucleus and most other organelles; the first cells
8		Large, irregular shaped structure that contains the green pigment, chlorophyll: food making structure in plant cells; site of photosynthesis
9		Rod-shaped structure that is referred to as the powerhouse of the cell; site where cellular respiration occurs; energy production site
10		Small, round structure involved in the digestive activities of a cell
11		Tiny grain sized organelle made of RNA and attached to the surface of some endoplasmic reticulum and scattered through the cytoplasm; a protein making factory of the cell
12		Tubular passageway involved in the transportation of proteins. There are two kinds, rough and smooth.
13		Outermost boundary of a plant cell, made of cellulose
14		All the living material between the nucleus and cell membrane; jelly-like substance.
15		cell organelle that helps process and package proteins and lipid molecules, especially proteins destined to be exported from the cell.

Match terms to functions or definitions above

Prokaryotic Cell	Cell Membrane	Cell Wall	Cytoplasm	Endoplasmic Reticulum
Vacuole	Lysosome	Ribosomes	Chloroplast	Nucleus
Eukaryotic Cell	Cell Theory	Organelle	Mitochondria	Golgi Apparatus