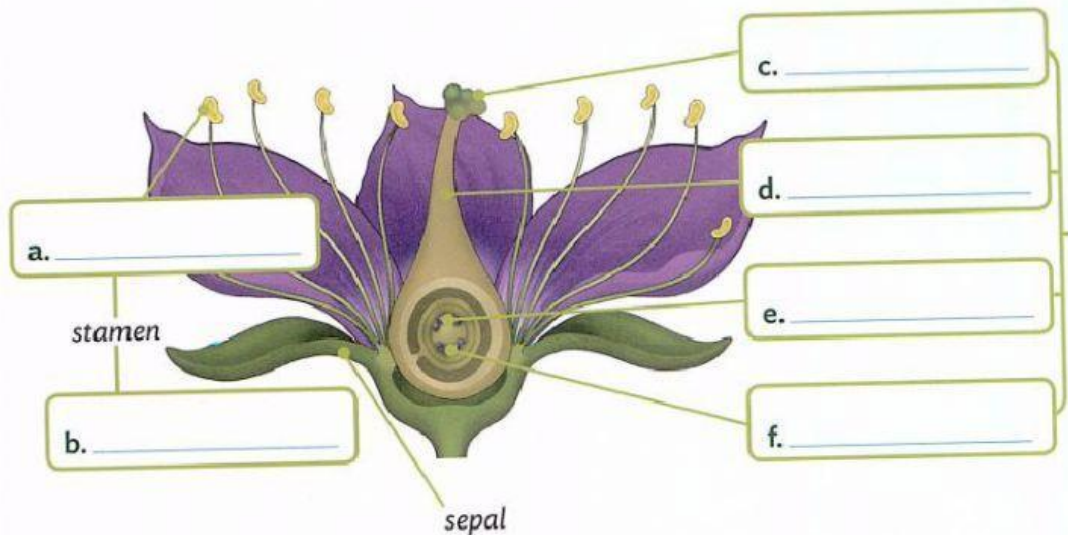


Angiosperm reproduction

1. Complete the missing part of the flower.



2. Read and choose the correct option.

- a. The stamen is the **male** / **female** reproductive part of the flower.
- b. The pistil is the **male** / **female** reproductive part of the flower.

3. Match the stages of the angiosperm reproductive cycle to the descriptions.

Fertilization	The ovary develops into a fruit with seeds
Seed dispersal	The plant produces flowers
Germination	A grain of pollen reaches an ovule in the ovary
Fruit development	The seeds are dispersed by animals, the wind or water
Flowering	A new plant grows from a seed.
Pollination	Pollen travels from the anther to the stigma of the same or another flower.