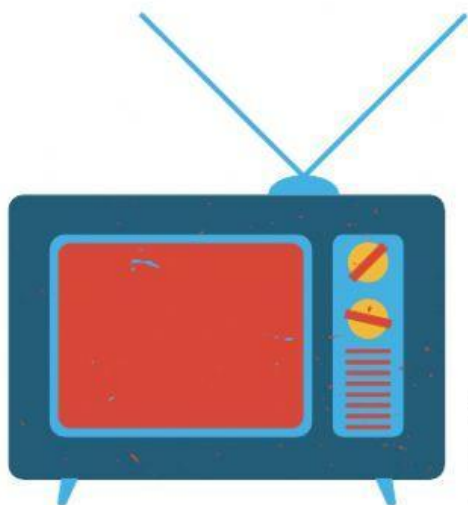


I'LL BE THERE FOR YOU

by The Rembrandts

(Theme Song from **F.R.I.E.N.D.S**)



1. CHOOSE THE CORRECT OPTION.

So no one told you wife/life was gonna be this way
Your job's a joke/broke, you're broke/a joke
Your love life's door-away/DOA
It's like you're always stuck in second gear/beer
When it has/hasn't been your day, your week, your month
Or even your gear/year, but

2. MATCH THE BEGINNING OF THE PHRASE WITH ITS CORRECT ENDING.

Chorus:

- | | |
|--------------------------|-------------------------------------|
| 1. I'll be there for you | a. (Like I've been there before) |
| 2. I'll be there for you | b. ('Cause you're there for me too) |
| 3. I'll be there for you | c. (When the rain starts to pour) |

3. COMPLETE THE MISSING WORDS.

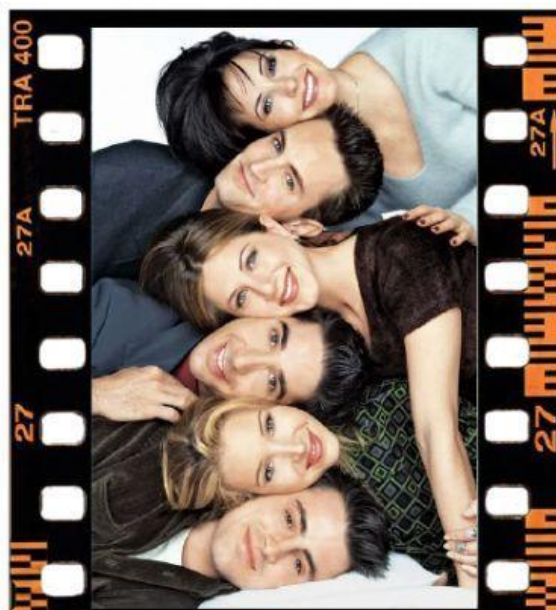
You're still in bed at _ _ _
And work _ _ _ _ _ at eight
You've _ _ _ _ _ your _ _ _ _ _
So far, _ _ _ _ _ are going great
Your mother _ _ _ _ _ you there'd be days like _ _ _ _ _
But she didn't tell you when the world has _ _ _ _ _
You down to your _ _ _ _ _ that... (Chorus)

4. PLACE THE WORDS IN THE CORRECT GAP.

see face laugh through seems

No one could ever know me
No one could ever _____ me
_____ you're the only one who knows
What it's like to be me
Someone to _____ the day with
Make it _____ all the rest with
Someone I'll always _____ with
Even at my worst, I'm best with you, yeah

Chorus x2



I tried to convince my mom that I hadn't stayed up all night but she told me that she heard me clapping along to the friends theme song every twenty minutes

