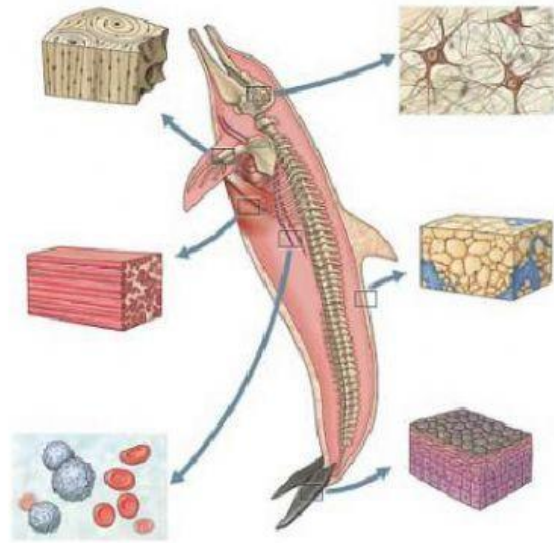


ANIMAL AND PLANT TISSUES

Match the definition to the correct animal tissue

- 1 This tissue consists of bone cells. It forms bones.
- 2 This tissue consists of epithelial cells. It forms the skin.
- 3 This tissue is made up of neurons. It carries information to the brain and responds to the rest of the body.
- 4 This tissue is made up of blood cells. It carries substances throughout the body.
- 5 This tissue consists of fat cells. It is specialized in storing fat.
- 6 This tissue is made up of muscle cells. It is responsible for movement.

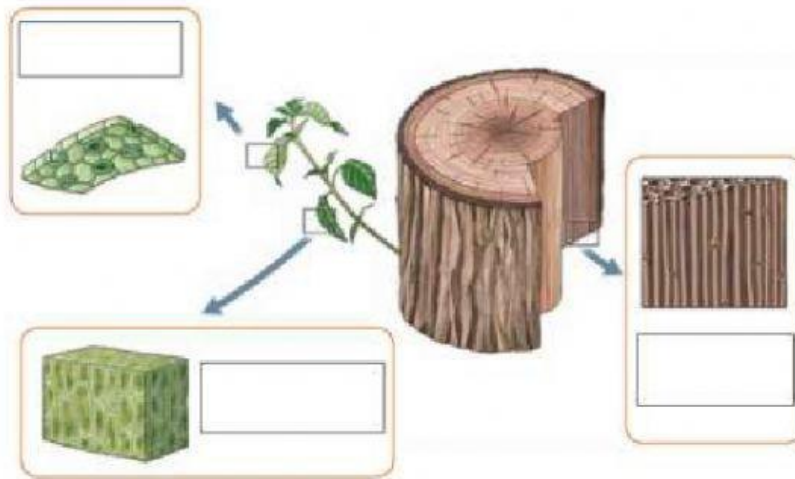


Label the plant tissues

ground tissue

dermal tissue

vascular tissue



Complete the sentences with the correct plant tissue

ground tissue

dermal tissue

vascular tissue

It provides protection for the plant. _____

It provides support and performs photosynthesis. _____

It is responsible for transporting substances. _____