

CARIBBEAN EXAMINATION COUNCIL
CARIBBEAN PRIMARY EXIT ASSESSMENT
SCIENCE

READ THE FOLLOWING INSTRUCTIONS CAREFULLY.

1. This examination has **50** questions. You have 1 hour 15 minutes to answer them.
2. Each question has three possible answers: (A), (B), and (C). Read each question carefully then choose the correct answer.
3. On your answer sheet, find the number that matches the question you intend to answer.
4. Shade the circle which has the same letter A, B, or C next to the answer you have chosen.

Sample Question

Which part of the flower contains the pollen grains?

- (A) Style
- (B) Ovary
- (C) Anther

Sample Answer



The correct answer is “Anther”, so (C) has been shaded.

5. If you want to change your answer, erase it completely before you fill in your new choice.
6. When the supervisor tells you to begin, turn the page and work as quickly and as carefully as you can.
7. If you try a question and find that you cannot answer it, leave it and go on to the next one.

You may return to that question later.
8. The answer sheet has more spaces than there are questions on this test. Do NOT shade any of the extra spaces.

DO NOT TURN THIS PAGE UNTIL YOU ARE TOLD TO DO SO.



1. Sam observes dark, low clouds in the sky. He can conclude that the weather will be

- (A) sunny
- (B) rainy
- (C) windy

2. The amount of water vapour which is present in the atmosphere is called

- (A) moisture
- (B) humidity
- (C) temperature

3. Donna observes that the water level in her fish tank has fallen. The change is due to

- (A) evaporation
- (B) conservation
- (C) condensation

4. Which of the following types of soil retains the greatest amount of water?

- (A) Clay
- (B) Sand
- (C) Loam

5. Which of the following materials should be added to a poor soil type to make it better for growing crops?

- (A) Clay
- (B) Sand
- (C) Humus

6. Which of the following is an example of a NON-REVERSIBLE change?

- (A) Burning
- (B) Freezing
- (C) Condensation



7. When water vapour rises into the atmosphere, it condenses. The condensed moisture is known as

- (A) rain
- (B) snow
- (C) clouds

8. The movement of soil particles, by the wind, from an area with no vegetation to another area is called soil

- (A) erosion
- (B) engineering
- (C) landscaping

9. The rocks found in a volcanic region are MOST likely

- (A) igneous
- (B) metamorphic
- (C) sedimentary

10. After a bush fire, replanting trees on a hillside will

- (A) increase flooding
- (B) prevent soil erosion
- (C) encourage soil erosion

11. The sun does NOT provide the earth with

- (A) light
- (B) heat
- (C) oxygen

12. George wanted to get a closer look at the moon. He used a

- (A) telescope
- (B) periscope
- (C) microscope



13. Which of the following statements describes the movement of the sun, earth and moon?

- (A) The sun and the moon revolve around the earth.
- (B) The sun revolves around the moon; the moon revolves around the earth.
- (C) The moon revolves around the earth; the earth revolves around the sun.

14. Three things that produce light are

- (A) sun, stars, fire
- (B) sun, mirror, tin
- (C) sun, moon, stars

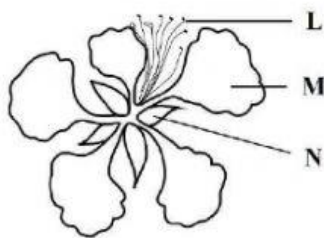
15. In which of the following conditions will tomato seeds germinate fastest?

- (A) Dry cotton wool in a container in a refrigerator
- (B) Dry cotton wool in a container in a cupboard
- (C) Wet cotton wool in a container in a cupboard

16. Seeds found in fleshy fruits are usually dispersed by

- (A) wind
- (B) water
- (C) animals

Question 17 refers to the diagram below which shows the external parts of a flower.

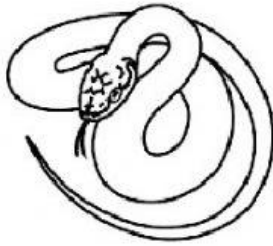


17. Which structure of the flower represents the stamen?

- (A) L
- (B) M
- (C) N



Question 18 refers to the diagrams below.



Snake



Earthworm



Frog

18. Which animal does NOT have a skeleton inside its body?

- (A) Frog
- (B) Snake
- (C) Earthworm

19. Which part of the flower protects it when it is in the bud?

- (A) Petal
- (B) Sepal
- (C) Stamen

Questions 20-22 refer to the following diagram of an open pea pod shown below.



20. Structure Z is used to

- (A) protect the flower
- (B) attract birds and bees
- (C) grow into a new plant

21. From which part of the flower does Structure Y develop?

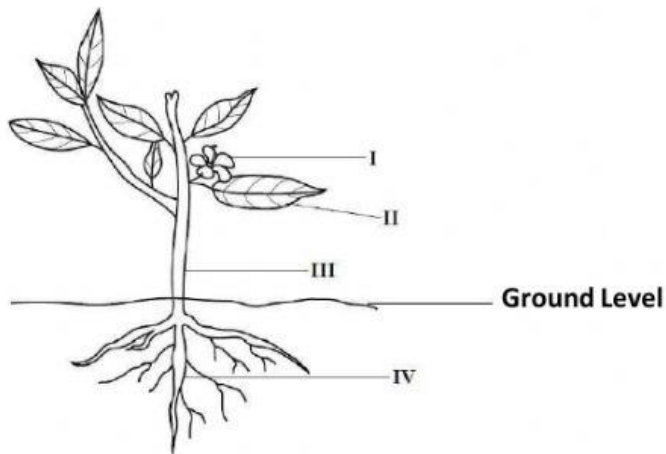
- (A) Petal
- (B) Ovary
- (C) Anther



22. The pea is MOST likely dispersed by

- (A) fire
- (B) water
- (C) explosive action

Questions 23-24 refer to the diagram of a plant.



23. The MAIN function of the structure labelled II is to

- (A) make food
- (B) absorb water
- (C) attract insects

24. Which labelled structures represent the shoot system of the plant?

- (A) I, III, IV
- (B) I, II, III
- (C) II, III, IV

25. Which of the following statements about the roots of plants is FALSE?

- (A) Some roots are good to eat.
- (B) Mango trees have tap roots.
- (C) Plants store water and oxygen in their roots.



26. Which order below correctly describes the life cycle of a butterfly?

- (A) Egg → pupa → larva → adult
- (B) Egg → larva → pupa → adult
- (C) Pupa → larva → egg → adult

27. Ana liked an unusual plant and wanted to get a plant identical to the one she liked. What is the BEST method of propagating this plant?

- (A) Use cuttings
- (B) Make grafts
- (C) Use budding

28. Which of the following systems is responsible for taking gases out of the body?

- (A) Circulatory
- (B) Respiratory
- (C) Reproductive

29. Which of the following words does NOT relate to volcanoes?

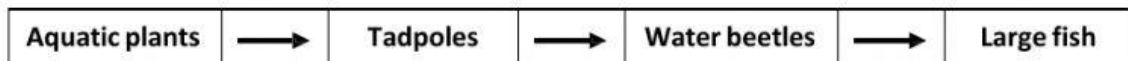
- (A) Lava
- (B) Crater
- (C) Cirrus

30. The MAIN organs of the nervous system are the

- (A) brain, heart, intestine
- (B) brain, spinal cord, nerves
- (C) spinal cord, arteries, veins



Questions 31-32 refer to the diagram of a food chain below.



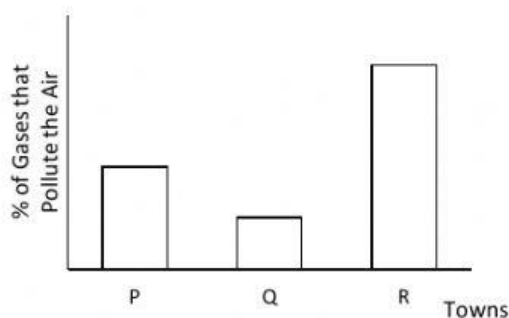
31. Which organism in the food chain is a producer?

- (A) Large fish
- (B) Water beetles
- (C) Aquatic plants

32. If all the tadpoles die, which organisms in the food chain will be directly affected?

- (A) Large fish and water beetles
- (B) Aquatic plants and water beetles
- (C) Aquatic plants and water beetles

Questions 33-35 refer to the graph below which shows the percentage of gases given off by vehicles which pollute the air in three towns, P, Q and R.



33. In Towns P and R a large number of persons are MOST likely to suffer from

- (A) sore throat
- (B) back pain
- (C) breathing difficulties

34. The amount of pollution which is present in Town R may be **decreased** by persons riding

- (A) bicycles
- (B) trains
- (C) motorcycles



35. Which town has the LEAST amount of pollution?

- (A) P
- (B) Q
- (C) R

Question 36 refers to the table below which shows three ways in which Mrs. James plans to dispose of waste materials.

Method	Material	Disposal Method
1	Tree leaves, vegetable peels	Composting
2	Plastic bags, vegetable peels	Recycling
3	Tree leaves, plastic bags	Landfill

36. Which disposal method is MOST appropriate for the materials given?

- (A) 1
- (B) 2
- (C) 3

Questions 37-38 refer to the table below which shows the effects of different materials used in a closed electrical circuit.

Material	Bulb lights up	Bulb does not light up
Cotton		
Plastic		
Copper wire		
Steel		
Wood		

37. Which of the following materials are conductors?

- (A) Cotton and plastic
- (B) Copper wire and steel
- (C) Cotton, plastic and wood

38. Which of the following materials may be used to prevent electrical shock?

- (A) Plastic
- (B) Steel
- (C) Copper wire

